



I 我预测 你高分  
predicting



怕吃苦，不过5

不搞基，五个7

别低头，皇冠会掉  
别放弃，坏人会笑  
过雅思，天自安排

雅思我预测 教主

**第49期**

I 我预测 你高分  
PREDICTING

08:25

我预测5-6月  
**听力技巧预测高分班**

为了提升您的上课体验 强烈建议使用QQ报名

**5月7日开课**

重点适用考试场次: 5月12日 19日 24日 6月2日 7日 23日 30日

**教主**

## 新班变化：非常重要

- 本班**前4次正课（2小时/次）**所讲解篇章 为
- **2018 中国 大陆考试** 和 **亚太区考试**
- **同时**都需要复习的小范围重点篇章



5月7日 (周一)	18:15-20:15	教主—听力预测正课
5月8日 (周二)	18:00-20:00	教主—听力预测正课
5月9日 (周三)	19:00-21:00	听力技巧课
5月10日 (周四)	19:15-21:15	听力技巧课
5月11日 (周五)	17:30-18:30	教主—考前突击课
5月18日 (周五)	17:30-18:30	教主—考前突击课
6月1日 (周五)	17:30-18:30	教主—考前突击课
6月22日 (周五)	17:30-18:30	教主—考前突击课
6月29日 (周五)	17:30-18:30	教主—考前突击课





## 教主私人微信：

- 我预测教主 开通个人预测微信专治各种雅思不过，添加账户 “aiyucejz” - 名曰“我预测教主”；私密无节操，真人秒回。



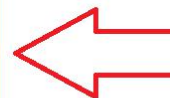
## 【1】电子版（手机app）预测题库



(我预测官网)- 随时随地看预测



苹果app store  
“爱普我预测”  
APP账户注册  
点击进入



## 配套纸质版（印刷）

## 雅思预测题库书籍（适合实力+做题练习）

**I 我预测 你高分 predicting** **正版**



The image shows a stack of IELTS listening prediction books with covers featuring a cityscape and the text 'IELTS 雅思听力机经'. Next to the books is a tablet displaying the 'I predicting' app interface. Below the books are five smaller book covers for IELTS listening materials.

雅思听力预测机经11-16

**¥188**

**I 我预测 你高分 predicting** **正版**



The image shows two IELTS reading prediction books with covers featuring a Ferris wheel and a building, with the text '雅思阅读真题'. Next to the books is a tablet displaying the 'I predicting' app interface.

雅思阅读真题18-33

**¥259**



# 点击交卷，电脑自动检查答案拼写

The houses contain three floors:

37 The lower level and top level are

-shaped

➤ ground floor entrance-

➤ first floor with living room and open kitchen

the medium level is

37 and a study (business)

second floor with two bedrooms and bathroom

37 Top floor which is sometimes used as a small

The cubes are tilted and sit on hexagon-shaped pole structures. The cubes contain the living areas, which are split into three levels. The **triangle-shaped** business

40 房子的居住者 in their one advantage of a convenient  and reasonable price ye with good facilities



40

重新做题

交卷

返回

## 网络班红色小范围12-15套

(不换试卷的澳洲香港等所在亚太区)

听力S4突击A(周二晚上8点开通)

重点顺序 标准重点1 标准重点2 二级准备 三级战备 广告 命中删除 答案 临时试卷

● 查看全部 ● 只看重点

1	2	3	4	5	6	7	8	9	10	11	12	13	14	15	16	17	18	19	20	21	22	23	24
25	26	27	28	29	30	31	32	33	34	35	36	37	38	39	40	41	42	43	44	45	46	47	48
49	50																						

No.1

I 我预测 你高分  
predicting

Attention !  
为了防止官方工作人员获

我预测教主  
iyucejz



粉色临时篇章 官方 临时新印刷试卷 (仅针对中国大陆)

1	2	3	4	5	6	7	8	9	10	11	12	13	14	15	16	17	18	19	20	21	22	23	24
25	26	27	28	29	30	31	32	33	34	35	36	37	38	39	40	41	42	43	44	45	46	47	48
49	50																						

## No.3

### 雅思听力真题 Version 08418

#### Section 4

主题提示: 澳洲鳄鱼研究 (听力题库还有非洲鳄鱼, 亚洲鳄鱼)  
Study on Australian Crocodiles

#### 31-40) Completion (one word only)

- 31 this time research is special coz the study is using
- 32 in the past, in previous studies  
it (test) was done with  无线电
- 33 problem: always losing
- 34 they are not easily captured, as they are cautious as to avoid



讨论 答案拼写检查 错误报告

#### 请输入答案

(多个答案请用“/”分开, 例: 答案1, 答案2)

31	satellite	satellite
32	radio	radio
33	signals	signals
34	people	people

34 they are not easily captured, as they are cautious as to avoid   
橙色是正确答案, ipredicting 正版印刷时新版有更新  
afraid of being followed by humans

35 first waited a whole week, then they follow the most  route  
way home (one word)

36  tracking devices (追踪工具) are set in the  of the  
crocodile (IELTS test papers offered by ks.ipredicting.com, copyright)

37 relocate the crocodile by using a   
原文: 通过直升机来观察一个流域鳄鱼的数量

38 crocodile has the ability to   
navigation ability (更新)

#### 39-40) Conclusions:

39 the crocodile find their  by using their sense to  
the

40 Crocodiles have same system like the  (复数)

在题库预测期间内, 不是每一篇文章考题都是近期考试的范围重点, 如需查看重点:  
请手机 (pad, 电脑) 登录在线预测电子系统 <https://www.iyuice.com> (我预测)

34	people	people
35	direct	direct
36	head	head
37	helicopter	helicopter
38	navigate	navigate
39	sun	sun
40	birds	birds

得分: 100

重新做题 交卷 返回

返回

# 如何利用系统突击的学习进度缩小范围

[首页](#)
[免费范围](#)
[封闭集训营](#)
[网络班](#)
[口语高频](#)
[写作题库](#)
[论坛](#)
[课程视频](#)
[加入我们](#)

---

听力S4突击A(周一晚上8点开通)

重点顺序 [标准重点1](#) [标准重点2](#) [临时试卷](#) [二级战备](#) [广告](#) [命中删除](#) [答案](#)

☒ 查看全部
 ☐ 只看重点
 ☐ 只看不会重点
 [点击 取消已会重点](#)

3	4	5	6	7	8	9	10	11	12	13	14	15	16	19	20	21	22	23	24	25	26	27	28
29	30	31	32	33	34	35	36	37	38	39	40												

[返回](#)

**No.3**

🔊 新!!! 非常重要: 请注意突击页面顺序调整和机经中答案错误的

[讨论](#)
[答案拼写检查](#)
[错误报告](#)

🔊 名师公益大讲堂: <https://ke.qq.com/course/100040#term>

---

听力S4突击A(周一晚上8点开通)

重点顺序 [标准重点1](#) [标准重点2](#) [临时试卷](#) [二级战备](#) [广告](#) [命中删除](#) [答案](#)

☒ 查看全部
 ☐ 只看重点
 ☐ 只看不会重点

4	5	9	10	12	13	14	16	19	20	22	25	26	31	32	33	34	35	36	37	38	40
---	---	---	----	----	----	----	----	----	----	----	----	----	----	----	----	----	----	----	----	----	----

**No.32**

🔊 调整和机经中答案错误的更新!!! 非常重要: 请注意突击页面顺

[讨论](#)
[答案拼写检查](#)
[错误报告](#)

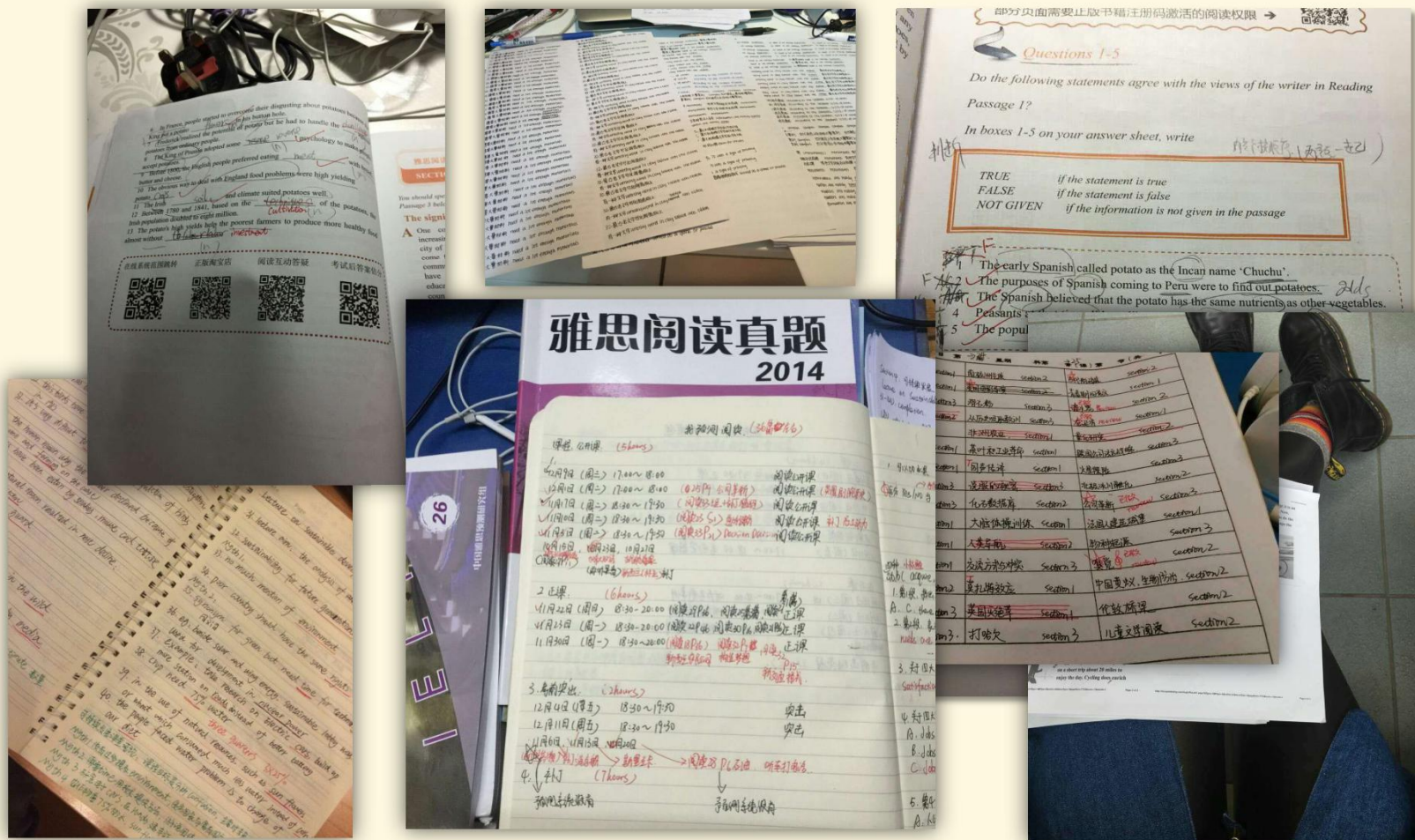
🔊 rse/100040#term\_id=100153062 2016年6月我预测雅思名

雅思听力真题 Version 07403

Section 4



# 打卡：将作业或练习用微信或微博的形式向教主打卡



# 面授见面集训营（北京，上海，厦门.....）

我预测你高分  
I predicting

admin 个人中心

首页 免费范围 封闭集训营 网络班 口语高频 写作题库 论坛 课程视频 加入我们

厦门 西安 北京 上海 深圳 成都

## 我预测押题集训营

考前提分 预测与实力并重 高分和梦想同在 厦门



- 请注意：
- 以下为预测题中**S4， S3**部分
- 目前预测题中**S2， S1**的篇章通过学员考前登录考前突击目录自行记忆
- 中记委，防拖办 友情提示：
- 如果你的提分要求在听力 **+2.5**分以下，建议放弃预测中的**S2**部分，
- 如果的提分要求在 **+1.5-2**分以下，建议放弃预测中的**S2**和**S1**部分



## 雅思听力真题 Version 05413

### Section 4

### 《听力预测机经15》第11页

主题提示：参加学校汽车模式研发设计比赛  
non-driving vehicle competition

#### 31-33) completion

31 contestants including students from engineering school and **computer science** department;

32 requirement: motors can automatically avoid the obstacles on the road such as **rocks**

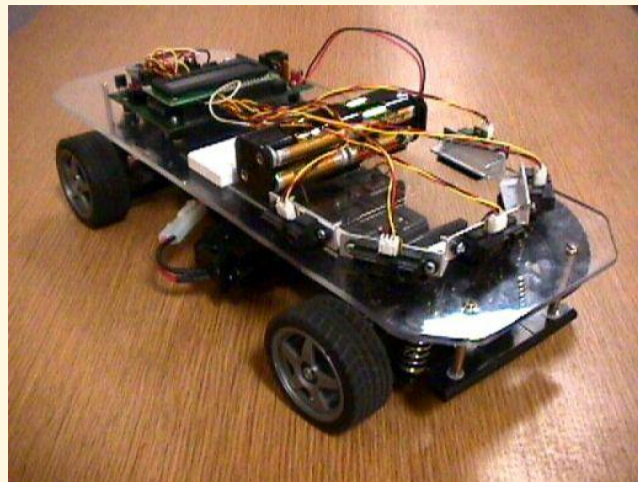
参加比赛的车都各有所长，比如去年在野外进行测试

33 参赛的车加入了 Hi-tech, such as **video cameras**, laser and **laptop**.....



Computer Science





### 34-36) Multiple choices

34 举行这种比赛的 purpose of holding this match:

A advantages in financing and job hunting

让某些公司知道, 这样可以拉赞助 *sponsors*;

B inspire students' interest to discover new skills

C **to find new feature for industry**

35 评选的标准是成功主要取决于

A **software programming**

B good performance in harsh condition

C ..... **the sophisticated mechanism** *the complicated wins*

36 What is surprising for the competition:

A how simple of the design

B **how successfully the design went well** (原文: 这些车造起来非常之复杂, 所以很不容易造好, 可以成功造出就是个奇迹 *miracle*.)

C can be produced in short term



seminar  
workshop  
lecture  
tutorial

C can be produced in short term

### 37-40 Table completion

early May	introduction of a 37 <b>seminar</b>	work 38 <b>skills</b> and experience
June	trip to <b>factory</b>	<b>I 我预测 你高分 predicting</b>
September	<b>Workshop</b> of discussion of 39 <b>ideas</b>	selection of the: 40 <b>team</b>



## 雅思听力真题 Version 05413

### Section 4

主题提示：参加学校汽车模式研发设计比赛  
non-driving vehicle competition

#### 31-33) completion

31 contestants including students from engineering school and [ ] science department;

32 requirement: motors can automatically avoid the obstacles on the road such as [ ]

参加比赛的车都各有所长，比如去年在野外进行测试

33 参赛的车加入了 Hi-tech, such as [ ], laser and laptop.....







### 34-36) Multiple choices

34 举行这种比赛的 purpose of holding this match:

A advantages in financing and job hunting

让某些公司知道, 这样可以拉赞助 sponsors:

B inspire students' interest to discover new skills

C to find new feature for

35 评选的标准是成功主要取决于

A software programming

B good performance in harsh condition

B a stable structure (IELTS test papers offered by ks.ipredicting.com, copyright)

C .... the sophisticated the complicated wins 是机械和软件结合

36 What is surprising for the competition:

A how simple of the design 是在比赛现场发生了很多状况, 不能很好的操作

B how the design went well (原文: 这些车造起来非常之复杂, 所以很不容易造好, 可以成功造出就是个奇迹 miracle, )

C can be produced in short term

### 37-40 Table completion (回忆时: 表格位置不一定 100% 试卷一致)

early May	introduction of a 37		I 我预测你高分 predicting
June	Discussion of 38		Workshop
September	work 39	and experience	selection of the:
(IELTS test papers offered by ks.ipredicting.com, copyright)			

# 雅思听力真题 Version 05417

## Section 4

《听力预测机经15》第15页

更多相关背景参考, 扫描二维码 →



主题提示: (蜜蜂视觉)

Bee eyesight can be used for human research, such as helping blind person and exploring Mars.

31-34) Choose the correct letter:

复印母书很可能是老旧的版本 (存在错误/遗漏, 不能升级电子系统)

正版为底色橙色 复印黑白盗版

31 The amazing part is : C **small brain** (*bees can fly smoothly even though they have very small brain*)

32 How do people distinguish one bee from another?

B **color stripes** (*by looking for signs in different colors on bees' body*) 辨认个体蜜蜂的方法是通过在蜜蜂身



上不同颜色的标记, 不选C a sign因为说了标记在wings的下面.....



33 那个科学家在蜜蜂翅膀wings clings (附着) B




**a sign**

applied to their bodies (*The scientist stick a sign under wings*)

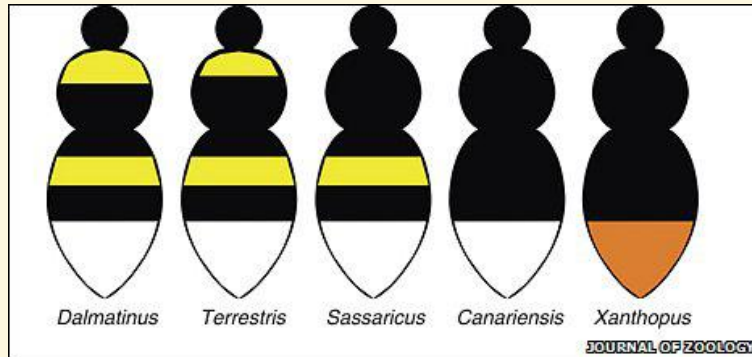
- 34 Choose **we can calculate the distance** (*we can know how far the bee can fly by knowing the time it flies*)

### 35-40) Table Filling

(it talks about the current problems and advantages of road detection)

	current problems	advantages
	35 盲人拐杖 sticks have not enough <b>warnings</b> ( <i>lack of enough warning</i> )	36 drivers can find <b>instruments</b> with the help of <b>radar</b> ( <i>听到了 camera</i> )
37 <b>Urban area</b>		38 the way of flying can help us know 蜜蜂的特殊飞行方式可以测量出飞行 <b>mileage</b> and <b>speed</b>
39 <b>the Mars</b>		10 life.... if there is <b>water</b> <b>在线预测电子系统</b> <b><a href="http://ks.ipredicting.com">http://ks.ipredicting.com</a></b>





$$D = rt$$

distance    rate    time





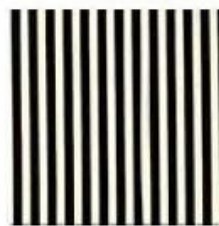


31-34) Choose the correct letter:

31 The amazing part is : C **small** (bees can fly smoothly even though they have very small brain)

32 How do people distinguish one bee from another?

B **color** (by looking for signs in different colors on bees' body) 辨认个体蜜蜂的方法是通过在蜜蜂身上不同颜色的



标记, 不选C a sign 因为说了标记在wings的下面.....

33 那个科学家在蜜蜂翅膀wings clings (附着)




C **a sign applied to their bodies under** (The scientist stick a sign under wings)

34 Choose **we can calculate the** (we can know how far the bee can fly by knowing the time it flies)

为什么蜜蜂能快速的找到食物

### 35-40) Table Filling

(it talks about the current problems and advantages of road detection)

	current problems	advantages
	35 盲人拐杖 sticks have not <input type="text"/> enough <input type="text"/> (lack of enough warning)	36 drivers can find instruments with the help of <input type="text"/> (听到了 camera)
37 <input type="text"/> area		38 the way of flying can help us know 蜜蜂的特殊飞行方式可以测量出飞行 mileage and <input type="text"/>
the <input type="text"/>	39 the <input type="text"/> 	40 life... if there is <input type="text"/> 在线预测电子系统 <a href="http://ks.ipredicting.com">http://ks.ipredicting.com</a>



Section 4

《雅思听力机经18》 P36

主题提示： 穴居动物 cave animal, *Troglodyte*: are small cave-dwelling animals that have adapted to their dark surroundings.

分成暂时穴居，穴居爱好者和永久穴居

1<sup>st</sup> animal -live near cave entrance

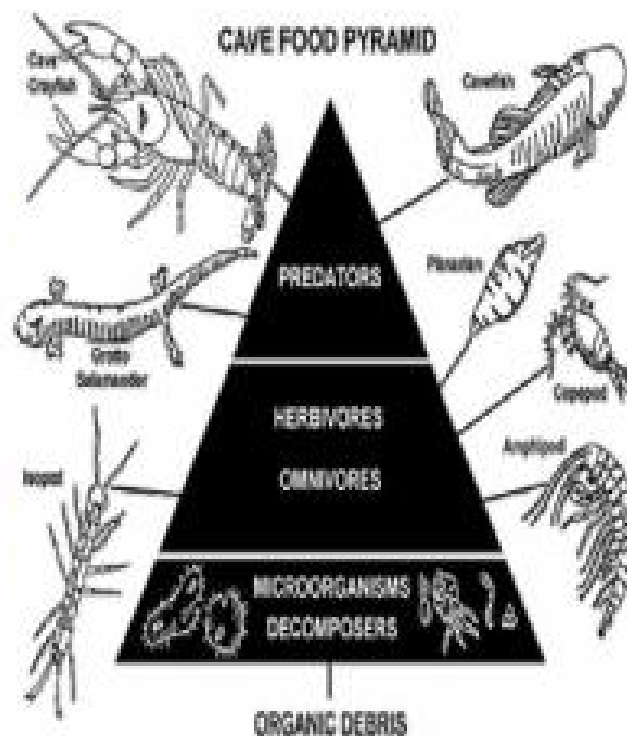
31 暂时穴居 (troglophile) 喜欢洞口 cave's **entrance** and opening : twilight and transition zones of caves

32 rats 使用它们的 sight 进入洞穴，然后用 sense of **smell** to find the way out

*To compensate for lack of vision, they have evolved longer legs and antennae, sensory hairs and a better sense of smell than their surface-dwelling counterparts.*

33 some *Troglodyte* to find (in search of) **water** in the cave area

2<sup>nd</sup> animal- cave lover 穴居爱好者





34 bats lived in caves during the day of **winter** to hibernate (*test papers offered by ipredicting.com, copyright*)

35 穴居爱好者说有个动物就喜欢潮湿阴暗 **damp** and **dark** environment



(*test papers offered by ks.ipredicting.com, copyright*)

*Troglobites spend their entire lives in the total darkness of caves*

36 这类动物在洞穴 because other animals will eat their **eggs** will be eaten by a specialised predator

37 永久穴居中的 \*\*\*: colorless **blind**

*while its other senses, particularly those of smell and hearing, are acutely developed.*

(*IELTS test papers offered by ks.ipredicting.com, copyright*)

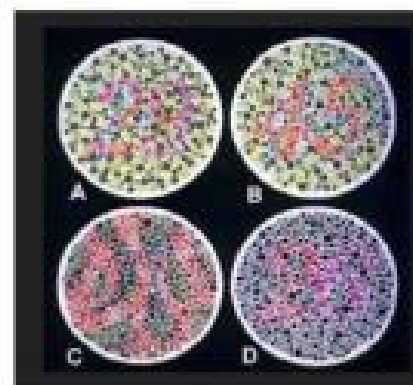
介绍生活在洞穴中的生物,

38 cave **fish** will have reduced eyes.

*Fish, salamanders, insects, spiders will have reduced eyes.*

39 nutrient in cave **soil**

40 these animals are in danger, (bats) are affected by **disease**



橙色是正确答案选项, ipredicting 正版印刷时新版有更新

## 雅思听力真题 Version 11404

### Section 4

主题提示：穴居动物 cave animal, *Troglodyte*: are small cave-dwelling animals that have adapted to their dark surroundings.

分成暂时穴居，穴居爱好者和永久穴居

#### 1<sup>st</sup> animal -live near cave entrance

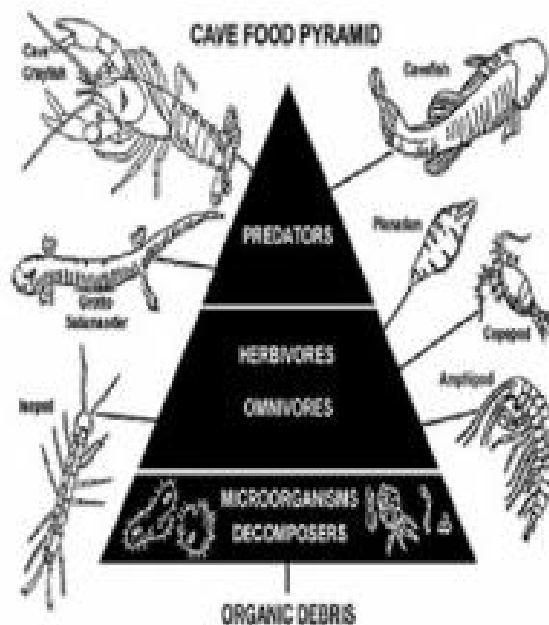
31 暂时穴居(troglophile)喜欢洞口 cave's  and opening ; twilight and transition zones of caves

32 rats 使用它们的 sight 进入洞穴，然后用 sense of  to find the way out

To compensate for lack of vision, they have evolved longer legs and antennae, sensory hairs and a better sense of smell than their surface-dwelling counterparts.

33 some *Troglodyte* to find (in search of)  in the cave area

#### 2<sup>nd</sup> animal- cave lover 穴居爱好者



34 bats lived in caves during the day of  to hibernate (*test papers offered by ipredicting.com, copyright*)

35 穴居爱好者说有个动物就喜欢潮湿阴暗  and  environment



(*test papers offered by ks.ipredicting.com, copyright*)

*Troglobites spend their entire lives in the total darkness of caves*

36 这类动物在洞穴 because other animals will eat their  will be eaten by a specialised predator

37 永久穴居中的 \*\*\*: colorless

*while its other senses, particularly those of smell and hearing, are acutely developed.*

(*IELTS test papers offered by ks.ipredicting.com, copyright*)

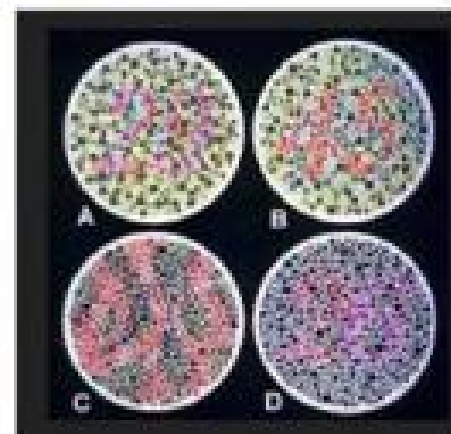
介绍生活在洞穴中的生物,

38 cave  will have reduced eyes.

*Fish, salamanders, insects, spiders will have reduced eyes.*

39 nutrient in cave

40 these animals are in danger, (bats) are affected by



橙色是正确答案选项, ipredicting 正版印刷时新版有更新



## 雅思听力真题 Version 08418

### Section 4

### 《听力预测机经14》第13页

主题提示：澳洲鳄鱼研究（听力题库还有非洲鳄鱼，亚洲鳄鱼）

Study on Australian Crocodiles

#### 31-40) Completion (one word only)

31 this time research is special coz the study is using **satellite**

32 in the past, in previous studies

it (test) was done with **radio** 无线电

33 problem : always losing **signals**

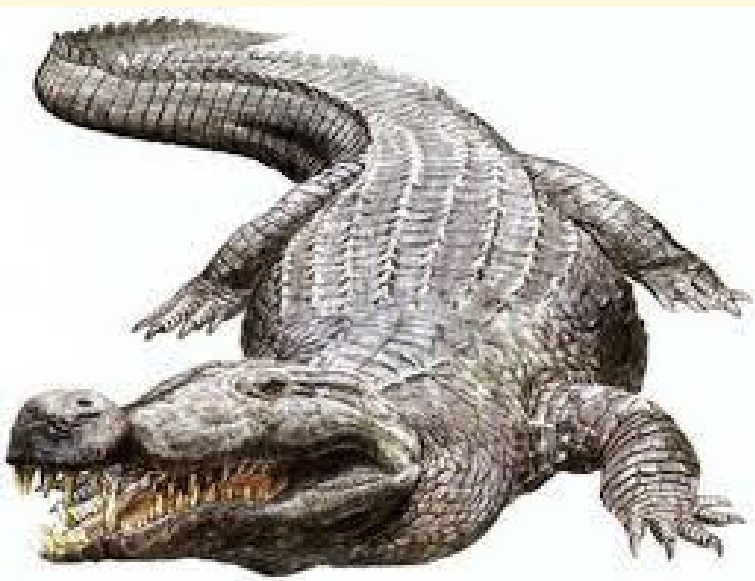
34 they are not easily captured, as they are cautious as to avoid **people**

橙色是正确答案, *ipredicting* 正版印刷时新版有更新

*afraid of being followed by humans*







**saltwater crocodile**

OCO



**freshwater crocodile**

# Australian Crocodiles

The crocodile has always figured prominently in **tropical** Australia. The crocodile is a prominent figure in aboriginal **culture**, appearing frequently in **stories, songs, artwork** and other parts of the culture of tribes in the region.



35 first waited a whole week, then they follow the most **direct** route  
way home (*one word*)



36 **tracking** devices (追踪工具) are set in the **head** of the  
crocodile (*IELTS test papers offered by ks.ipredicting.com, copyright*)

37 relocate the crocodile by using a **helicopter**

原文：通过直升机来观察一个流域鳄鱼的数量

原文：通过直升机来观察一个流域鳄鱼的数量

38 crocodile has the ability to **navigate**

navigation ability (← 更新)

### 39-40) Conclusions:

39 the crocodile find their **direction/orientation** by using their sense to the **sun**

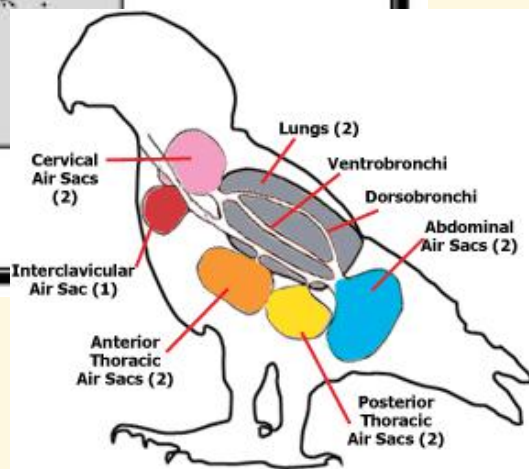
40 Crocodiles have same system like the **birds** (复数)



在题库预测期间内，不是每一篇文章考题都是近期考试的范围重点，如需查看重点：

请手机(pad, 电脑)登录在线预测电子系统；

(我预测)

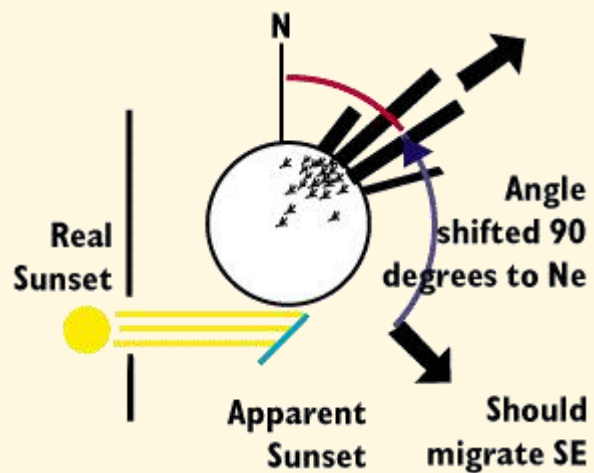
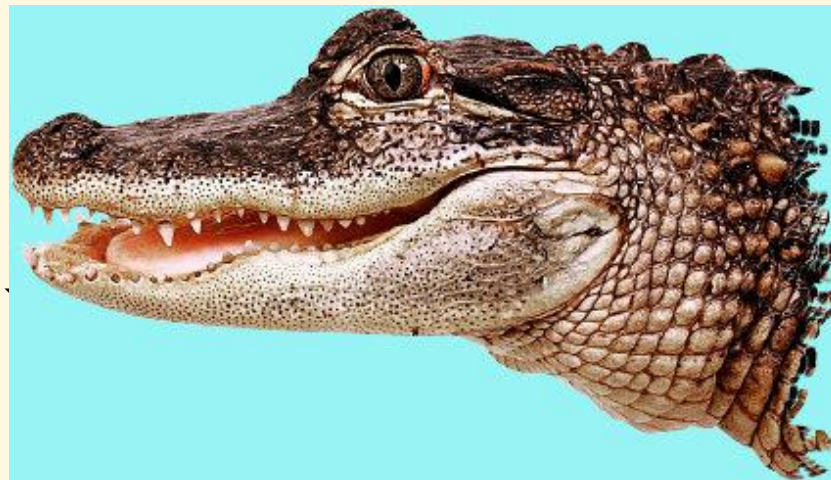








市场



## 雅思听力真题 Version 08418

### Section 4

主题提示：澳洲鳄鱼研究（听力题库还有非洲鳄鱼，亚洲鳄鱼）

Study on Australian Crocodiles

#### 31-40) Completion (one word only)

31 this time research is special coz the study is using

32 in the past, in previous studies

it (test) was done with  无线电

33 problem : always losing

34 they are not easily captured, as they are cautious as to avoid



35 first waited a whole week, then they follow the most  route

way home (*one word*)

36 **tracking** devices (追踪工具) are set in the  of the crocodile (*IELTS test papers offered by ks.ipredicting.com, copyright*)

37 relocate the crocodile by using a

原文：通过直升机来观察一个流域鳄鱼的数量

38 crocodile has the ability to

navigation ability (← 更新)





38 crocodile has the ability to   
navigation ability (← 更新)

### 39-40) Conclusions:

39 the crocodile find their  by using their sense to  
the

40 Crocodiles have same system like the  (复数)



在题库预测期间内，不是每一篇文章考题都是近期考试的范围重点，如需查看重点：  
请手机(pad, 电脑)登录在线预测电子系统 **!(我预测)**

Section 4

《雅思听力机经15》 P70

主题提示：澳洲公路交通发展史

Australian transportation development from 1940-1990: development from private car to public transportation

31-40) Sentence Completion: *no more than two words*



31 In 1940s, 60% users used **public transport**

*(test papers offered by www.iyuce.com, copyright)*

32 The road used to be crowded and **uncomfortable**

Were affordable

33 In 1940s, car was associated with **freedom**

34 There are 5 disadvantages of car, the last one ( reason why few people bought cars) high **taxes** on cars

*(test papers offered by www.iyuce.com, copyright)*

35 more motorists until new **government election** in 1949.



(test papers offered by www.iyuice.com, copyright)

36 Driving affects **relationships** between people.

37 1970s: Driving affect road condition: road are jammed and **polluted** (test papers offered by www.iyuice.com, copyright)

38 There was fewer\*\*\*\* , but more in 1980s and 1990s, more **lanes** and road **directions** appeared.



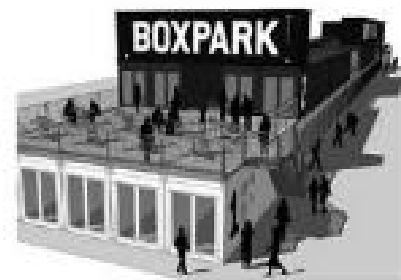
(test papers offered by www.iyuice.com, copyright)

39 In this field, it is different from the past: the design of **advertisements** to attract motorists.

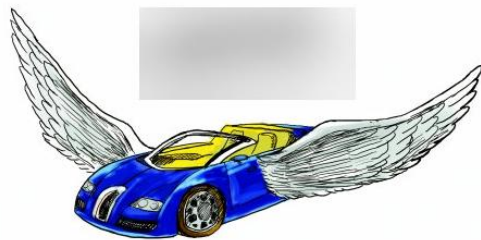
40 less business , booming development since the creation of the **shopping mall**  
more drive in places: restaurants



IELTS9999









# 纯答案回忆配图2



## 雅思听力真题 Version 44021

### Section 4

主题提示：澳洲公路交通发展史

Australian transportation development from 1940-1990: development from private car to public transportation

31-40) Sentence Completion: *no more than two words*



31 In 1940s, 60% users used

*(test papers offered by www.iyuce.com, copyright)*

32 The road used to be crowded and

Were affordable

33 In 1940s, car was associated with

34 There are 5 disadvantages of car, the last one ( reason why few people bought cars) high on cars

*(test papers offered by www.iyuce.com, copyright)*

35 more motorists until new in 1949.





36 Driving affects [redacted] between people.

37 1970s: Driving affect road condition: road are jammed and

[redacted] (test papers offered by www.iyuce.com, copyright)

38 There was fewer\*\*\*\* , but more in 1980s and 1990s, more

[redacted] and road **directions** appeared.

(test papers offered by www.iyuce.com, copyright)

39 In this field, it is different from the past:

**the design of** [redacted] to attract motorists.

40 less business , booming development since the creation of the [redacted]

more drive in places: restaurants



雅思听力真题 Version 11313



Section 3

《听力预测机经15》第114页

更多补丁查看和全部题库机经，范围→

主题提示： 地理实习课程报告反馈

Feedback for geography field trip report

21-26) multiple choices

21 Benefit on Completion of this program of report 对她的好处？

B **help identity \*\*\* next semester**

next term 帮助她选择课程

C for next lectures template

22 What the suggest for the first draft ?

**Download a template and revise some part**

23 How did they choose Course sites 地方是怎么选的：

A chose one which is easy to access to

B selected carefully in a map C **randomly picked**

原文说先在地图上找到了 6 个地点，然后\*\*\*\*，结果发现是很容易进入的地

I 我预测 你高分  
predicting



<http://weibo.com/ioltu9>

App Store搜索  
“爱普我预测”

iPhone  
手机APP

免费查看  
预测范围





八的地

24 What the Main aim of the field trip  
女生去做实验(measurement)的内容:  
A just to apply filed techniques learned  
B measuring a tree density

C **soil ingredient in the sand dune** 的构成

25 What the advantages including other's data?  
为什么用别人的数据,

A **make data more reliable** 让自己的数据可靠

26 Which method is more simple

A **use an elevator to observe**



下考预测你高分

A **use an elevator to observe** height of land

**27-30) Matching** : problem in the report

27 The Equipment -- *too complicated and* **training before going there**  
(IELTS test papers offered by ipredicting.com, copyright):

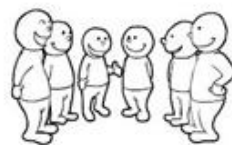
28 Data collecting sheet --- *not well organised and* **better delete something**  
*made it clear* ; 学生 agreed

(IELTS test papers offered by ipredicting.com, copyright)

29 reference material - **more materials need to be included**  
*need a wider range of reference, still not a full picture,*

30 group talk with strangers - **keep it next time**

学生: 不知道别人怎么想, 但是自己感觉 *learned a lot*, 坚持吧! *repeat*



# 雅思听力真题 Version 11313



## Section 3

更多补丁查看和全部题库机经, 范围→

主题提示: 地理实习课程报告反馈

Feedback for geography field trip report

### 21-26) multiple choices

21 Benefit on Completion of this program of report 对她的好处?

B

next term 帮助她选择课程

C for next lectures template

22 What the suggest for the first draft ?

Download

and revise some part

我预测你高分  
Predicting



<http://weibo.com/iclta9>

App Store搜索  
“爱普我预测”

iPhone  
手机APP

免费查看  
预测范围

23 How did they choose Course sites 地方是怎么选的:

A chose one which is easy to access to

B selected carefully in a map C

原文说先在地图上找到了 6 个地点, 然后\*\*\*\*, 结果发现是很容易进入的地



人的地

24 What the Main aim of the field trip  
女生去做实验(measurement)的内容:  
A just to apply filed techniques learned  
B measuring a tree density

C **in the sand dune** 的构成

25 What the advantages including other's data?  
为什么用别人的数据,

A **make data**

26 Which method is more simple

A **use an** **observe**

27-30) Matching : problem in the report

27 The Equipment -- **too**

*papers offered by ipredicting.com, copyright):*

28 Data colleting sheet --- **not well orgnised** and **Better**

*made it clear ; 学生 agreed*

*papers offered by ipredicting.com, copyright)*

29 reference material -- **need a** **of reference**

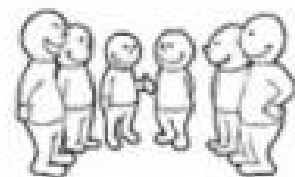
still not a full picture

30 group talk with strangers -- **next time**

学生: 不知道别人怎么想, 但是自己感觉 **learned a lot**, 坚持吧:



**I 我预测你也在  
predicting**





Section 3

《听力预测机经15》第98页

主题: New Zealand carving Art

一男一女对话, 讨论关于 Hi-keti, 新西兰怪石雕刻的研究。

21-25 multiple choices (offered by iyuce.com, copyright)

21 both students agreed with that 为什么那个雕塑奇形怪状的

A **greenstone is too hard to be carved (regularly)**

B it is more convenient to use it like that

C it makes it more handy

22 why few greenstone was found in archaeological sites

A it has few introduction into market

B it was stolen by tomb raider

C **the owner take care of them** *people own it like a precious stone ;And Kept completely intact* 完好保存

23 New Zealanders used this stone to

A the most important art style

B **communicating with their ancestors**

C Maori think it an object cannot be owned by any person



24 what is the distinction between two type of moain-he-im(那个雕塑)

A **metal head size ratio to other parts**

B special head type

C **the position of hands to legs** *the both positive.... right legs*

女的说有各种各样的;男的说的是的 但是可以分成两大类, 不是根据头 而是根据脚, 在每种样式里面头的样子可能不同

*the position of hands to legs*



25 New (modern, fake) Maori stone can be recognised because

A greenstones' style

B **regular hole and the cord**

C stylish \*\*\*\*

26-30 matching

A attach parts to the cord

B polish stone eyes

C to be made the end

D smoothen the stone

E form the shape

F clean the greenstone

G bond Two ends together

*(offered by ipredicting.com, copyright)*

字母顺序和试卷不一致, 答案内容对

26 sand ---- **D**

*form(打磨) the shape of cord, clean*

27 stitch and string ---- **E**

*use this tool to connect its head and body*

28 bark ---- **B** *make eyes shining;*

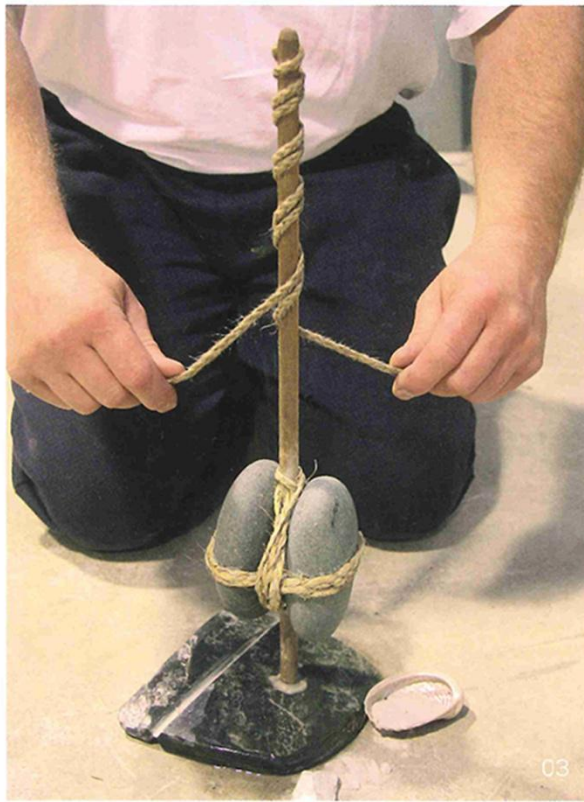
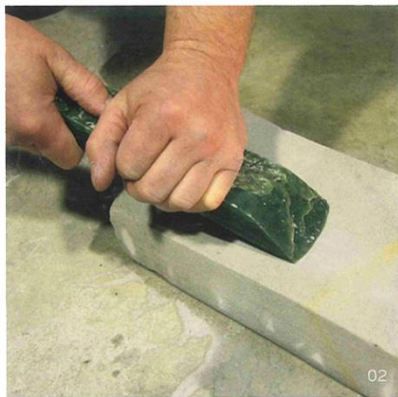
*make it more flexible*

29 wax ---- **A** *use wax to let it bright....*

30 bone ---- **G** *used to carve details*

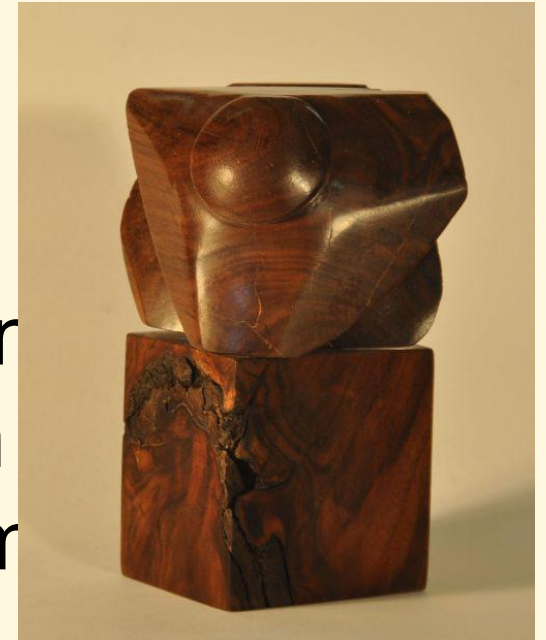








he bottom is interesting in  
there is a **bark** inclusion  
makes it very handsome



was ornamented with

red cooling **wax** at the base

## 21-25 multiple choices (offered by iyuce.com, copyright)

21 both students agreed with that 为什么那个雕塑奇形怪状的

A **greenstone is too to be carved (regularly)**

B it is more convenient to use it like that

C it makes it more handy

22 why few greenstone was found in archaeological sites

A it has few introduction into market

B **it was stolen by tomb raider**

(test papers offered by ipredicting.com, copyright)

C **the take care of them** people own it like a precious stone ; And Kept completely intact 完好保存

23 New Zealanders used this stone to

A the most important art style

B **communicating with their**

C Maori think it an object cannot be owned by any person

24 what is the distinction between two type of moain-he-im(那个雕塑)

A metal head size ratio to other parts

B special head type

C **the of hands to legs** the both positive.... right legs  
女的说有各种各样的;男的说是的 但是可以分成两大类, 不是根据头 而是根据脚, 在每种样式里面头的样子可能不同

the position of hands to legs

25 New (modern, fake) Maori stone can be recognised because

A greenstones' style

B **and the**

C stylish \*\*\*\*



## 26-30 matching 配对答案字母顺序仅供参考，记住理解原文细节

A attach\*\*\* to

B polish stone eyes

C to be made the end

D smoothen

E form the shape


F clean the greenstone

G bond it together

*(offered by ipredicting.com, copyright)*

26 sand ----- 

*form(打磨) the shape of cord , clean*

27 stitch and string ----- 

*use this tool to connect its head and body*

28 bark ----- 

*make it more flexible*

29 wax ----  *make eyes shining;*

*use wax to let it bright....*

30 stone --- 

*used to carve details*



Section 3

《雅思听力机经14》 P59

主题提示: Jen 和 Bill 讨论 assignment 的问题 team member 分工 (Irey) 两个 team members 在抱怨小组其他成员或好或不好的表现。他们应该是在课间约了一个地方大家见面, 然后只有对话中这两个人来了, 先说了一会他俩对这些人的看法, 说完其他人还没来, 然后他俩就把任务分配了一下。Bill 之后有课, 然后 Bill 上课去了

21 what has Irey recently done?

A she almost finished planning the experiment

B tried to catch up his lessons C **spend a long time in lab**

22 What's the Bill's attitude of Kim?

A **grateful to his contribution** *terrific 说这个人好像很极端的做实验还是作业*

(IELTS test papers offered by ipredicting.com, copyright)

B he is too stylish C resent him for lack of lab work

23 Kim 顾着自己的 fiancée 未婚夫, 导致

B **not enough keeping in touch** *Kim 这个项目不投入 avoiding going to the lab。Jen 说很久都没见过她,*

24 他们对其他成员的 attitude to other members ?



A **fiancée** is a bride-to-be:





24 他们对其他成员的 attitude to other members ?



A Jen think the man who is good at math is contributory

B 如果没有 (Irey) 项目可能 fail

*if no their help, they will died 这对话里好多地方他们都在笑)*

C **project nearly finished because (人名\*\*\*\*) completed the data analysis**

25 Why Jen was invited to the project?

A she was popular to everyone 这是 Jen 自己讲的，估计不对。

B **she always finish reading her assignment**

C close to the professor 意思是和教授很接近

C close to the professor 意思是和教授很接近

请手机扫描二维码，  
跳转预测电子系统

**26-30 matching** (答案字母顺序不是 100%，不可记忆答案字母组合)

A abstract

B acknowledgement

C methodology

D bibliography

E literature review

F results

G discussion

26 Irey ---

C

27 Kim ---

F

28 Jen ---

E

*Jen is popular with everyone*

29 Bill---

D

*(IELTS test papers offered by ipredicting.com, copyright)*

Linda ---

G/A

答案回忆有争议



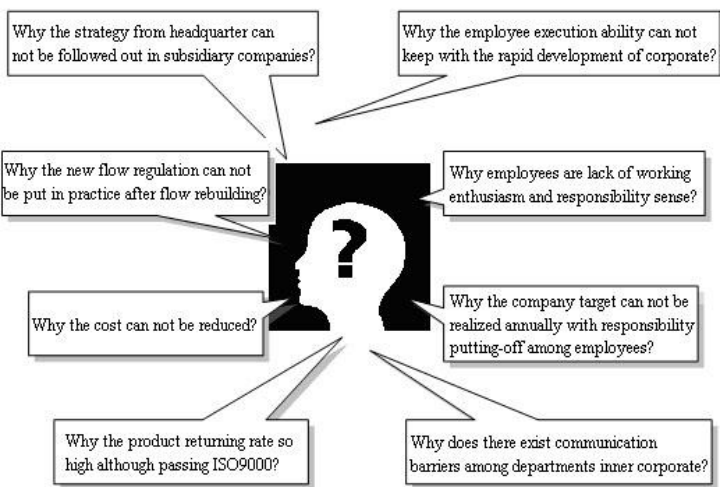




## 回忆配图2

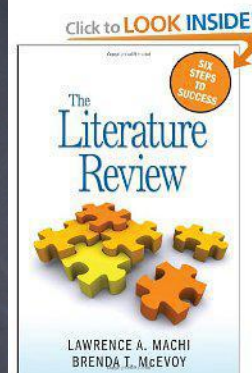
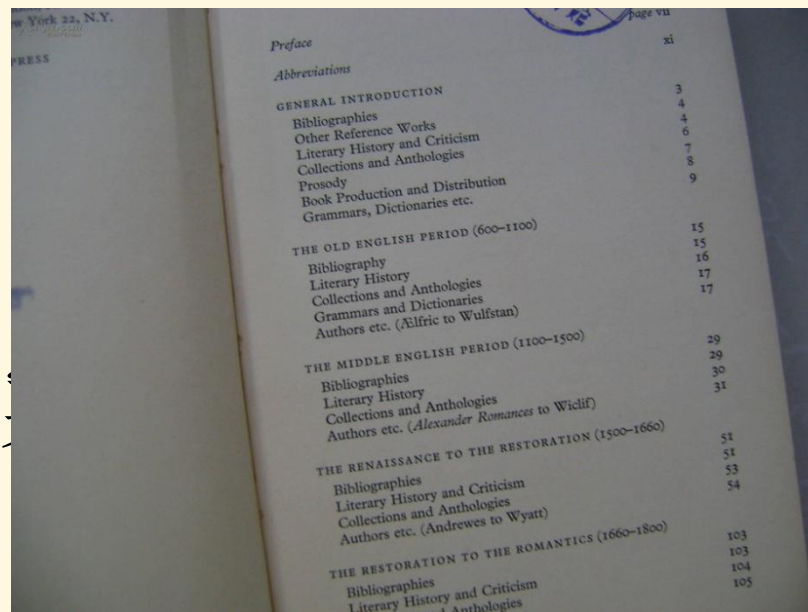






金

Irey



bibliography

Jen

Region of Origin	China (People's Republic of)	Language	Chinese
Repeating IELTS (Y/N)	N	Previous Test Date	
		Previous Test Centre	
<b>Test Results</b>			
Listening	8.0	Reading	9.0
Writing	6.5	Speaking	6.5
Overall Band Score		7.5	

Kim



## 雅思听力真题 Version 11328

### Section 3

**主题提示:** Jen 和 Bill 讨论 assignment 的问题 team member 分工 (Irey) 两个 team members 在抱怨小组其他成员或好或不好的表现。他们应该是在课间约了一个地方大家见面, 然后只有对话中这两个人来了, 先说了一会他俩对这些人的看法, 说完其他人还没来, 然后他俩就把任务分配了一下。Bill 之后有课, 然后 Bill 上课去了

21 what has Irey recently done?

A she almost finished planning the experiment

B tried to catch up his lessons C **spend a long time in**

22 What's the Bill's attitude of Kim?

A **grateful to his** in data analysis

terrific 说这个人好像很极端的做实验还是作业

(test papers offered by www.iyuice.com, copyright)

B he is too stylish C resent him for lack of lab work

23 Kim 顾着自己的 fiancée 未婚夫, 导致

B **not enough** Kim 这个项目不投入

avoiding going to the lab。Jen 说很久都没见过她,



A **fiancée** is  
a bride-to-be:



24 他们对其他成员的 **attitude to other members** ?



A Jen think the man who is good at math is contributory

B **if had not been Irey and kim's input, the project would have**

*if no their help, they will died* 这对话里好多地方他们都在笑)

C project nearly finished *because (人名\*\*\*\*) completed the data analysis*

25 Why Jen was invited to the project?

A she was popular to everyone 这是 Jen 自己讲的，估计不对。

B she always finish reading her assignment

C **the professor** 意思是和教授很接近



请手机扫描二维码，

访问预测电子系统

26-30 matching (答案字母顺序不是 100%，不可记忆答案字母组合)

A abstract

B acknowledgement

C methodology

D bibliography

E literature review

F results

G discussion

26 Irey --- ☐

27 Kim ---- ☐

28 Jen ---- ☐

*Jen is popular with everyone*

29 Bill----- ☐

*(test papers offered by www.iyuce.com, copyright)*

30 Linda ----- ☐

## Section 3

## 《雅思听力机经14》 P45

主题提示： 澳洲护士课程历史；导师和学生对话，护士问题

### History of nursing courses

#### 21-30) Multiple choices

21 the problem in first nurse in Australia ,..... 的问题（答案有争议）

A less respected B **had training oversea** C **poor pay/low pay** 挣得不多

*(test papers offered by www.iyuce.com, copyright)*

22. 1940s 最早的 training 出现的 problem 缺陷是 (not standard) →:

A work time is too long B carry out too much time C **cannot finish training**

**I 预测红点**  
**predicting**

*(IELTS test papers offered by ks.ipredicting.com, copyright)*

23. 1960s country hospitals 为什么会有困难

A carry out too much time 不好找工作

B **hospital became more specialised**

B uncomfortable building C limited opportunities  
country 和 city 的医院的看法是不一样的





App Store 搜索  
“爱普我预测”

iPhone  
手机APP  
免费查看  
预测范围



(test papers offered by ks.ipredicting.com, copyright)

24 是护士成为一门课程是 is because

A **needed high level health care** They are patient but need higher skills

B patient complained

C at the doctor request

25 what is the current situation?

**Need to improve booking service**

(test papers offered by ks.ipredicting.com, copyright)

I 我预测你高分  
predicting

## 26-30) Matching 教授学生讨论加不加信息

A. remain as it is

B. add information

C remove information.

26 background, -- **C**

27 categories of nurse, --- **B**

28 work conditions ---- **A** 维持原样

29 courses --- **B**

30 future of nursing --- **A**

# 雅思听力真题 Version 06316

## Section 3

主题提示： 澳洲护士课程历史；导师和学生对话，护士问题

History of nursing courses

### 21-30) Multiple choices

21 the problem in first nurse in Australia ,..... 的问题（答案有争议）

A less respected B **had training** C **poor pay** / *low pay* 挣得不多

*(test papers offered by www.iyuice.com, copyright)*

22. 1940s 最早的 training 出现的 problem 缺陷是 (not standard) ➡:

A work time is too long B carry out too much time C **cannot** **training**

**I 预测你**  
**predicting**

*(IELTS test papers offered by ks.ipredicting.com, copyright)*

23. 1960s country hospitals 为什么会有困难

A carry out too much time 不好找工作

B **hospital became more**

B uncomfortable building C limited opportunities

country 和 city 的医院的看法是不一样的



App Store搜索  
“我预测你高分”

iPhone  
手机APP  
免费查看  
预测范围



(test papers offered by ks.ipredicting.com, copyright)

24 是护士成为一门课程是 is because

A **needed** **health care** They are patient but need higher skills

B patient complained

C at the doctor request

25 what is the current situation?

**Need to improve** **service**

(test papers offered by ks.ipredicting.com, copyright)

I 我预测你高分  
predicting

## 26-30) Matching 教授学生讨论加不加信息

A. remain as it is	26 background, -- <input type="checkbox"/>
B. add information	27 categories of nurse, --- <input type="checkbox"/>
C remove information.	28 work conditions---- <input type="checkbox"/> 维持原样
	29 courses --- <input type="checkbox"/>
	30 future of nursing --- <input type="checkbox"/>



## 雅思听力真题 Version 08323

### Section 3

### 《听力预测机经17》第41页

主题提示：蜜蜂和螨虫的关系；

Varroa destructor and Varroa jacobsoni are parasitic mites

#### 21-26) 流程图matching

honeycomb; queen bee;

honey; brood cell; hive ; virus , blood

21 Varroa mites (螨) have been found on **flower**  
*feeding insects such as the bumblebee(ks.ipredicting.com)*

22 再到别的蜜蜂上, hide under **hive** 蜜蜂巢下面,

23 Cover their smell by **honey**,

进入蜜蜂体 The female mite enters a honey bee brood cell

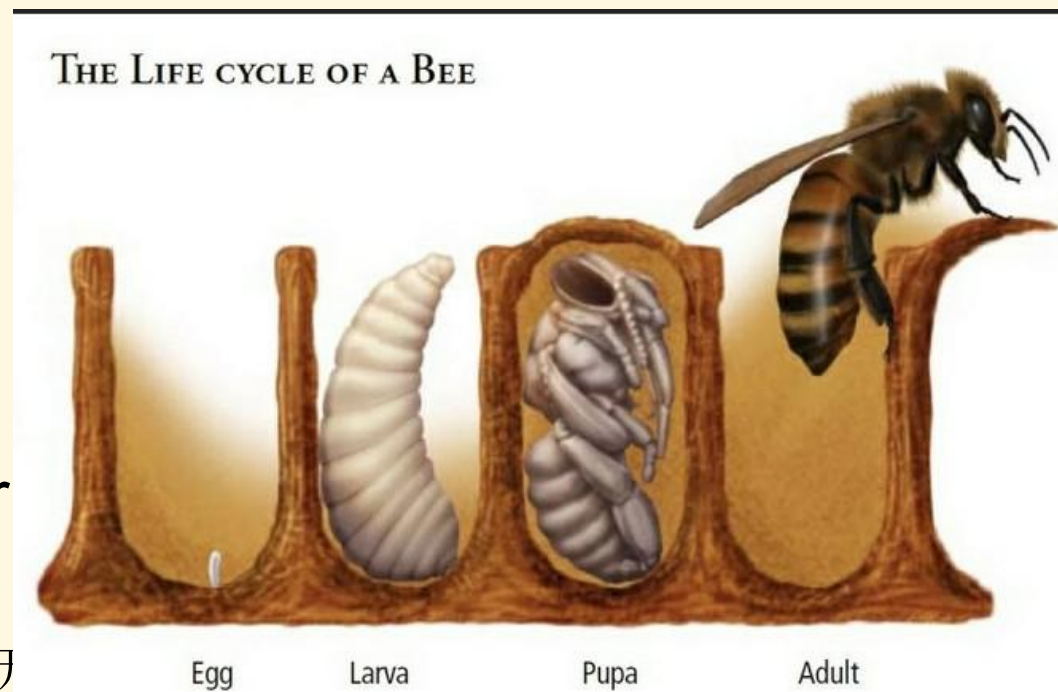
24 The adults suck the **"blood"** of adult honey bees  
*for sustenance, leaving open wounds. 喝蜜蜂的血*

25 The compromised adult bees are more prone to  
infections cause by **virus**

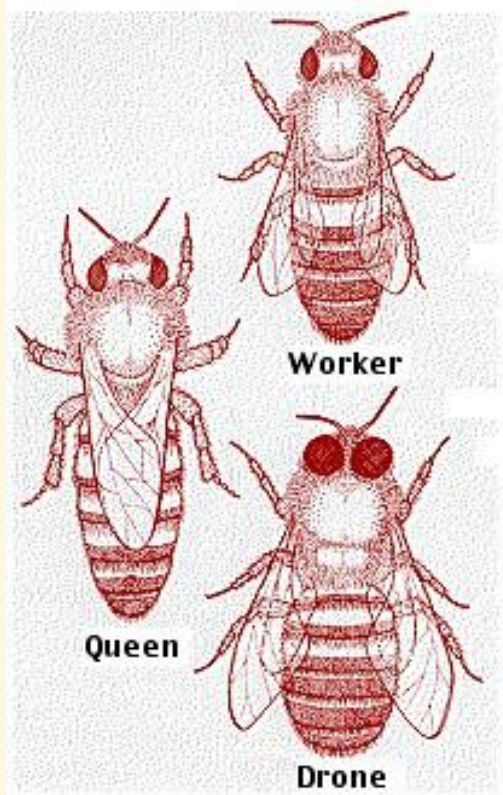


瓦螨 (Varroa destr  
**生虫**，卵圆扁平，  
重危害世界各地的西

。瓦螨不但寄生在**成蜂**或**幼虫**上吸食体液  
，使其寿命缩短，而且还**传播各种病毒**  
**和病菌**。

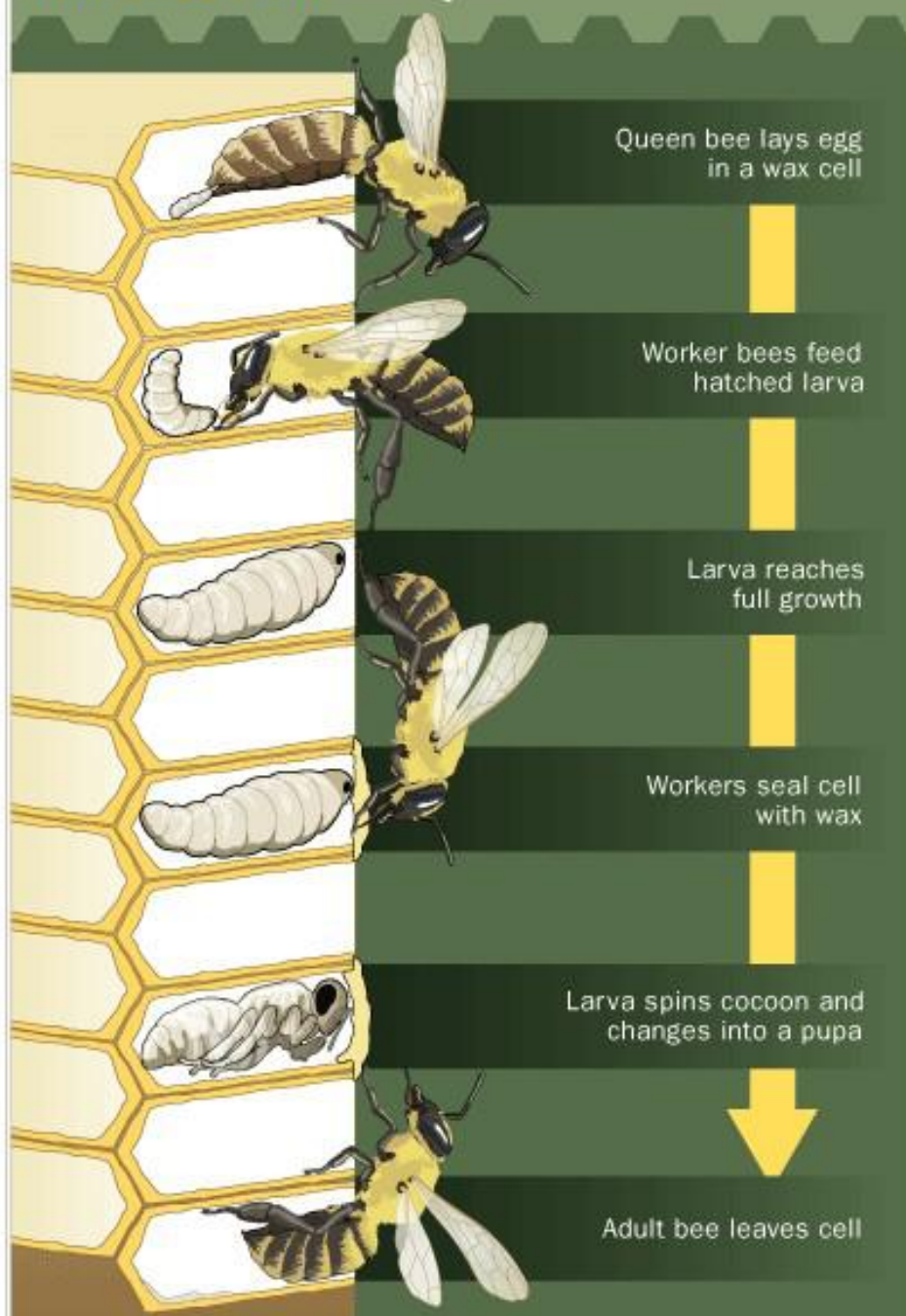


# I 我预测 你易分 predicting



## How Bees Work Life Cycle

©2007 HowStuffWorks





infections cause by **virus**

## 26-30) Matching, Multiple choices

- A adapt to warm climate,
- B too few to help farmers,
- C too aggressive,
- D unable to produce honey
- E do not know much

I 我预测 你高分  
predicting



www.shutterstock.com - 70596217

37 *Europe bumble bee* (大黄蜂) ----- **spread weeds** *They are very social bees and live in large "families". Pollinate*

37 \*\*\* bee ----- **do not know much**  
*little knowledge*

*(test papers offered by www.iyuice.com, copyright)*

38 *Italian bee* --- **warm climate**

*好环境, temperature no less than..... degree*

39 *Africanized honeybees* are ---- **very aggressive** *territorial, and may nest in awkward places 攻击活物, 攻击性太强 Africanized bees are extremely aggravated by loud noises, and vibrations. In addition, they are highly provoked by certain smells such as fresh cut grass and bananas*

40 *Rare Carniolan bees* --- **too few to help farmers** *数量少 cannot help farmers.*





## 21-26) 流程图 matching

honeycomb; queen bee;

honey; brood cell; hive ; virus , blood

21 Varroa mites (螨) have been found on   
*feeding insects such as the bumblebee([ks.ipredicting.com](http://ks.ipredicting.com))*

22 再到别的蜜蜂上, hide under  蜜蜂巢下面,

23 Cover their smell by ,

进入蜜蜂体 *The female mite enters a honey bee brood cell*

24 The adults suck the  of adult honey bees  
*for sustenance, leaving open wounds. 喝蜜蜂的血*

25 The compromised adult bees are more prone to  
infections cause by





## 26-30) Matching, Multiple choices

- A adapt to warm climate,
- B too few to help farmers,
- C too aggressive,
- D unable to produce honey
- E do not know much



37 *Europe bumble bee* (大黄蜂) ----- **spread** *They are very social bees and live in large "families". Pollinate*

37 \*\*\* bee ----- **do not** **much**

(test papers offered by www.iyuce.com, copyright)

38 *Italian bee* --- **warm**

*好环境, temperature no less than..... degree*

39 *Africanized honeybees* are ---- **very** *territorial, and may nest in awkward places 攻击活物, 攻击性太强 Africanized bees are extremely aggravated by loud noises, and vibrations. In addition, they are highly provoked by certain smells such as fresh cut grass and bananas*

40 Rare *Carniolan bees* --- **too few to help** *数量少 cannot help farmers.*

