



GUIXUE.COM
学 为 贵

学为贵·赢未来

雅思小作文

杨童-学为贵

版权所有 盗版必究

有奖举报热线：4006236898



- 动态趋势描述
- 三个时间以上--各个项目描述趋势变化
- 线图：有交点的+剩余
- 其他图形：趋势相近分段



GUIXUE.COM

学为贵

学为贵·赢未来

WRITING TASK 1

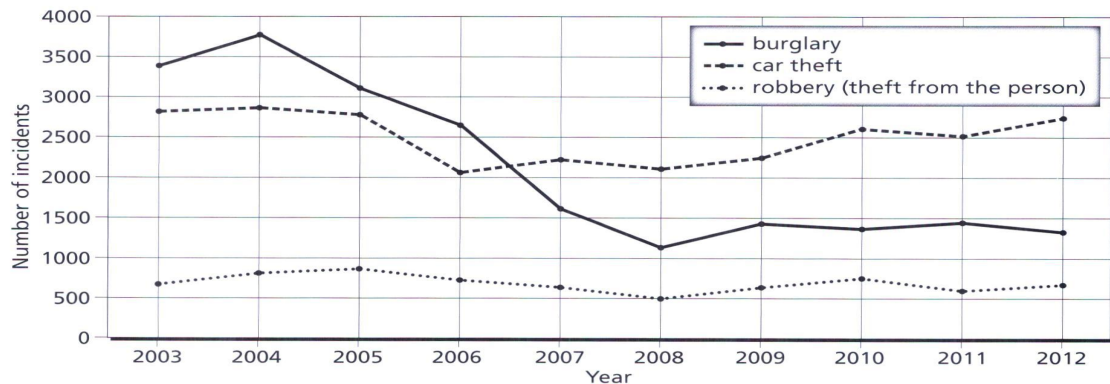
You should spend about 20 minutes on this task.

The chart below shows the changes that took place in three different areas of crime in Newport city centre from 2003–2012.

Summarise the information by selecting and reporting the main features, and make comparisons where relevant.

Write at least 150 words.

The changing rates of crime in the inner city from 2003–2012



版权所有 盗版必究

有奖举报热线: 4006236898



GUIXUE.COM
学 为 贵

学为贵·赢未来

动静结合比较

- 先动态后静态

版权所有 盗版必究

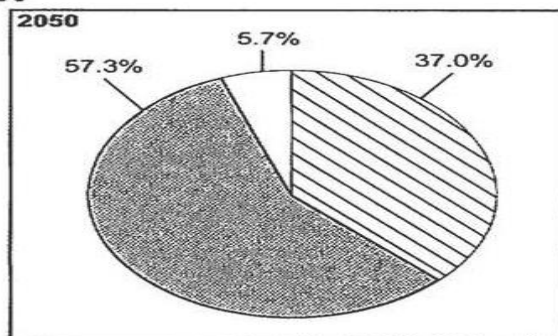
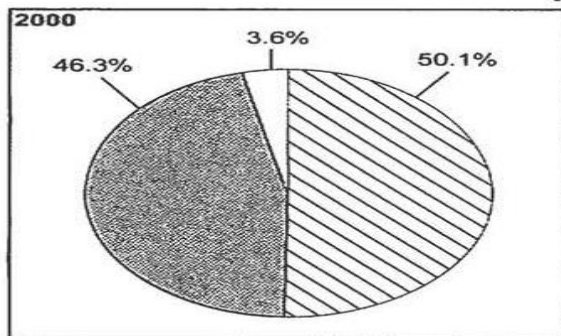
有奖举报热线：4006236898



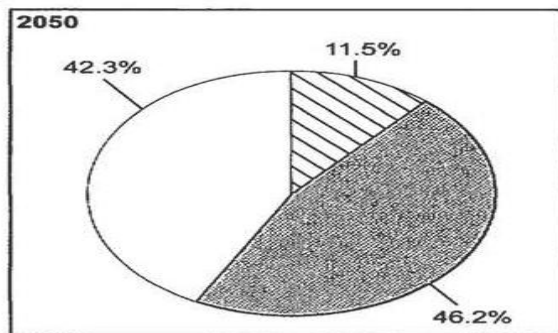
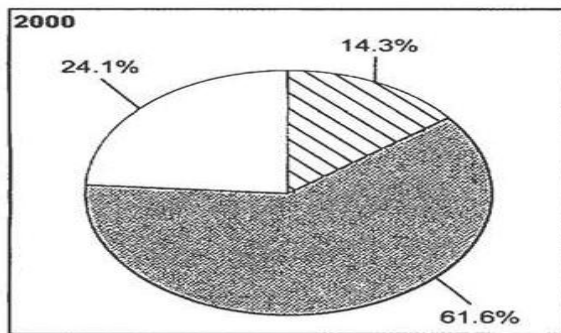
GUIXUE.COM
学 为 贵

学为贵·赢未来

YEMEN



ITALY



0-14 years

15-59 years

60+ years

版权所有 盗版必究

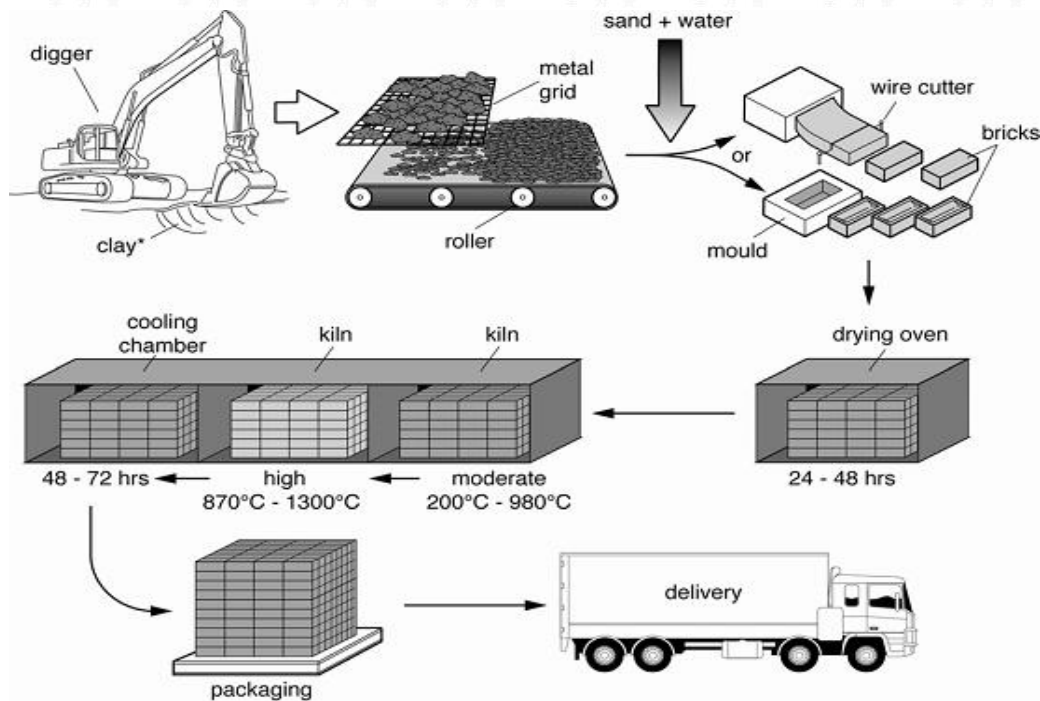
有奖举报热线: 4006236898



GUIXUE.COM
学 为 贵

学为贵·赢未来

流程图



版权所有 盗版必究

有奖举报热线: 4006236898



- The process by which bricks are manufactured for the building industry can be outlined in seven consecutive steps. First the raw material, clay, which was just below the surface of soil in certain clay-rich areas has to be dug up by a digger.
- Then the lumps of clay are placed on a metal grid in order to break up the big chunks of clay into much smaller areas, which fall through the metal grid onto a roller, whose motion further segregates the bits of clay. Sand and water are added to make mixture, which is then either formed in moulds or cut into brick-shaped pieces by means of a wire cutter.



- Those fresh bricks are then kept in a drying oven for at least 24 and a maximum of 48 hours. The dried bricks are then transferred to a so-called kiln, another type of high temperature oven. First they are kept at a moderate temperature of 200°C - 1300°C . This process is followed by cooling down the finished bricks for 48 to 72 hours in a cooling chamber.
- Once the bricks have cooled down and have become hard, they get packaged and delivered to their final destination, be it a building site or storage.



GUIXUE.COM

学为贵

学为贵·赢未来

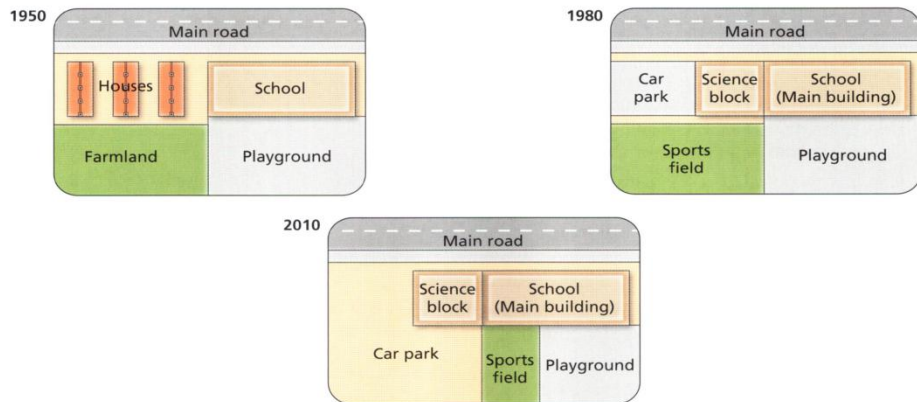
WRITING TASK 1

You should spend about 20 minutes on this task.

The diagrams below show the changes that have taken place at West Park Secondary School since its construction in 1950.

Summarise the information by selecting and reporting the main features and make comparisons where relevant.

Write at least 150 words.



版权所有 盗版必究

有奖举报热线: 4006236898



Writing Task 1

Sample answer

The diagrams show West Park School at three different stages in its development: 1950, 1980 and 2010.

In 1950, the school was built close to a main road and next to a number of houses. A large area behind the school was turned into a playground, while the area behind the houses was farmland.

By 1980, the houses had been demolished in order to make way for a small car park and an additional school building, which became the science block. In addition to the existing playground, the school also gained the farmland and converted it into a sports field.

In 2010, the school building remained unchanged but the car park was extended to cover the entire sports field. As a result of this, the original playground was divided into two so that it provided a smaller playground and a small sports field.

During this period, the school has increased in size and a car park has been created and enlarged. The combined recreational areas, however, first expanded and were then reduced in size.

(174 words)



GUIXUE.COM

学 为 贵

学为贵·赢未来

Thank you!

版权所有 盗版必究

有奖举报热线：4006236898