




P2地图、多选、配对解题方法

Logic and layout of IELTS academic texts and IELTS listening solutions

周璐



目录

CONTENTS

01 P2日常独白结构及考试节奏

02 图形、配对、多选解题方法

03 小结及作业

PART 01



P2日常独白结构及考试节奏

P2地图、多选、配对解题方法

S2独白结构及考试节奏

提高学术能力，顺便过雅思

话题简单

句子结构简单

逻辑简单
Move少

大结构跟P4一样，但TS时有时无，整体内容简单
但做题节奏快：判断→精听

PART 02



图形、多选、配对解题方法

P2地图、多选、配对解题方法

图形题-种类

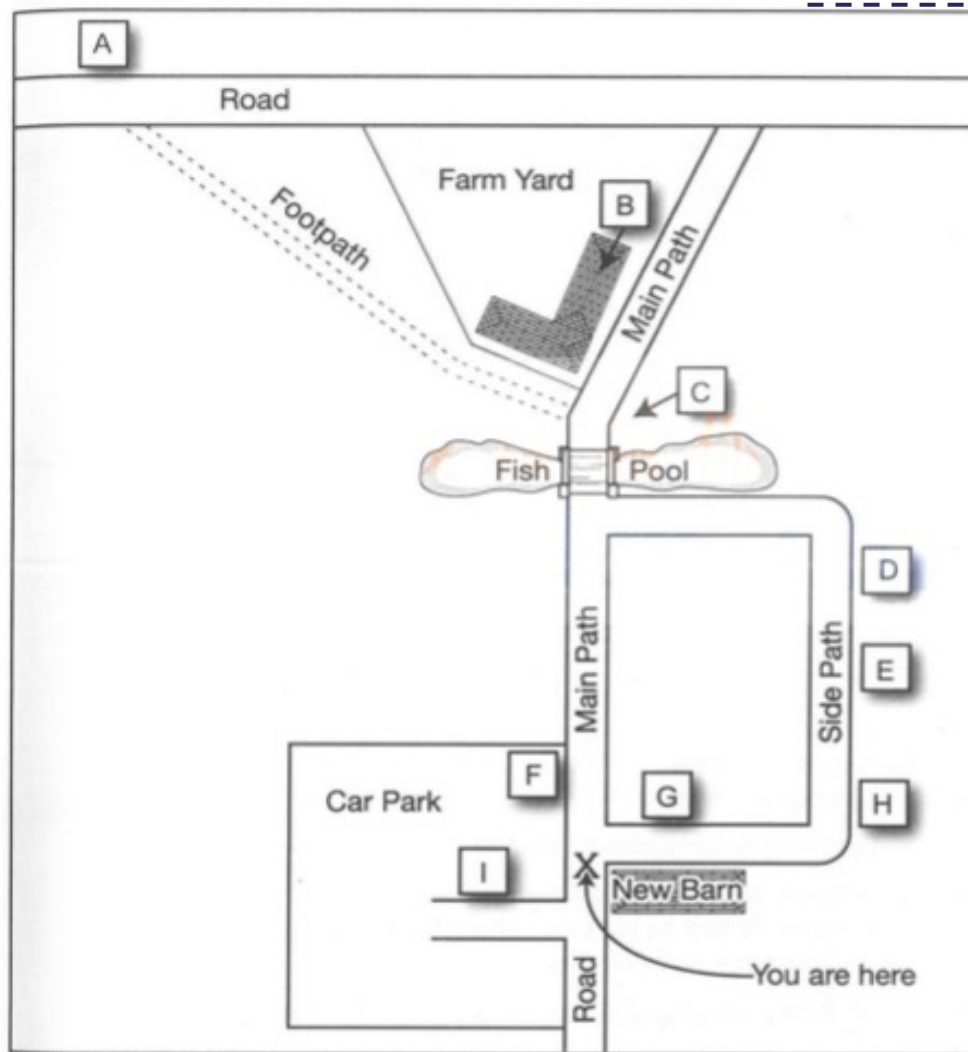
提高学术能力，顺便过雅思

精听

略听

Write the correct letter A-I, next to Questions 15-20.

11-1-2



15 Scarecrow

16 Maze

17 Café

18 Black Barn

19 Covered picnic area

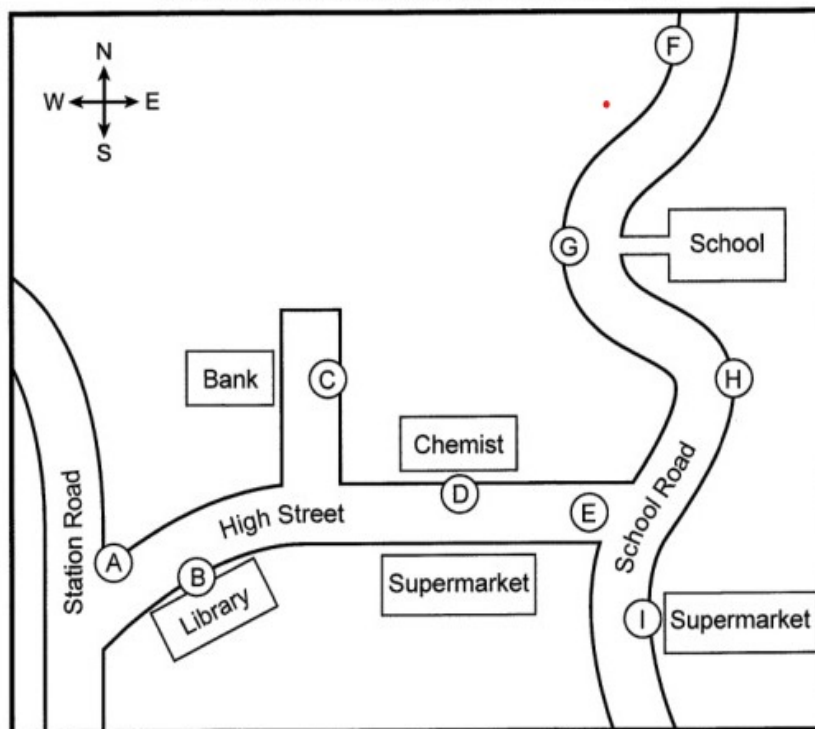
20 Fiddy House

P2地图、多选、配对解题方法

图形题-种类

提高学术能力，顺便过

Proposed traffic changes in Granford



13-1-2

- 14 New traffic lights
- 15 Pedestrian crossing
- 16 Parking allowed
- 17 New 'No Parking' sign
- 18 New disabled parking spaces
- 19 Widened pavement
- 20 Lorry loading/unloading restrictions

图形题-种类

提高学术能力，顺便过雅思

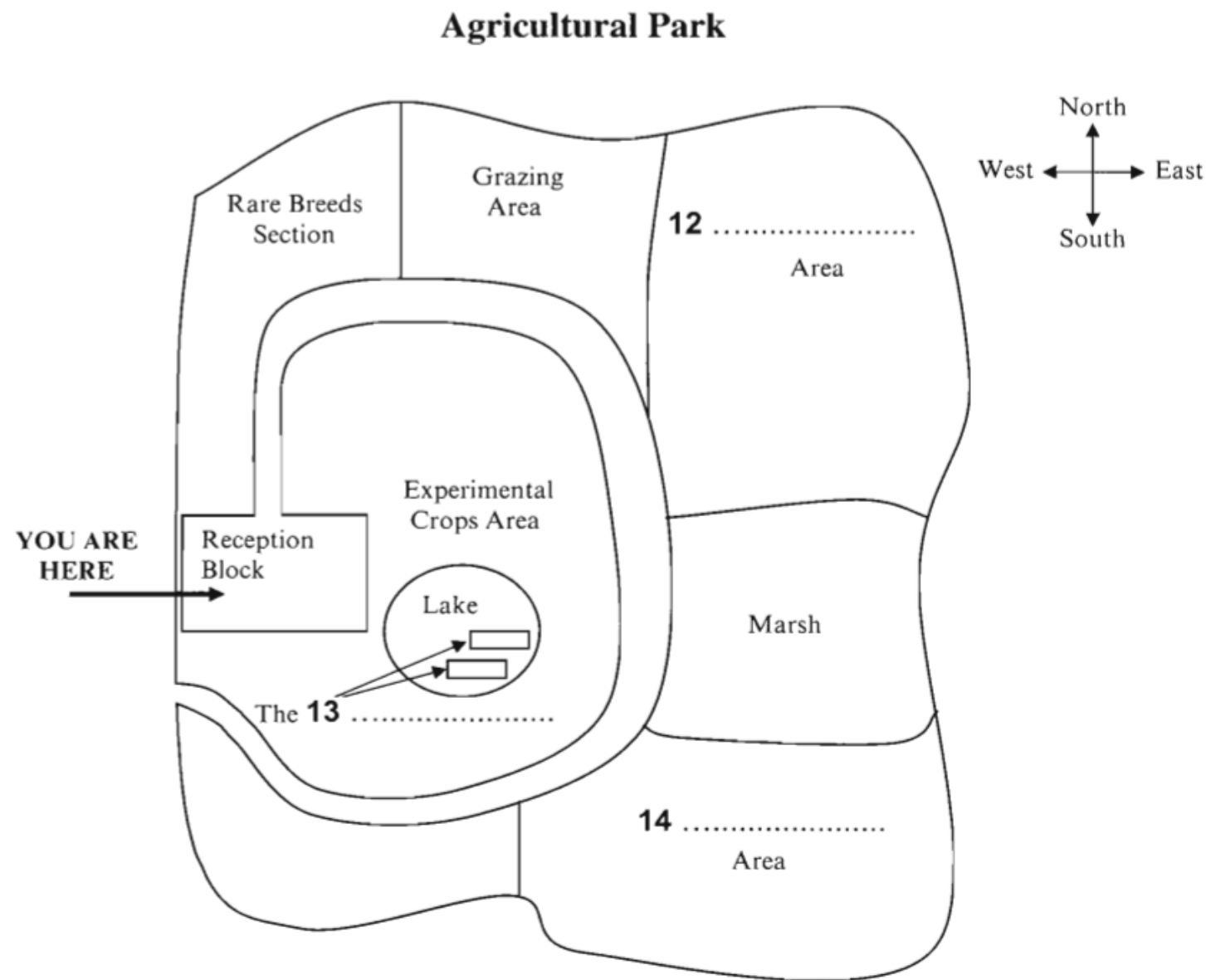
范围：大（带街道名称）→小

题型：配对+填空

读：

- 东西南北坐标 (top, bottom, left, right)
- 地图建筑物名称
- 题干需要定位的建筑物 (配对题)
- 起点

Write **NO MORE THAN TWO WORDS** for each answer.



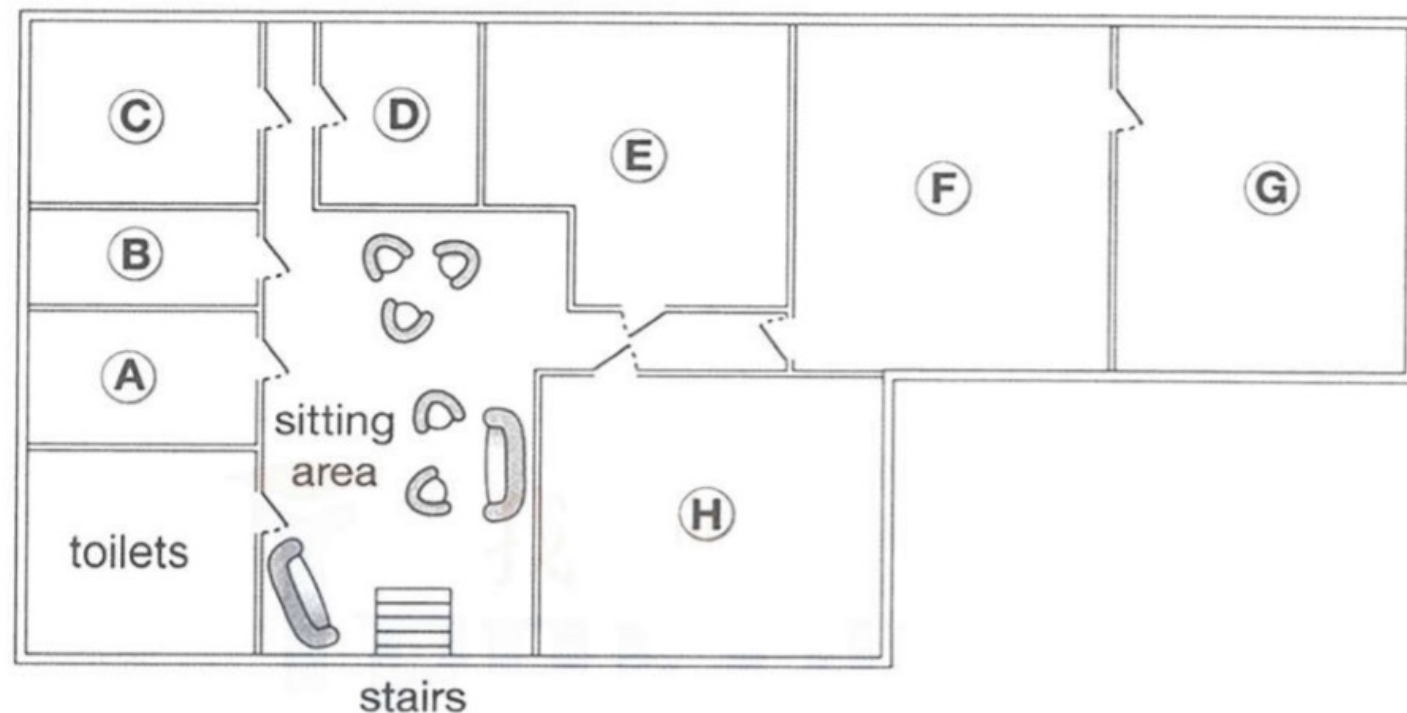
图形题-种类

提高学术能力，顺便过雅思

注意事项：

- 路线、定位不碰词！谁的左右，谁在左右要听清！
- 不脑补意思！让看的就看看，让拐再拐。
- 就近原则，有起点的题目不是每个题目都从起点开始说。
- 一个听不清，马上扔，做下面的题目；
- 眼睛移动要快。
- 配对题，默念单词，熟悉发音。
- 转折move听完，注意力不要收早
- 看地图直接做题，减少来回看的次数

Basement of museum



- | | | |
|----|--------------------------|-------|
| 17 | restaurant | |
| 18 | café | |
| 19 | baby-changing facilities | |
| 20 | cloakroom | |

多选-细化三种题型

提高学术能力，顺便过雅思

读题：

读选项的不同点，快速分析出题点，不好读出题点的题目直接NS做题。做笔记时，注意跳读答题。

听，特别注意：

某些连续两句或多句话精听，节奏快（定精，定精精……），宁可不计也要听全，利用判断出可略听的简短时间记笔记或答题。

a.题点在题干；选项只有名词和名词词组 10-1-2 3:07

Choose **TWO** letters **A–E**.

Which **TWO** facilities at the leisure club have recently been improved?

- A** the gym
- B** the tracks
- C** the indoor pool
- D** the outdoor pool
- E** the sports training for children

多选-细化三种题型

提高学术能力，顺便过雅思

b. 题点在题干；选项是动词短语10-2-3

Which do the speakers say are the **TWO** reasons why Heyerdahl went to live on an island?

- A to examine ancient carvings
- B to experience an isolated place
- C to formulate a new theory
- D to learn survival skills
- E to study the impact of an extreme environment

多选-细化三种题型

提高学术能力，顺便过雅思

c. 选项是长句子10-3-2

Which **TWO** things does Alice say about the Dolphin Conservation Trust?

- A** Children make up most of the membership.
- B** It's the country's largest conservation organisation.
- C** It helps finance campaigns for changes in fishing practices.
- D** It employs several dolphin experts full-time.
- E** Volunteers help in various ways.

配对-细化两种题型

提高学术能力，顺便过雅思

读题：

大题点+小题点

听：

Notes做题。

两种题型的笔记方法：

1. 看题干记笔记；
2. 看选项做笔记。

What does the man say about *the play on each* of the following days?

Choose **FIVE** answers from the box and write correct letter, **A-G**, next to Questions 16–20.

12-6-2 4:42

Comments

- A The playwright will be present.
- B The play was written to celebrate an anniversary.
- C The play will be performed inside a historic building.
- D The play will be accompanied by live music.
- E The play will be performed outdoors.
- F The play will be performed for the first time.
- G The performance will be attended by officials from the town.

Days

- 16 Wednesday
- 17 Thursday
- 18 Friday
- 19 Saturday
- 20 Monday

配对-细化两种题型

提高学术能力，顺便过雅思

10-3-2

Dolphins

- A Moondancer
- B Echo
- C Kiwi
- D Samson

Comments

- 16 It has not been seen this year.
- 17 It is photographed more than the others.
- 18 It is always very energetic.
- 19 It is the newest one in the scheme.
- 20 It has an unusual shape.

PART 03



小结和作业

P2地图、多选、配对解题方法

小结

提高学术能力，顺便过雅思

本节复习重点：

1. P2做题节奏。集中1天刷完所有剑4-10，P2题目，反思错误原因。
2. 地图题强化练习方法：AI。

整体复习重点：

1. TAS/NS打卡不停。
2. 刷题：找做题节奏，单个PART 刷做题方法+整套模考。
3. 精细化复习，分析错误原因：《错题五问》！



作业

提高学术能力，顺便过雅思

日常作业：TAS/NS+同义词作业+打卡（每周一三五）。