

腾讯课堂独家直播

7/26/2022

欢迎参加 腾讯课堂 何琼雅思听力课

看到这个画面说明显示正常，
设备调试中，**七点**开始准时上课

何琼雅思原创课件 课程主页heqiong.ke.qq.com 微信heqiongyasi 微博@何琼J

1

腾讯课堂独家直播

7/26/2022

2022年 何琼雅思听力课

请到腾讯课堂搜索 何琼 直达报名地址

何琼

何琼雅思原创课件 课程主页heqiong.ke.qq.com 微信heqiongyasi 微博@何琼J

2

腾讯课堂独家直播

7/26/2022

课表提醒：

课程提供的内容分为四大类，12小时直播课，六次作业讲解与难点答疑，两次听力模考含讲解和全程贴心一对一QQ老师亲自答疑。
有课程报名相关问题欢迎咨询老师私人微信：heqiongyasi。
课程回放有效期四个月，有效期内可以随意观看，充分学习。

还没进群
微信联系

7月25日	周一	上课前	作业讲解和难点提醒	何琼听力学员内部QQ群
7月25日	周一	19:00-21:00	雅思听力单选题的做题方法和蒙题技巧	腾讯课堂直播教室
7月26日	周二	上课前	作业讲解和难点提醒	何琼听力学员内部QQ群
7月26日	周二	19:00-21:00	雅思听力全盘复习和考点梳理	腾讯课堂直播教室
7月27日	周三	作业讲解、听力模考1和讲解		何琼听力学员内部QQ群
7月28日	周四	听力模考2和讲解		何琼听力学员内部QQ群
报名听课半年内		课后何老师个性化针对性答疑		QQ

何琼雅思原创课件 课程主页heqiong.ke.qq.com 微信heqiongyasi 微博@何琼J

3

腾讯课堂独家直播

7/26/2022

腾讯课堂学习地址：

<https://ke.qq.com/course/5508549>

手机或平板下载app网页链接

<https://ke.qq.com/download/app.html>

windows系统电脑请通过此链接下载腾讯课堂听课客户端

<https://ke.qq.com/download/pcapp.html#isWin=1>

苹果mac系统电脑请通过此链接下载腾讯课堂听课mac客户端

<https://ke.qq.com/download/macapp.html>

何琼雅思原创课件 课程主页heqiong.ke.qq.com 微信heqiongyasi 微博@何琼J

4

腾讯课堂独家直播

7/26/2022

请注意：

- 接下来**群里仍有复习提醒和带练内容**，都很重要
- 请**持续关注**学员QQ群
- 不在群里的本期课学员请加**微信 heqiongyasi** 联系进群
- 课程独家学习地址请到**腾讯课堂**搜“何琼”
- **你的**宝贵时间不容浪费

何琼雅思原创课件 课程主页heqiong.ke.qq.com 微信heqiongyasi 微博@何琼J

5

腾讯课堂独家直播

7/26/2022

请注意：



何琼雅思原创课件 课程主页heqiong.ke.qq.com 微信heqiongyasi 微博@何琼J

6

腾讯课堂独家直播

7/26/2022

逻辑连接词：

并列： and, also, as well as, then, another, anything else? is that all?

对比： at the same time

顺序： firstly, then, after that, lastly, finally...

解释说明： I mean, this means, in other words

何琼雅思原创课件 课程主页heqiong.ke.qq.com 微信heqiongyasi 微博@何琼J

7

腾讯课堂独家直播

7/26/2022

逻辑连接词：

举例： such as, like, for example

转折： but, however, all of a sudden, whereas

因果： because, since, so, therefore

强调： in fact, actually, especially, do + v. , of course, important

插入语： let me see, you know...

新话题： now, anyway

补充： oh, hang on, wait a minute

何琼雅思原创课件 课程主页heqiong.ke.qq.com 微信heqiongyasi 微博@何琼J

8

腾讯课堂独家直播

7/26/2022

测试：

并列：

对比：

顺序：

解释说明：

请到腾讯课堂搜索 何琼 直达听课地址

何琼雅思原创课件 课程主页heqiong.ke.qq.com 微信heqiongyasi 微博@何琼J

9

腾讯课堂独家直播

7/26/2022

赴考前细节

请到腾讯课堂搜索 何琼 直达听课地址

- 维持常态
- 平稳发挥
- 舒服松弛
- 提前检查

何琼雅思原创课件 课程主页heqiong.ke.qq.com 微信heqiongyasi 微博@何琼J

10

腾讯课堂独家直播

7/26/2022

赴考前细节

请到腾讯课堂搜索 何琼 直达听课地址

- 出发时间
- 体温
- 口罩（备用）
- 口语考试时间和准考证要求
- 照相
- 饮食作息调整
- 守护人品

何琼雅思原创课件 课程主页heqiong.ke.qq.com 微信heqiongyasi 微博@何琼J

11

腾讯课堂独家直播

7/26/2022

如何挤时间读题？

腾讯课堂独家直播 微博@何琼J 微信heqiongyasi

- 翻看剑11第80页
- 然后拿物品夹上
- 合上书

何琼雅思原创课件 课程主页heqiong.ke.qq.com 微信heqiongyasi 微博@何琼J

12

挤时间规则

- Now turn to Part 1开始看题
- 第一部分例子已取消
- 可以任意看四个部分
- 题目选项尽量都看
- 边看边画圈预判
- 每个部分按题号顺序看
- 注意我说的时间点
- 第三部分最难建议挤时间提前看

何琼雅思原创课件 课程主页heqiong.ke.qq.com 微信heqiongyasi 微博@何琼J

13

注意：

- 不可能记得住，只能做标注
- 关键还是提升正确率
- 单词+发音+语法是读题速度基础
- 定位是王道

何琼雅思原创课件 课程主页heqiong.ke.qq.com 微信heqiongyasi 微博@何琼J

14

Test 4

7/26/2022

LISTENING

SECTION 1 Questions 1–10

Questions 1–7

Complete the table below.

Write **ONE WORD AND/OR A NUMBER** for each answer

Event	Cost	Venue	Notes
Jazz band	<i>Example</i> Tickets available for £ 15	The 1 school	Also appearing: Carolyn Hart (plays the 2)
Duck races	£1 per duck	Start behind the 3	Prize: tickets for 4 held at the end of the festival. Ducks can be bought in the 5
Flower show	Free	6 Hall	Prizes presented at 5 pm by a well-known 7

何琼雅思原创课件 课程主页heqiong.ke.qq.com 微信heqiongyasi 微博@何琼J

15

7/26/2022

Questions 8–10

Who is each play suitable for?

Write the correct letter, **A, B or C**, next to Questions 8–10.

- | |
|--|
| A mainly for children
B mainly for adults
C suitable for people of all ages |
|--|

Plays

- 8 The Mystery of Muldoon
- 9 Fire and Flood
- 10 Silly Sailor

何琼雅思原创课件 课程主页heqiong.ke.qq.com 微信heqiongyasi 微博@何琼J

16

SECTION 2 Questions 11–20**Questions 11–16**

What does the speaker say about each of the following collections?

Choose **SIX** answers from the box and write the correct letter, **A–G**, next to Questions 11–16.

Comments	
A	was given by one person
B	was recently publicised in the media
C	includes some items given by members of the public
D	includes some items given by the artists
E	includes the most popular exhibits in the museum
F	is the largest of its kind in the country
G	has had some of its contents relocated

Collections

- 11 20th- and 21st-century paintings
- 12 19th-century paintings
- 13 Sculptures
- 14 'Around the world' exhibition
- 15 Coins
- 16 Porcelain and glass

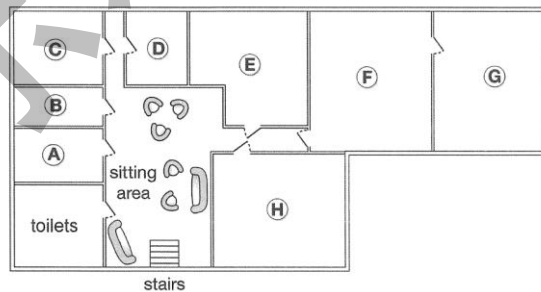
何琼雅思原创课件 课程主页heqiong.ke.qq.com 微信heqiongyasi 微博@何琼J

17

Questions 17–20

Label the plan below.

Write the correct letter, **A–H**, next to Questions 17–20.

Basement of museum

- 17 restaurant
- 18 café
- 19 baby-changing facilities
- 20 cloakroom

何琼雅思原创课件 课程主页heqiong.ke.qq.com 微信heqiongyasi 微博@何琼J

18

腾讯课堂独家直播

7/26/2022

SECTION 3 Questions 21–30*Questions 21 and 22**Choose TWO letters, A–E.*Which **TWO** characteristics were shared by the subjects of Joanna's psychology study?

- A They had all won prizes for their music.
- B They had all made music recordings.
- C They were all under 27 years old.
- D They had all toured internationally.
- E They all played a string instrument.

*Questions 23 and 24**Choose TWO letters, A–E.*Which **TWO** points does Joanna make about her use of telephone interviews?

- A It meant rich data could be collected.
- B It allowed the involvement of top performers.
- C It led to a stressful atmosphere at times.
- D It meant interview times had to be limited.
- E It caused some technical problems.

*Questions 25 and 26**Choose TWO letters, A–E.*Which **TWO** topics did Joanna originally intend to investigate in her research?

- A regulations concerning concert dress
- B audience reactions to the dress of performers
- C changes in performer attitudes to concert dress
- D how choice of dress relates to performer roles
- E links between musical instrument and dress choice

何琼雅思原创课件 课程主页heqiong.ke.qq.com 微信heqiongyasi 微博@何琼J

19

腾讯课堂独家直播

7/26/2022

*Questions 27–30**Choose the correct letter, A, B or C.*

27 Joanna concentrated on women performers because

- A women are more influenced by fashion.
- B women's dress has led to more controversy.
- C women's code of dress is less strict than men's.

28 Mike Frost's article suggests that in popular music, women's dress is affected by

- A their wish to be taken seriously.
- B their tendency to copy each other.
- C their reaction to the masculine nature of the music.

29 What did Joanna's subjects say about the audience at a performance?

- A The musicians' choice of clothing is linked to respect for the audience.
- B The clothing should not distract the audience from the music.
- C The audience should make the effort to dress appropriately.

30 According to the speakers, musicians could learn from sports scientists about

- A the importance of clothing for physical freedom.
- B the part played by clothing in improving performance.
- C the way clothing may protect against physical injury.

何琼雅思原创课件 课程主页heqiong.ke.qq.com 微信heqiongyasi 微博@何琼J

20

SECTION 4 Questions 31–40

Complete the notes below.

Write **ONE WORD ONLY** for each answer.

The use of soil to reduce carbon dioxide (CO₂) in the atmosphere

Rattan Lal:

- Claims that 13% of CO₂ in the atmosphere could be absorbed by agricultural soils
- Erosion is more likely in soil that is **31**
- Lal found soil in Africa that was very **32**
- It was suggested that carbon from soil was entering the atmosphere

Soil and carbon:

- plants turn CO₂ from the air into carbon-based substances such as **33**
- some CO₂ moves from the **34** of plants to microbes in the soil
- carbon was lost from the soil when agriculture was invented

何琼雅思原创课件 课程主页heqiong.ke.qq.com 微信heqiongyasi 微博@何琼J

21

Regenerative agriculture:

- uses established practices to make sure soil remains fertile and **35**
- e.g. through year-round planting and increasing the **36** of plants that are grown

California study:

- taking place on a big **37** farm
- uses compost made from waste from agriculture and **38**

Australia study:

- aims to increase soil carbon by using **39** that are always green

Future developments may include:

- reducing the amount of fertilizer used in farming
- giving farmers **40** for carbon storage, as well as their produce

何琼雅思原创课件 课程主页heqiong.ke.qq.com 微信heqiongyasi 微博@何琼J

22

腾讯课堂独家直播

7/26/2022

Which **TWO** characteristics were shared by the subjects of Joanna's psychology study?

- A They had all won prizes for their music.
- B They had all made music recordings.
- C They were all under 27 years old.
- D They had all toured internationally.
- E They all played a string instrument.

SUPERVISOR: Hi, Joanna, good to meet you. Now, before we discuss your new research project, I'd like to hear something about the psychology study you did last year for your Master's degree. So how did you choose your subjects for that?

JOANNA: Well, I had six subjects, all professional musicians, and all female. Three were violinists and there was also a cello player and a pianist and a flute player. They were all very highly regarded in the music world and they'd done quite extensive tours in different continents, and quite a few had won prizes and competitions as well. Q21 & 22

120

SUPERVISOR: And they were quite young, weren't they?

JOANNA: Yes, between 25 and 29 – the mean was 27.8. I wasn't specifically looking for artists who'd produced recordings, but this is something that's just taken for granted these days, and they all had. Q21 & 22

何琼雅思原创课件 课程主页heqiong.ke.qq.com 微信heqiongyasi 微博@何琼J

23

腾讯课堂独家直播

7/26/2022

Which **TWO** points does Joanna make about her use of telephone interviews?

- A It meant rich data could be collected.
- B It allowed the involvement of top performers.
- C It led to a stressful atmosphere at times.
- D It meant interview times had to be limited.
- E It caused some technical problems.

SUPERVISOR: Right. Now you collected your data through telephone interviews, didn't you?

JOANNA: Yes. I realised if I was going to interview leading musicians it'd only be possible over the phone because they're so busy. I recorded them using a telephone recording adaptor. I'd been worried about the quality, but it worked out all right. I managed at least a 30-minute interview with each subject, sometimes longer. Q23 & 24

SUPERVISOR: Did doing it on the phone make it more stressful?

JOANNA: I'd thought it might ... it was all quite informal though and in fact they seemed very keen to talk. And I don't think using the phone meant I got less rich data, rather the opposite in fact. Q23 & 24

何琼雅思原创课件 课程主页heqiong.ke.qq.com 微信heqiongyasi 微博@何琼J

24

腾讯课堂独家直播

7/26/2022

Which **TWO** topics did Joanna originally intend to investigate in her research?

- A regulations concerning concert dress
- B audience reactions to the dress of performers
- C changes in performer attitudes to concert dress
- D how choice of dress relates to performer roles
- E links between musical instrument and dress choice

SUPERVISOR: Interesting. And you were looking at how performers dress for concert performances?

JOANNA: That's right. My research investigated the way players see their role as a musician and how this is linked to the type of clothing they decide to wear. But that focus didn't emerge immediately. When I started I was more interested in trying to investigate the impact of what was worn on those listening, and also whether someone like a violinist might adopt a different style of clothing from, say, someone playing the flute or the trumpet.

Q25 & 26

Q25 & 26

SUPERVISOR: It's interesting that the choice of dress is up to the individual, isn't it?

JOANNA: Yes, you'd expect there to be rules about it in orchestras, but that's quite rare.

何琼雅思原创课件 课程主页heqiong.ke.qq.com 微信heqiongyasi 微博@何琼J

25

腾讯课堂独家直播

7/26/2022

抓重点 不钻牛角尖：

8967165+2598739=?

何琼雅思原创课件 课程主页heqiong.ke.qq.com 微信heqiongyasi 微博@何琼J

26

腾讯课堂独家直播

7/26/2022

腾讯课堂独家直播 微博@何琼J 微信heqiongyasi

题号	定位	答案	翻译理解
21			
22			
23			
24			
25			
26			

误导选项错在哪里：

何琼雅思原创课件 课程主页heqiong.ke.qq.com 微信heqiongyasi 微博@何琼J

27

腾讯课堂独家直播

7/26/2022

抓重点 不钻牛角尖：

$$8967165 + 2598739 = ?$$

A. 11565904

B. 11768083

C. 11839206



何琼雅思原创课件 课程主页heqiong.ke.qq.com 微信heqiongyasi 微博@何琼J

28

6-1-4:**Questions 38-40**Choose **THREE** letters, A-G.

腾讯课堂独家直播 微博@何琼J 微信heqiongyasi

Which **THREE** of the following problems are mentioned in connection with 20th century housing in the East End?

- A unsympathetic landlords
- B unclean water
- C heating problems
- D high rents
- E overcrowding
- F poor standards of building
- G houses catching fire

何琼雅思原创课件 课程主页heqiong.ke.qq.com 微信heqiongyasi 微博@何琼J

29

6-1-4:

That brief outline takes us to the beginning of the twentieth century, and now we'll turn to housing.

腾讯课堂独家直播 微博@何琼J 微信heqiongyasi

At the beginning of the century, living conditions for the majority of working people in East London were very basic indeed. Houses were crowded closely together and usually very badly built, because there was no regulation. But the poor and needy were attracted by the possibility of work, and they had to be housed. It was the availability, rather than the condition, of the housing that was the major concern for tenants and landlords alike. Q38/39/40

Few houses had electricity at this time, so other sources of power were used, like coal for the fires which heated perhaps just one room. Of course, the smoke from these contributed a great deal to the air pollution for which London used to be famous. Q38/39/40

A tiny, damp, unhealthy house like this might well be occupied by two full families, possibly including several children, grandparents, aunts and uncles. Q38/39/40

Now, before I go on to health implications of this way of life, I'll say something about food and nutrition.

何琼雅思原创课件 课程主页heqiong.ke.qq.com 微信heqiongyasi 微博@何琼J

30

9-4-1:

The Shore Lane Health Centre	Dr 4	
------------------------------	------------	--

Questions 5–6

Choose **TWO** letters, **A–E**.

Which **TWO** of the following are offered free of charge at Shore Lane Health Centre?

- A acupuncture
- B employment medicals
- C sports injury therapy
- D travel advice
- E vaccinations

何琼雅思原创课件 课程主页heqiong.ke.qq.com 微信heqiongyasi 微博@何琼J

31

9-4-1:

WOMAN:

Erm ... there are usually some small charges that doctors make. Let me see what it says about the Shore Lane Centre. If you need to be vaccinated before any trips abroad, you won't have to pay for this. Erm, what else? The sports injury treatment service operates on a paying basis, as does the nutritional therapy service. Some health centres do offer alternative therapies like homeopathy as part of their pay-to-use service. Shore Lane are hoping to do this soon – I think they may start with acupuncture. And finally, if you need to prove you're healthy or haven't had any serious injuries before a new employer will accept you, you can get a free fitness check-up there, but you'd most likely have to pay for insurance medicals though.

MAN:

Okay, thanks.

何琼雅思原创课件 课程主页heqiong.ke.qq.com 微信heqiongyasi 微博@何琼J

32

腾讯课堂独家直播

7/26/2022

复习要点:

腾讯课堂独家直播 微博@何琼J 微信heqiongyasi

1. 一天练一套题
2. 注意合理安排时间读题
3. 填空题重点总结错题
4. 其他题建议有时间全部总结
5. 找定位
6. 理解单词或者句子改写
7. 多抄多背课堂资料
8. 看课程回放

何琼雅思原创课件 课程主页heqiong.ke.qq.com 微信heqiongyasi 微博@何琼J

33

腾讯课堂独家直播

7/26/2022

复习要点:

腾讯课堂独家直播 微博@何琼J 微信heqiongyasi

- 复习不要只看自我感觉
- 只要找老师，都能发现问题
- 找老师解决问题才能真进步
- 必考词汇不能松懈

何琼雅思原创课件 课程主页heqiong.ke.qq.com 微信heqiongyasi 微博@何琼J

34

腾讯课堂独家直播

7/26/2022

叮嘱：

不要在同样的问题上犯错，
人生有限，要抓紧时间，
在不同问题上犯错。

何琼雅思原创课件 课程主页heqiong.ke.qq.com 微信heqiongyasi 微博@何琼J

35

腾讯课堂独家直播

7/26/2022

葡萄成熟时：

你要静候再静候
就算失收始终要守
日后尽量别教今天的泪白流
留低击伤你的石头
从错误里吸收



日后 尽量别教今天的泪白流

——「葡萄成熟时」

何琼雅思原创课件 课程主页heqiong.ke.qq.com 微信heqiongyasi 微博@何琼J

36

腾讯课堂独家直播

7/26/2022

叮嘱：

知道 ≠ 做到

何琼雅思原创课件 课程主页heqiong.ke.qq.com 微信heqiongyasi 微博@何琼J

37

腾讯课堂独家直播

7/26/2022

复习重点：

腾讯课堂独家直播 微博@何琼J 微信heqiongyasi

简单粗暴保底线
精致谨慎追高分

何琼雅思原创课件 课程主页heqiong.ke.qq.com 微信heqiongyasi 微博@何琼J

38

腾讯课堂独家直播

结课测验

10-3-2

P.59

7/26/2022

Questions 16–20

Which dolphin does Alice make each of the following comments about?

Write the correct letter, **A, B, C or D**, next to questions 16–20.

Dolphins

- A** Moondancer
B Echo
C Kiwi
D Samson

Comments

- 16** It has not been seen this year.
17 It is photographed more than the others.
18 It is always very energetic.
19 It is the newest one in the scheme.
20 It has an unusual shape.

何琼雅思原创课件 课程主页heqiong.ke.qq.com 微信heqiongyasi 微博@何琼J

39

腾讯课堂独家直播

结课测验

10-3-2

P.59

7/26/2022

INTERVIEWER:

I'm sure our listeners will want to find out what they can do to help. You mentioned the 'Adopt a Dolphin' scheme. Can you tell us about that?

ALICE:

Of course! People can choose one of our dolphins to sponsor. They receive a picture of it and news updates. I'd like to tell you about four which are currently being adopted by our members: Moondancer, Echo, Kiwi and Samson. Unfortunately, Echo is being rather elusive this year and hasn't yet been sighted by our observers but we remain optimistic that he'll be out there soon. All the others have been out in force – Samson and Moondancer are often photographed together but it is Kiwi who's our real 'character' as she seems to love coming up close for the cameras and we've captured her on film hundreds of times. They all have their own personalities – Moondancer is very elegant and curves out and into the water very smoothly, whereas Samson has a lot of energy – he's always leaping out of the water with great vigour. You'd probably expect him to be the youngest – he's not quite – that's Kiwi – but Samson's the latest of our dolphins to be chosen for the scheme. Kiwi makes a lot of noise so we can often pick her out straightaway. Echo and Moondancer are noisy too, but Moondancer's easy to find because she has a particularly large fin on her back, which makes her easy to identify. So, yes, they're all very different... Q16 Q17 Q18 Q19 Q20

INTERVIEWER:

Well, they sound a fascinating group ...

何琼雅思原创课件 课程主页heqiong.ke.qq.com 微信heqiongyasi 微博@何琼J

40

腾讯课堂独家直播

7/26/2022

请注意：

- 接下来**群里仍有复习提醒和带练内容**，都很重要
- 请**持续关注学员QQ群**
- 不在群里的本期课学员请加**微信 heqiongyasi** 联系进群
- 课程独家学习地址请到**腾讯课堂**搜“何琼”
- **你的宝贵时间不容浪费**

何琼雅思原创课件 课程主页heqiong.ke.qq.com 微信heqiongyasi 微博@何琼J

41

腾讯课堂独家直播

7/26/2022

课表提醒：

课程提供的内容分为四大类，12小时直播课，六次作业讲解与难点答疑，两次听力模考含讲解和全程贴心一对一QQ老师亲自答疑。
有课程报名相关问题欢迎咨询老师私人微信：**heqiongyasi**。
课程回放有效期四个月，有效期内可以随意观看，充分学习。

还没进群
微信联系

7月25日	周一	上课前	作业讲解和难点提醒	何琼听力 学员内部QQ群
7月25日	周一	19:00-21:00	雅思听力单选题的做题方法和蒙题技巧	腾讯课堂 直播教室
7月26日	周二	上课前	作业讲解和难点提醒	何琼听力 学员内部QQ群
7月26日	周二	19:00-21:00	雅思听力全盘复习和考点梳理	腾讯课堂 直播教室
7月27日	周三	作业讲解、听力模考1和讲解		何琼听力 学员内部QQ群
7月28日	周四	听力模考2和讲解		何琼听力 学员内部QQ群
报名听课半年内		课后何老师个性化针对性答疑		QQ

何琼雅思原创课件 课程主页heqiong.ke.qq.com 微信heqiongyasi 微博@何琼J

42