



# 智课网

SmartStudy.com

我们都在这，你还要去哪学？

五大出国考试各科首席专家齐聚SmartStudy

# 严 威

# GMAT逻辑

5 大出国考试

36 门超级系统课程

20 大热门教材与官方题库

56 位首席讲师系统讲解

500 小时精品课程

7000 个题目

68 位哈佛耶鲁哥大老师逐题精讲

2620 个知识点与考点

4000 个小时逐题精讲

在线课堂 顶级名师 电影级别的超清课程 智能学习管理 系统课程 逐题精讲

中国最权威的出国考试学习平台

[www.smartstudy.com](http://www.smartstudy.com)

中国最权威的出国考试线上学习平台



**智课网**  
SmartStudy.com

**上智课网，听出国考试最强师资课程！**

五大出国考试各科首席讲师齐聚SmartStudy

**5** 大出国考试

**36** 门超级系统课程

**20** 大热门教材与官方题库

**56** 位首席讲师系统讲解

**500** 小时精品课程

**7000** 个题目

**68** 位哈佛耶鲁哥大老师逐题精讲

**2620** 个知识点与考点

**4000** 个小时逐题精讲

在线课堂 顶级名师团队 基于知识点的系统课程 逐题精讲 影视级课程大片 智能学习进程管理

[www.smartstudy.com](http://www.smartstudy.com)



任何一个教育机构和教育平台，要想保障学生的学习结果，最重要的因素就是权威的专家提供的高质量的课程和教学内容研发以及对学生严密的学习过程管理。教学专家和教学内容研发是核心，师资不在于多，而在于都是各个方向真正的学术权威，这和医院里强调医学权威是一样的道理，教育和医疗这两个行业在我心中是最特殊的，他们都依靠真正权威的专家用责任心和良知，配合先进的科技工具，去指导和服务人，孩子们的前途和性命掌握在他们的手里，SmartStudy就是这样的一个平台，中国最权威的5大出国考试教学专家、首席讲师，通过创新的技术运用，系统的知识切片研发和高质量的逐题精讲内容研发，来指导千千万万的学生和家庭，SmartStudy把同学们的前途永远扛在肩上。

---韦晓亮 智课网 (SmartStudy) 联合创始人 CEO&CIO

## 智课网是中国最权威的出国考试线上学习平台 因为...

智课网 (SmartStudy)，中国最权威的出国考试线上学习平台。

智课网 (SmartStudy) 是在线教育领域为数不多的“能够聚集起行业顶级教学专家、以高质量深度内容研发和系统知识切片为核心，融合先进的用于用户行为分析的数据挖掘算法，同时又精于在线学习产品体验设计和学习体验设计”的B2C在线学习平台。是由原新东方高管韦晓亮、翟少成与许国璋英语基金会联合创办，集结了中国托福、雅思、SAT、GRE、GMAT五大出国考试最权威的各科首席教学专家和来自哈佛、耶鲁、哥大等世界名校的全职教学内容研发教师，为用户提供“顶级专家系统课程”与热门教材题库“逐题精讲学习视频库”的在线课程。

智课网所有课程均严格按照系统的知识切片，全面覆盖五大出国考试所有考点，为用户提供500小时影视级别拍摄的专家精品课程，4000小时逐题精讲学习视频“库”，覆盖5大出国留学考试2620个知识点与考点，学习者无论是首次学习还是之后的有针对性的复习，都有了很科学的“知识图谱”作为基础，同时也为数据挖掘的应用提供了前提，可以追踪到学生在某一个具体的知识点的学习行为的各类参数，从而最终匹配这个点的学习效率和效果。

对于智课网 (SmartStudy) 而言，仅有权威的专家团队、专业的教学内容研发还不够，智课网还要为用户打造最极致的在线学习体验。所有专家课程由拍摄团队以纪录片的手法拍摄制作。影视级别的课程品质，高度交互的播放中心，中英文同步字幕，智能电子讲义，为学习者提供比现场更加出色的学习体验。

智课网 (SmartStudy) 为每个用户打造了个性化的“学习管理中心”，给用户个性化的学习方案和备考计划推送，科学管理学员的学习进程，同时融合了先进的数据挖掘算法的学习行为分析系统让整个智课网的学习计划推送以及学习进程管理会根据用户在平台上的各类学习行为形成自适应的调整。智课网CEO韦晓亮认为，“要想保障学员的学习结果，必须监督和引导学员的学习过程和学习习惯。”

根据用户不同的需求，智课网 (SmartStudy) 为用户提供五大出国考试的线上“单项提分课程、全程提分课程、精讲精练课程、考霸课程、直通车产品与VIP年卡会员”等多种在线学习方案。与传统线下培训相比，智课网让用户充分体验“品质远远高于线下”但“价格远远低于线下”的线上学习模式。

从今天起，学习进入SmartStudy时代。





翟少成

智课网 (SmartStudy) 联合创始人, 极智批改 (SmartPigai) 联合创始人。国外考试教学专家, GRE阅读, GMAT阅读, TOEFL口语教学权威。新东方批改网创始人。毕业于南京大学国际商学院。曾获得南京大学国际商学院最高奖学金“曙明奖学金”。在新东方的13年教学生涯中怀着对解密国外考试的浓厚兴趣不断钻研, 形成了一套独特的方法论, 成功地帮助数十万中国学生在GRE, GMAT和托福中取得高分, 飞越重洋实现了自己的留学梦想。

许国璋

#### 许国璋英语基金会

许国璋英语基金会是许国璋先生家人及北京外国语学院共同创建的英语基金会。其宗旨是鼓励中国英语教学者从事研究与交流工作; 奖励在英语教学、研究或学习中表现优异的教师以及学生, 促进中国英语教育事业的发展。



韦晓亮

智课网 (SmartStudy) 联合创始人, 极智批改 (SmartPigai) 联合创始人, CEO兼CIO, 首席产品及内容架构师, 负责SmartStudy平台的架构设计与教学内容研发标准化、负责SmartStudy平台的数据挖掘算法和用户行为分析系统的设计。国内GRE写作、GMAT写作教学体系的搭建者, 首席讲师, 出版各类出国考试类书籍7本。前新东方前途出国咨询公司总裁助理, 曾任新东方留学直通车项目管理中心高级经理, 留留学网创始人、总监。毕业于西安交通大学, 系统工程研究所, 研究方向: 人工智能、机器学习, 数据挖掘算法, 机器人视觉跟踪技术, 发表论文4篇, 其中SCI检索2篇, EI检索1篇, IEEE国际会议论文1篇。

出版物:

《GRE作文大讲堂 - 方法、素材、题目剖析》  
《GMAT写作论证论据素材大全》  
《GRE写作论证论据素材大全》  
《TOEFL写作/口语论证论据素材大全》  
《IELTS写作论证论据素材大全》  
《SAT写作论证论据素材大全》  
《海外校园大使随笔集》  
《智能系统》(集体译著)

## 专家课程

五大出国考试首席讲师  
倾心打造顶级出国课程  
名师一点胜过庸师百万

### TOEFL 托福考试教学权威齐聚智课网



### IELTS 雅思考试教学权威齐聚智课网



## GRE GRE考试教学权威齐聚智课网



## SAT SAT考试教学权威齐聚智课网



## GMAT GMAT考试教学权威齐聚智课网



## 留学申请指导与文书写作专家齐聚智课网





## 逐题精讲

全球顶级名校高分得主  
各大热门教材逐题精讲  
学习练习讲解三位一体

TOEFL



IELTS





## GRE



## GMAT



## SAT



# 严崴 GMAT逻辑



严崴，智课网（SmartStudy）GMAT逻辑权威讲师，精跃教育联合创始人，美国宾夕法尼亚州立大学硕士，主讲GMAT逻辑及GMAT/GRE阅读，对GMAT考试中逻辑思维的考查部分有着多年的潜心研究、深刻把握和独到见解，拥有扎实的工科背景及严密的逻辑推理能力，条理清晰、循循善诱、旁征博引、亲切幽默的授课不仅广受学生欢迎，并且培养出了多位GMAT/GRE高分学员。

主讲内容：  
GMAT逻辑

出版物：

## Lecture One

### GMAT 考试介绍.....14

1.GMAT 考试简介 .....14

2.GMAT 考试复习和报名.....15

3.GMAT 备考资料 .....15

## Lecture Two

### GMAT 逻辑基础.....17

1.GMAT 逻辑入门 .....17

2.GMAT 逻辑考况 .....17

3.GMAT 逻辑解题准备.....18

## Lecture Three

### “猜”的四种题型： 读懂文章.....21

1.“猜”的文章特点 .....21

2.“猜”的四种题型简介.....21

3.读懂“猜”的文章 .....22

4.“事物”练习.....22

## Lecture Four

### “猜”之加强题&削弱题： 黑白双煞 .....24

1.加强和削弱的定义.....24

2.文章 *focus* 的重要性.....25

3.相关.....26

4.加强和削弱的重合思路 .....27

## Lecture Five

### “猜”之假设题&评价题： 反正就好 .....29

1.假设的本质 .....29

2.假设和加强的区别.....	30
3.如何取非 .....	31
4.理解评价题 .....	33
5.如何正反回答选项.....	33

## Lecture Six

“猜”的四种题型：判断选项.....	36
1.‘事物’相关性的判断顺序.....	36
2.正确选项特征 .....	36
3.典型的错项设计 .....	37
4.干扰选项辨析 .....	38

## Lecture Seven

“讲”的两种题型：找准重要信息.....	40
1.‘讲’和‘猜’的不同之处.....	40
2.‘讲’了一堆事实，却没给结论 .....	40
3.如何看出结合点 .....	41
4.‘讲’了一件怪事，摸不着头脑 .....	41
5.如何找出矛盾双方.....	42

## Lecture Eight

“讲”之归纳题：所见即所得.....	44
1.归纳的黄金原则.....	44
2.简单的归纳：结合.....	45
3.动脑的归纳：推理.....	45
4.严谨的归纳：Must Be True.....	46

## Lecture Nine

“讲”之解释题：矛盾？不矛盾！ .....	47
-----------------------	----



1.什么才需要解释?.....	47
2.解释题和加强题的相似之处.....	48
3.正确选项与文章 <i>focus</i> 的相关性.....	49
4.阅读理解的重要性.....	50
5.非矛盾型解释题.....	51

## Lecture Ten

### “黑”体作用题：一点都不“黑”！ .....53

1.只管2件事.....	53
2.方向的判断.....	54
3.作用的归类.....	54
4.如何取巧地读文章.....	54
5.一条“黑”捷径：较真你就输了.....	55

# Lecture One

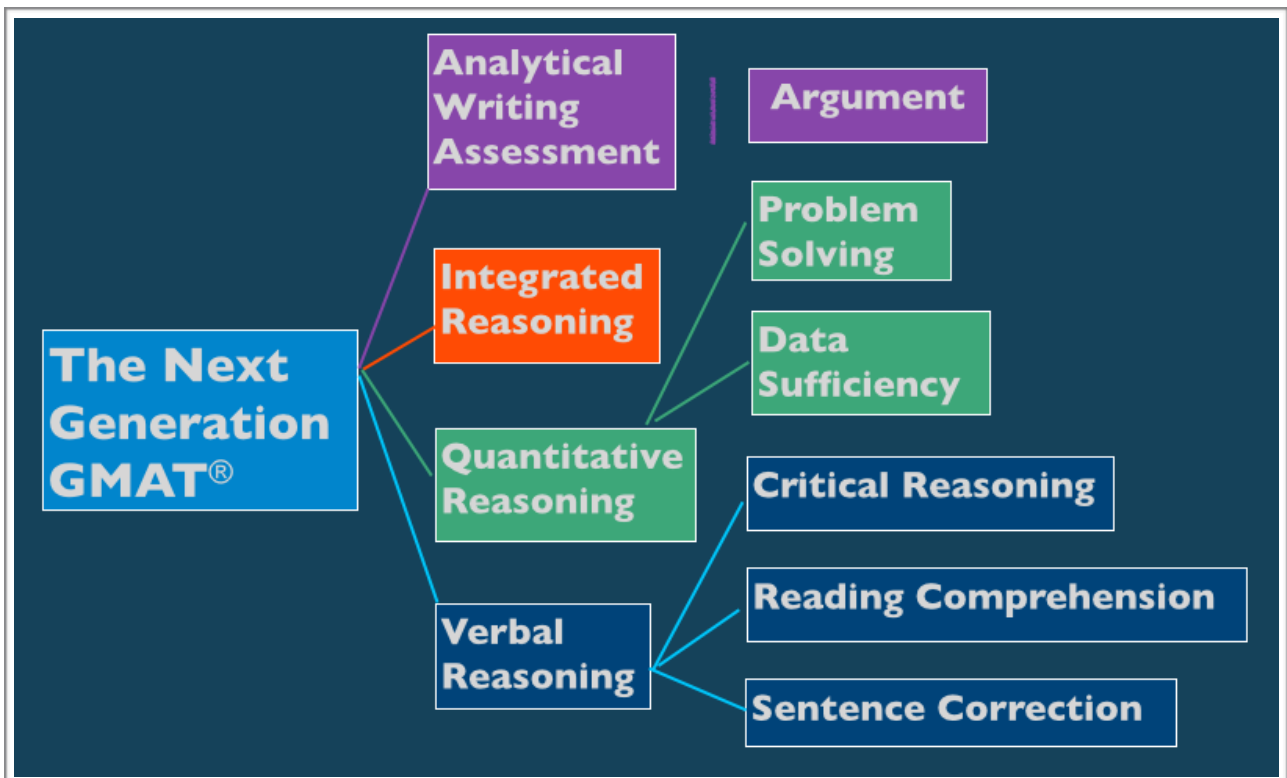
## GMAT 考试介绍

本节课教学大纲:

- GMAT 考试简介
- GMAT 考试复习和报名
- GMAT 备考资料

### I. GMAT 考试简介

- 什么是GMAT?
  - Graduate Management Admission Test
- 为什么要考GMAT?
- GMAT分数重要吗?
- GMAT一共考几个部分?



- GMAT的时间和计分?

Section	Timing	Score
Analytical Writing Assessment	30 min	0 – 6.0
Integrated Reasoning	30 min	1 – 8
Quantitative	75 min	0 – 60
Verbal	75 min	0 – 60
<b>Total</b>	<b>3 h 30 min</b>	<b>200 – 800</b>

- 我和别的考生做的题一样吗？
- 机经是什么？有用吗？
- 考完后多久能知道成绩？
- 考多少分才算够？
- 可以不停地刷分吗？
- 可以选最好的分数给学校看吗？
- 考试成绩的有效期有多久？

## 2.GMAT 考试复习和报名

- 考试复习时间需要多久？
- 复习需要什么材料？
- 怎样安排复习时间？
- 题海战术管用吗？
- GMAT每天都可以考吗？
- 怎么报名GMAT考试？
- 需要提前多久报名？

## 3.GMAT 备考资料

- SmartStudy“我的个人主页”--下载教学提纲：PDF+ePub
- SmartStudy逐题精讲--GMAT热门教材逐题精讲
- SmartStudy智能学习管理中心--智能学习 高效提分

- SmartStudy讲座现场--与名师实时互动交流
- SmartPigai--权威专家 资深外教 专业批改
- APP移动学习 (IOS+Android)



## Lecture Two

# GMAT 逻辑基础

本节课教学大纲:

- GMAT 逻辑入门
- GMAT 逻辑考况
- GMAT 逻辑解题准备

### I. GMAT 逻辑入门

- 小试牛刀
  - 因为我是男人，所以我一定能减肥成功。假设？
  - 高富帅和白富美在一起，白富美爱吃茶叶蛋，买茶叶蛋会破产！结论？
  - 李雷GMAT考了790+8+6.0，也拿到了Stanford的Offer，但却留在了上海工作。解释？
- 什么是Critical Reasoning？
- GMAT为什么要考CR？

### 2. GMAT 逻辑考况

- 一次考试有多少道CR？
- CR是怎么考的？
  - 样例  
Homeowners aged 40 to 50 are more likely to purchase ice cream and are more likely to purchase it in larger amounts than are members of any other demographic group. The popular belief that teenagers eat more ice cream than adults must, therefore, be false.  
  
The argument is flawed primarily because the author  
(A) fails to distinguish between purchasing and consuming  
(B) does not supply information about homeowners in age groups other than 40 to 50  
(C) depends on popular belief rather than on documented research findings  
(D) does not specify the precise amount of ice cream purchased by any demographic group  
(E) discusses ice cream rather than more nutritious and healthful food

- 做一道CR题一般多少时间？  
TOEFL, SAT, IELTS, GRE, GMAT五大出国考试各科首席讲师齐聚智课网 ([SmartStudy.com](http://SmartStudy.com))

- CR难在哪里?

- ─样例1

The tulu, a popular ornamental plant, does not reproduce naturally, and is only bred and sold by specialized horticultural companies. Unfortunately, the tulu is easily devastated by a contagious fungal rot. The government ministry plans to reassure worried gardeners by requiring all tulu plants to be tested for fungal rot before being sold. However, infected plants less than 30 weeks old have generally not built up enough fungal rot in their systems to be detected reliably. And many tulu plants are sold before they are 24 weeks old.

Which of the following, if performed by the government ministry, could logically be expected to overcome the problem with their plan to test for the fungal rot?

(A)...

- ─样例2

When hypnotized subjects are told that they are deaf and are then asked whether they can hear the hypnotist, they reply, “No.” Some theorists try to explain this result by arguing that the selves of hypnotized subjects are dissociated into separate parts, and that the part that is deaf is dissociated from the part that replies.

Which of the following challenges indicates the most serious weakness in the attempted explanation described above?

(A) Why does the part that replies not answer, “Yes”?

(B) Why are the observed facts in need of any special explanation?

(C) Why do the subjects appear to accept the hypnotist’s suggestion that they are deaf?

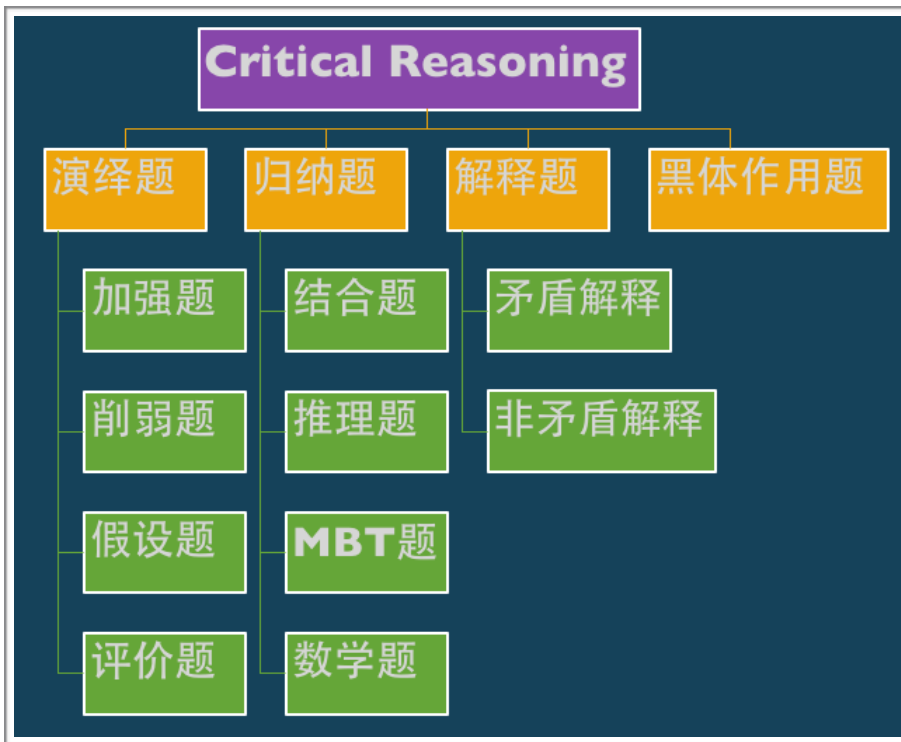
(D) Why do hypnotized subjects all respond the same way in the situation described?

(E) Why are the separate parts of the self the same for all subjects?

- 想上700分，CR可以错几个?

### 3.GMAT 逻辑解题准备

- CR题目有哪些类型?



- 做CR题，需要哪些知识？

─ 样例

Insurance Company X is considering issuing a new policy to cover services required by elderly people who suffer from diseases that afflict the elderly. Premiums for the policy must be low enough to attract customers. Therefore, Company X is concerned that the income from the policies would not be sufficient to pay for the claims that would be made.

Which of the following strategies would be most likely to minimize Company X's losses on the policies?

- (A) Attracting middle-aged customers unlikely to submit claims for benefits for many years
- (B) Insuring only those individuals who did not suffer any serious diseases as children
- (C) Including a greater number of services in the policy than are included in other policies of lower cost

(D) Insuring only those individuals who were rejected by other companies for similar policies

(E) Insuring only those individuals who are wealthy enough to pay for the medical services

- 需要学习逻辑学吗?
- CR题对词汇和阅读的要求高吗?
- 出题人的思路会很绕吗?

■ 样例

A company is considering changing its policy concerning daily working hours. Currently, this company requires all employees to arrive at work at 8 a.m. The proposed policy would permit each employee to decide when to arrive—from as early as 6 a.m. to as late as 11 a.m.

The adoption of this policy would be most likely to decrease employees' productivity if the employees' job functions required them to

- (A) work without interruption from other employees
- (B) consult at least once a day with employees from other companies
- (C) submit their work for a supervisor's eventual approval
- (D) interact frequently with each other throughout the entire workday
- (E) undertake projects that take several days to complete

- 我总是想太多，这样好吗?



## Lecture Three

### “猜”的四种题型：读懂文章

本节课教学大纲：

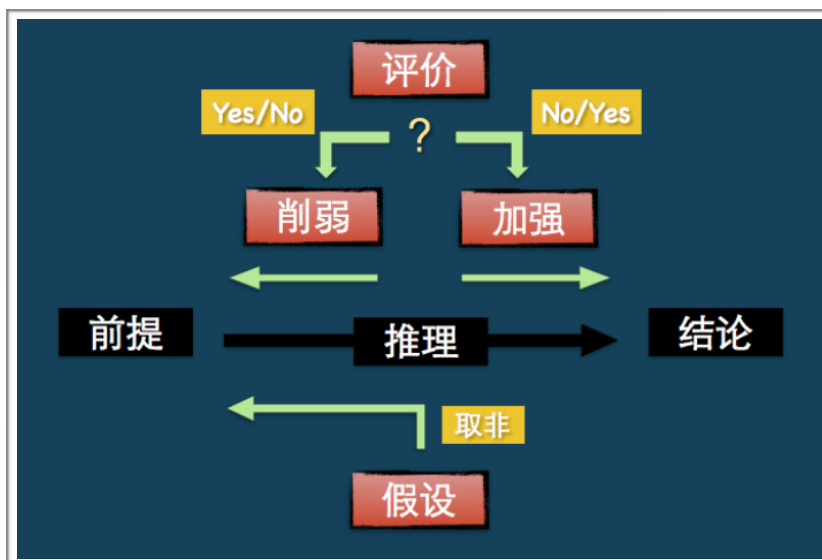
- “猜”的文章特点
- “猜”的四种题型简介
- 读懂“猜”的文章
- “事物”练习

#### 1.“猜”的文章特点

- 去年有十颗苹果掉了下来。每颗苹果都砸中了我脑门。故，去年我被砸了十次脑门。  
    -事实 → 总结 = 归纳
- 因为去年成熟的苹果掉了下来，所以明年成熟的苹果也一定会掉下来。  
    -事实 → 猜测 = 演绎

#### 2.“猜”的四种题型简介

- “猜”的四种题型  
    例：沃顿排名比斯坦福低，因为宾州比加州冷  
    假设：温度高低与商学院排名高低成正比  
    加强：同样冷的哈佛也比斯坦福排名低  
    削弱：在过去十年中宾州平均气温超过加州  
    评价：温度是否与商学院排名有关？



### 3. 读懂“猜”的文章

- 1

In recent years, many cabinetmakers have been winning acclaim as artists. But since furniture must be useful, cabinetmakers must exercise their craft with an eye to the practical utility of their product. For this reason, cabinetmaking is not art.

Which of the following is an assumption that supports drawing the conclusion above from the reason given for that conclusion?

- 2

Male bowerbirds construct elaborately decorated nests, or bowers. Basing their judgment on the fact that different local populations of bowerbirds of the same species build bowers that exhibit different building and decorative styles, researchers have concluded that the bowerbirds' building styles are a culturally acquired, rather than a genetically transmitted, trait.

Which of the following, if true, would most strengthen the conclusion drawn by the researchers?

- 3

In comparison to the standard typewriter keyboard, the EFCO keyboard, which places the most-used keys nearest the typist's strongest fingers, allows faster typing and results in less fatigue. Therefore, replacement of standard keyboards with the EFCO keyboard will result in an immediate reduction of typing costs.

Which of the following, if true, would most weaken the conclusion drawn above?

### 4. “事物”练习

- 1

Northern Air has dozens of flights daily into and out of Belleville Airport, which is highly congested. Northern Air depends for its success on economy and quick turnaround and consequently is planning to replace its large planes with Skybuses, whose novel aerodynamic design is extremely fuel efficient. The Skybus's fuel efficiency results in both lower fuel costs and reduced time spent refueling.

Which of the following, if true, could present the most serious disadvantage for Northern Air in replacing their large planes with Skybuses?

- 2

Certain genetically modified strains of maize produce a powerful natural insecticide. The insecticide occurs throughout the plant, including its pollen. Maize pollen is dispersed by the wind and frequently blows onto milkweed plants that grow near maize fields. Caterpillars of monarch butterflies feed exclusively on milkweed leaves. When these caterpillars are fed milkweed leaves dusted with pollen from modified maize plants, they die. Therefore, by using genetically modified maize, farmers put monarch butterflies at risk.

Which of the following would it be most useful to determine in order to evaluate the argument?

- 3

Studies in restaurants show that the tips left by customers who pay their bill in cash tend to be larger when the bill is presented on a tray that bears a credit- card logo. Consumer psychologists hypothesize that simply seeing a credit-card logo makes many credit- card holders willing to spend more because it reminds them that their spending power exceeds the cash they have immediately available.

Which of the following, if true, most strongly supports the psychologists' interpretation of the studies?

## Lecture Four

### “猜”之加强题&削弱题：黑白双煞

本节课教学大纲：

- 加强和削弱的定义
- 文章 focus 的重要性
- 相关
- 加强和削弱的重合思路

#### I.加强和削弱的定义

- 加强



- strengthen
- strongly support
- strongest ground for

#### ✓样例

Excavation of the ancient city of Kourion on the island of Cyprus revealed a pattern of debris and collapsed buildings typical of towns devastated by earthquakes. Archaeologists have hypothesized that the destruction was due to a major earthquake known to have occurred near the island in A.D. 365.

Which of the following, if true, most strongly supports the archaeologists' hypothesis?

- (A) Bronze ceremonial drinking vessels that are often found in graves dating from years preceding and following A.D. 365 were also found in several graves near Kourion.
- (B) No coins minted after A.D. 365 were found in Kourion, but coins minted before that year were found in abundance.
- (C) Most modern histories of Cyprus mention that an earthquake occurred near the island in A.D. 365.

(D) Several small statues carved in styles current in Cyprus in the century between A.D. 300 and A.D. 400 were found in Kourion.

(E) Stone inscriptions in a form of the Greek alphabet that was definitely used in Cyprus after A.D. 365 were found in Kourion.

- 削弱



- seriously weaken/undermine/jeopardize
- cast doubt on
- call into question

✓ 样例

An overly centralized economy, not the changes in the climate, is responsible for the poor agricultural production in Country X since its new government came to power. Neighboring Country Y has experienced the same climatic conditions, but while agricultural production has been falling in Country X, it has been rising in Country Y.

Which of the following, if true, would most weaken the argument above?

- (A) Industrial production also is declining in Country X.
- (B) Whereas Country Y is landlocked, Country X has a major seaport.
- (C) Both Country X and Country Y have been experiencing drought conditions.
- (D) The crops that have always been grown in Country X are different from those that have always been grown in Country Y.
- (E) Country X's new government instituted a centralized economy with the intention of ensuring an equitable distribution of goods.

## 2. 文章 focus 的重要性

- 样例

One variety of partially biodegradable plastic beverage container is manufactured from small bits of plastic bound together by a degradable bonding agent such as cornstarch. Since only the bonding agent degrades, leaving the small bits of plastic, no less plastic refuse per container is produced when such containers are discarded than when comparable nonbiodegradable containers are discarded.

Which of the following, if true, most strengthens the argument above?

- (A) Both partially biodegradable and nonbiodegradable plastic beverage containers can be crushed completely flat by refuse compactors.
- (B) The partially biodegradable plastic beverage containers are made with more plastic than comparable nonbiodegradable ones in order to compensate for the weakening effect of the bonding agents.
- (C) Many consumers are ecology-minded and prefer to buy a product sold in the partially biodegradable plastic beverage containers rather than in nonbiodegradable containers, even if the price is higher.
- (D) The manufacturing process for the partially biodegradable plastic beverage containers results in less plastic waste than the manufacturing process for nonbiodegradable plastic beverage containers.
- (E) Technological problems with recycling currently prevent the reuse as food or beverage containers of the plastic from either type of plastic beverage container.

### 3.相关

- I

A drug that is highly effective in treating many types of infection can, at present, be obtained only from the bark of the ibora, a tree that is quite rare in the wild. It takes the bark of 5,000 trees to make one kilogram of the drug. It follows, therefore, that continued production of the drug must inevitably lead to the ibora's extinction.

Which of the following, if true, most seriously weakens the argument above?

- (A) The drug made from ibora bark is dispensed to doctors from a central authority.
- (B) The drug made from ibora bark is expensive to produce.
- (C) The leaves of the ibora are used in a number of medical products.
- (D) The ibora can be propagated from cuttings and grown under cultivation.
- (E) The ibora generally grows in largely inaccessible places.

• 2

Red blood cells in which the malarial-fever parasite resides are eliminated from a person's body after 120 days. Because the parasite cannot travel to a new generation of red blood cells, any fever that develops in a person more than 120 days after that person has moved to a malaria-free region is not due to the malarial parasite.

Which of the following, if true, most seriously weakens the conclusion above?

- (A) The fever caused by the malarial parasite may resemble the fever caused by flu viruses.
- (B) The anopheles mosquito, which is the principal insect carrier of the malarial parasite, has been eradicated in many parts of the world.
- (C) Many malarial symptoms other than the fever, which can be suppressed with antimalarial medication, can reappear within 120 days after the medication is discontinued.
- (D) In some cases, the parasite that causes malarial fever travels to cells of the spleen, which are less frequently eliminated from a person's body than are red blood cells.
- (E) In any region infested with malaria-carrying mosquitoes, there are individuals who appear to be immune to malaria.

4.加强和削弱的重合思路

• 1

In the last decade there has been a significant decrease in coffee consumption. During this same time, there has been increasing publicity about the adverse long-term effects on health of the caffeine in coffee. Therefore, the decrease in coffee consumption must have been caused by consumers' awareness of the harmful effects of caffeine.

Which of the following, if true, most seriously calls into question the explanation above?

- (A) On average, people consume 30 percent less coffee today than they did 10 years ago.
- (B) Heavy coffee drinkers may have mild withdrawal symptoms, such as headaches, for a day or so after significantly decreasing their coffee consumption.
- (C) Sales of specialty types of coffee have held steady as sales of regular brands have declined.
- (D) The consumption of fruit juices and caffeine-free herbal teas has increased over the past decade.
- (E) Coffee prices increased steadily in the past decade because of unusually severe frosts in coffee-growing nations.



• 2

Codex Berinensis, a Florentine copy of an ancient Roman medical treatise, is undated but contains clues to when it was produced. Its first 80 pages are by a single copyist, but the remaining 20 pages are by three different copyists, which indicates some significant disruption. Since a letter in handwriting identified as that of the fourth copyist mentions a plague that killed many people in Florence in 1148, Codex Berinensis was probably produced in that year.

Which of the following, if true, most strongly supports the hypothesis that Codex Berinensis was produced in 1148?

- (A) Other than Codex Berinensis, there are no known samples of the handwriting of the first three copyists.
- (B) According to the account by the fourth copyist, the plague went on for 10 months.
- (C) A scribe would be able to copy a page of text the size and style of Codex Berinensis in a day.
- (D) There was only one outbreak of plague in Florence in the 1100s.
- (E) The number of pages of Codex Berinensis produced by a single scribe becomes smaller with each successive change of copyist.

## Lecture Five

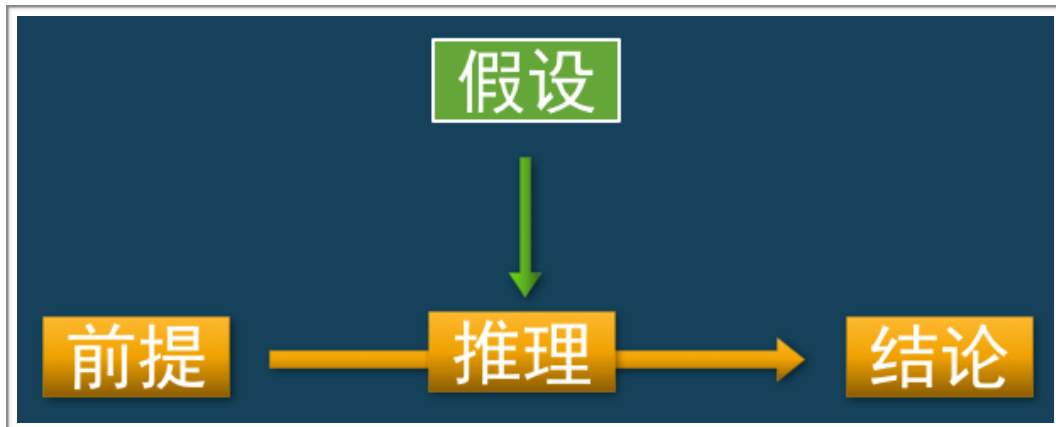
### “猜”之假设题&评价题：反正就好

本节课教学大纲：

- 假设的本质
- 假设和加强的区别
- 如何取非
- 理解评价题
- 如何正反回答选项

#### I. 假设的本质

- 样例  
例：因为北京雾霾更大，所以上海肺病更少。  
在这个“猜”里面，作者少说了什么吗？  
必须要保证什么，才能保证“猜”的是对的？  
如果不能保证什么，“猜”就不成立了？  
这个“什么”，就是假设！



—assumption/assume

—required

- 必要条件
  - 欲练神功 必先自宫 就算自宫 未必成功
  - 神功 → 自宫
  - 样例

Although parapsychology is often considered a pseudoscience, it is in fact a genuine scientific enterprise, for it uses scientific methods such as controlled experiments and statistical tests of clearly stated hypotheses to examine the questions it raises.

The conclusion above is properly drawn if which of the following is assumed?

- (A) If a field of study can conclusively answer the questions it raises, then it is a genuine science.
- (B) Since parapsychology uses scientific methods, it will produce credible results.
- (C) Any enterprise that does not use controlled experiments and statistical tests is not genuine science.
- (D) Any field of study that employs scientific methods is a genuine scientific enterprise.
- (E) Since parapsychology raises clearly statable questions, they can be tested in controlled experiments.

## 2.假设和加强的区别

- 1

The spacing of the four holes on a fragment of a bone flute excavated at a Neanderthal campsite is just what is required to play the third through sixth notes of the diatonic scale—the seven-note musical scale used in much of Western music since the Renaissance. Musicologists therefore hypothesize that the diatonic musical scale was developed and used thousands of years before it was adopted by Western musicians.

Which of the following, if true, most strongly supports the hypothesis?

- (A) Bone flutes were probably the only musical instrument made by Neanderthals.
- (B) No musical instrument that is known to have used a diatonic scale is of an earlier date than the flute found at the Neanderthal campsite.
- (C) The flute was made from a cave-bear bone and the campsite at which the flute fragment was excavated was in a cave that also contained skeletal remains of cave bears.
- (D) Flutes are the simplest wind instrument that can be constructed to allow playing a diatonic scale.
- (E) The cave-bear leg bone used to make the Neanderthal flute would have been long enough to make a flute capable of playing a complete diatonic scale.

- 2

Studies in restaurants show that the tips left by customers who pay their bill in cash tend to be larger when the bill is presented on a tray that bears a credit-card logo. Consumer psychologists hypothesize that simply seeing a credit-card logo makes many credit-card holders willing to spend more because it reminds them that their spending power exceeds the cash they have immediately available.

Which of the following, if true, most strongly supports the psychologists' interpretation of the studies?

- (A) The effect noted in the studies is not limited to patrons who have credit cards.
- (B) Patrons who are under financial pressure from their credit-card obligations tend to tip less when presented with a restaurant bill on a tray with a credit-card logo than when the tray has no logo.
- (C) In virtually all of the cases in the studies, the patrons who paid bills in cash did not possess credit cards.
- (D) In general, restaurant patrons who pay their bills in cash leave larger tips than do those who pay by credit card.
- (E) The percentage of restaurant bills paid with a given brand of credit card increases when that credit card's logo is displayed on the tray with which the bill is presented.

- Verbal
  - Conclusion
  - ✓this
- Verbal
  - Conclusion
  - ✓this
- Verbal
  - Conclusion
  - ✓this

### 3.如何取非

- |

Many people suffer an allergic reaction to certain sulfites, including those that are commonly added to wine as preservatives. However, since there are several winemakers
- TOEFL,SAT,IELTS,GRE,GMAT五大出国考试各科首席讲师齐聚智课网 ([SmartStudy.com](http://SmartStudy.com))

who add sulfites to none of the wines they produce, people who would like to drink wine but are allergic to sulfites can drink wines produced by these winemakers without risking an allergic reaction to sulfites.

Which of the following is an assumption on which the argument depends?

- (A) These winemakers have been able to duplicate the preservative effect produced by adding sulfites by means that do not involve adding any potentially allergenic substances to their wine.
- (B) Not all forms of sulfite are equally likely to produce the allergic reaction.
- (C) Wine is the only beverage to which sulfites are commonly added.
- (D) Apart from sulfites, there are no substances commonly present in wine that give rise to an allergic reaction.
- (E) Sulfites are not naturally present in the wines produced by these winemakers in amounts large enough to produce an allergic reaction in someone who drinks these wines.

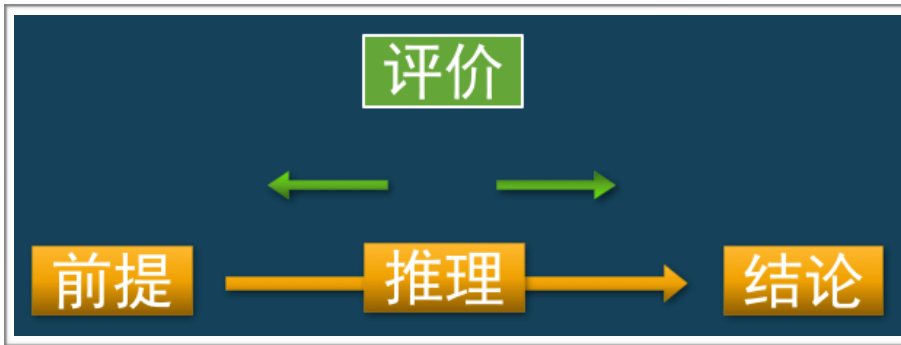
• 2

Although computers can enhance people's ability to communicate, computer games are a cause of underdeveloped communication skills in children. After-school hours spent playing computer games are hours not spent talking with people. Therefore, children who spend all their spare time playing these games have less experience in interpersonal communication than other children have.

The argument depends on which of the following assumptions?

- (A) Passive activities such as watching television and listening to music do not hinder the development of communication skills in children.
- (B) Most children have other opportunities, in addition to after-school hours, in which they can choose whether to play computer games or to interact with other people.
- (C) Children who do not spend all of their after-school hours playing computer games spend at least some of that time talking with other people.
- (D) Formal instruction contributes little or nothing to children's acquisition of communication skills.
- (E) The mental skills developed through playing computer games do not contribute significantly to children's intellectual development.

#### 4.理解评价题



- evaluate/assess
- determine/know
- useful

##### ■ 样例

A certain automaker aims to increase its market share by deeply discounting its vehicles' prices for the next several months. The discounts will cut into profits, but because they will be heavily advertised the manufacturer hopes that they will attract buyers away from rival manufacturers' cars. In the longer term, the automaker envisions that customers initially attracted by the discounts may become loyal customers.

In assessing the plan's chances of achieving its aim, it would be most useful to know which of the following?

- (A) Whether the automaker's competitors are likely to respond by offering deep discounts on their own products
- (B) Whether the advertisements will be created by the manufacturer's current advertising agency
- (C) Whether some of the automaker's models will be more deeply discounted than others
- (D) Whether the automaker will be able to cut costs sufficiently to maintain profit margins even when the discounts are in effect
- (E) Whether an alternative strategy might enable the automaker to enhance its profitability while holding a constant or diminishing share of the market

#### 5.如何正反回答选项

- |

Community activist: If Morganville wants to keep its central shopping district healthy, it should prevent the opening of a huge SaveAll discount department store on the outskirts of Morganville. Records from other small towns show that whenever SaveAll has opened a store outside the central shopping district of a small town, within five years the town has experienced the bankruptcies of more than a quarter of the stores in the shopping district.

The answer to which of the following would be most useful for evaluating the community activist's reasoning?

- (A) Have community activists in other towns successfully campaigned against the opening of a SaveAll store on the outskirts of their towns?
- (B) Do a large percentage of the residents of Morganville currently do almost all of their shopping at stores in Morganville?
- (C) In towns with healthy central shopping districts, what proportion of the stores in those districts suffer bankruptcy during a typical five-year period?
- (D) What proportion of the employees at the SaveAll store on the outskirts of Morganville will be drawn from Morganville?
- (E) Do newly opened SaveAll stores ever lose money during their first five years of operation?

• 2

For similar cars and comparable drivers, automobile insurance for collision damage has always cost more in Greatport than in Fairmont. Police studies, however, show that cars owned by Greatport residents are, on average, slightly less likely to be involved in a collision than cars in Fairmont. Clearly, therefore, insurance companies are making a greater profit on collision- damage insurance in Greatport than in Fairmont.

In evaluating the argument, it would be most useful to compare

- (A) the level of traffic congestion in Greatport with the level of traffic congestion in Fairmont
- (B) the cost of repairing collision damage in Greatport with the cost of repairing collision damage in Fairmont
- (C) the rates Greatport residents pay for other forms of insurance with the rates paid for similar insurance by residents of Fairmont



- (D) the condition of Greatport's roads and streets with the condition of Fairmont's roads and streets
- (E) the cost of collision-damage insurance in Greatport and Fairmont with that in other cities

## Lecture Six

### “猜”的四种题型：判断选项

本节课教学大纲：

- “事物”相关性的判断顺序
- 正确选项特征
- 典型的错项设计
- 干扰选项辨析

#### 1.“事物”相关性的判断顺序

- 样例

Only a reduction of 10 percent in the number of scheduled flights using Greentown's airport will allow the delays that are so common there to be avoided. Hevelia airstrip, 40 miles away, would, if upgraded and expanded, be an attractive alternative for fully 20 percent of the passengers using Greentown airport. Nevertheless, experts reject the claim that turning Hevelia into a full-service airport would end the chronic delays at Greentown.

Which of the following, if true, most helps to justify the experts' position?

- (A) Turning Hevelia into a full-service airport would require not only substantial construction at the airport itself, but also the construction of new access highways.
- (B) A second largely undeveloped airstrip close to Greentown airport would be a more attractive alternative than Hevelia for many passengers who now use Greentown.
- (C) Hevelia airstrip lies in a relatively undeveloped area but would, if it became a full-service airport, be a magnet for commercial and residential development.
- (D) If an airplane has to wait to land, the extra jet fuel required adds significantly to the airline's costs.
- (E) Several airlines use Greentown as a regional hub, so that most flights landing at Greentown have many passengers who then take different flights to reach their final destinations.

#### 2.正确选项特征

- 样例

A major network news organization experienced a drop in viewership in the week following the airing of a controversial report on the economy. The network also received a

TOEFL, SAT, IELTS, GRE, GMAT 五大出国考试各科首席讲师齐聚智课网 ([SmartStudy.com](http://SmartStudy.com))

very large number of complaints regarding the report. The network, however, maintains that negative reactions to the report had nothing to do with its loss of viewers.

Which of the following, if true, most strongly supports the network's position?

- (A) The other major network news organizations reported similar reductions in viewership during the same week.
- (B) The viewers who registered complaints with the network were regular viewers of the news organization's programs.
- (C) Major network news organizations publicly attribute drops in viewership to their own reports only when they receive complaints about those reports.
- (D) This was not the first time that this network news organization has aired a controversial report on the economy that has inspired viewers to complain to the network.
- (E) Most network news viewers rely on network news broadcasts as their primary source of information regarding the economy.

### 3.典型的错项设计

- I

In comparison to the standard typewriter keyboard, the EFCO keyboard, which places the most-used keys nearest the typist's strongest fingers, allows faster typing and results in less fatigue. Therefore, replacement of standard keyboards with the EFCO keyboard will result in an immediate reduction of typing costs.

Which of the following, if true, would most weaken the conclusion drawn above?

- (A) People who use both standard and EFCO keyboards report greater difficulty in the transition from the EFCO keyboard to the standard keyboard than in the transition from the standard keyboard to the EFCO keyboard.
- (B) EFCO keyboards are no more expensive to manufacture than are standard keyboards and require less frequent repair than do standard keyboards.
- (C) The number of businesses and government agencies that use EFCO keyboards is increasing each year.
- (D) The more training and experience an employee has had with the standard keyboard, the more costly it is to train that employee to use the EFCO keyboard.
- (E) Novice typists can learn to use the EFCO keyboard in about the same amount of time that it takes them to learn to use the standard keyboard.

- 2

Journalist: In physics journals, the number of articles reporting the results of experiments involving particle accelerators was lower last year than it had been in previous years. Several of the particle accelerators at major research institutions were out of service the year before last for repairs, so it is likely that the low number of articles was due to the decline in availability of particle accelerators.

Which of the following, if true, most seriously undermines the journalist's argument?

- (A) Every article based on experiments with particle accelerators that was submitted for publication last year actually was published.
- (B) The average time scientists must wait for access to a particle accelerator has declined over the last several years.
- (C) The number of physics journals was the same last year as in previous years.
- (D) Particle accelerators can be used for more than one group of experiments in any given year.
- (E) Recent changes in the editorial policies of several physics journals have decreased the likelihood that articles concerning particle- accelerator research will be accepted for publication.

#### 4.干扰选项辨析

- I

A recent report determined that although only 3 percent of drivers on Maryland highways equipped their vehicles with radar detectors, 33 percent of all vehicles ticketed for exceeding the speed limit were equipped with them. Clearly, drivers who equip their vehicles with radar detectors are more likely to exceed the speed limit regularly than are drivers who do not.

The conclusion drawn above depends on which of the following assumptions?

- (A) Drivers who equip their vehicles with radar detectors are less likely to be ticketed for exceeding the speed limit than are drivers who do not.
- (B) Drivers who are ticketed for exceeding the speed limit are more likely to exceed the speed limit regularly than are drivers who are not ticketed.
- (C) The number of vehicles that were ticketed for exceeding the speed limit was greater than the number of vehicles that were equipped with radar detectors.

(D) Many of the vehicles that were ticketed for exceeding the speed limit were ticketed more than once in the time period covered by the report.

(E) Drivers on Maryland highways exceeded the speed limit more often than did drivers on other state highways not covered in the report.

• 2

Last year all refuse collected by Shelbyville city services was incinerated. This incineration generated a large quantity of residual ash. In order to reduce the amount of residual ash Shelbyville generates this year to half of last year's total, the city has revamped its collection program. This year city services will separate for recycling enough refuse to reduce the number of truckloads of refuse to be incinerated to half of last year's number.

Which of the following is required for the revamped collection program to achieve its aim?

(A) This year, no materials that city services could separate for recycling will be incinerated.

(B) Separating recyclable materials from materials to be incinerated will cost Shelbyville less than half what it cost last year to dispose of the residual ash.

(C) Refuse collected by city services will contain a larger proportion of recyclable materials this year than it did last year.

(D) The refuse incinerated this year will generate no more residual ash per truckload incinerated than did the refuse incinerated last year.

(E) The total quantity of refuse collected by Shelbyville city services this year will be no greater than that collected last year.

## Lecture Seven

### “讲”的两种题型：找准重要信息

本节课教学大纲：

- “讲”和“猜”的不同之处
- “讲”了一堆事实，却没给结论
- 如何看出结合点
- “讲”了一件怪事，摸不着头脑
- 如何找出矛盾双方

#### 1.“讲”和“猜”的不同之处

- 谁在“猜”？谁在“讲”？

While many people think of genetic manipulation of food crops as being aimed at developing larger and larger plant varieties, some plant breeders have in fact concentrated on discovering or producing dwarf varieties, which are roughly half as tall as normal varieties.

In virtually any industry, technological improvements increase labor productivity, which is the output of goods and services per person-hour worked. In Parland's industries, labor productivity is significantly higher than it is in Vergia's industries. Clearly, therefore, Parland's industries must, on the whole, be further advanced technologically than Vergia's are.

#### 2.“讲”了一堆事实，却没给结论

- 样例

To protect certain fledgling industries, the government of Country Z banned imports of the types of products those industries were starting to make. As a direct result, the cost of those products to the buyers, several export-dependent industries in Z, went up, sharply limiting the ability of those industries to compete effectively in their export markets.

Which of the following conclusions about Country Z's adversely affected export-dependent industries is best supported by the passage?



- (A) Those products had been cheaper to import than they were to make within country Z's fledgling industries.
- (B) Those products were the ones that country Z was hoping to export in its turn, once the fledgling industries matured.
- (C) Those products used to be imported from just those countries to which country Z's exports went.
- (D) Those products had become more and more expensive to import, which resulted in a foreign trade deficit just before the ban.
- (E) Those products used to be imported in very small quantities, but they were essential to country Z's economy.

### 3.如何看出结合点

- 样例

When a polygraph test is judged inconclusive, this is no reflection on the examinee. Rather, such a judgment means that the test has failed to show whether the examinee was truthful or untruthful. Nevertheless, employers will sometimes refuse to hire a job applicant because of an inconclusive polygraph test result.

Which of the following conclusions can most properly be drawn from the information above?

- (A) Most examinees with inconclusive polygraph test results are in fact untruthful.
- (B) Polygraph tests should not be used by employers in the consideration of job applicants.
- (C) An inconclusive polygraph test result is sometimes unfairly held against the examinee.
- (D) A polygraph test indicating that an examinee is untruthful can sometimes be mistaken.
- (E) Some employers have refused to consider the results of polygraph tests when evaluating job applicants.

### 4.“讲”了一件怪事，摸不着头脑

- 样例

Parland's alligator population has been declining in recent years, primarily because of hunting. Alligators prey heavily on a species of freshwater fish that is highly valued as food by Parlanders, who had hoped that the decline in the alligator population would lead to an increase in the numbers of these fish available for human consumption. Yet the population

of this fish species has also declined, even though the annual number caught for human consumption has not increased.

Which of the following, if true, most helps to explain the decline in the population of the fish species?

- (A) The decline in the alligator population has meant that fishers can work in some parts of lakes and rivers that were formerly too dangerous.
- (B) Over the last few years, Parland's commercial fishing enterprises have increased the number of fishing boats they use.
- (C) The main predator of these fish is another species of fish on which alligators also prey.
- (D) Many Parlanders who hunt alligators do so because of the high market price of alligator skins, not because of the threat alligators pose to the fish population.
- (E) In several neighboring countries through which Parland's rivers also flow, alligators are at risk of extinction as a result of extensive hunting.

## 5.如何找出矛盾双方

- 样例

In order to reduce the number of items damaged while in transit to customers, packaging consultants recommended that the TrueSave mail-order company increase the amount of packing material so as to fill any empty spaces in its cartons. Accordingly, TrueSave officials instructed the company's packers to use more packing material than before, and the packers zealously acted on these instructions and used as much as they could. Nevertheless, customer reports of damaged items rose somewhat.

Which of the following, if true, most helps to explain why acting on the consultants' recommendation failed to achieve its goal?

- (A) The change in packing policy led to an increase in expenditure on packing material and labor.
- (B) When packing material is compressed too densely, it loses some of its capacity to absorb shock.
- (C) The amount of packing material used in a carton does not significantly influence the ease with which a customer can unpack the package.
- (D) Most of the goods that TrueSave ships are electronic products that are highly vulnerable to being damaged in transit.

(E) TrueSave has lost some of its regular customers as a result of the high number of damaged items they received.

## Lecture Eight

### “讲”之归纳题：所见即所得

本节课教学大纲：

- 归纳的黄金原则
- 简单的归纳：结合
- 动脑的归纳：推理
- 严谨的归纳：Must Be True

#### I. 归纳的黄金原则



- conclusion
- must be true

- 无矛盾，有支持

To protect certain fledgling industries, the government of Country Z banned imports of the types of products those industries were starting to make. As a direct result, the cost of those products to the buyers, several export-dependent industries in Z, went up, sharply limiting the ability of those industries to compete effectively in their export markets.

Which of the following conclusions about Country Z's adversely affected export-dependent industries is best supported by the passage?

- (A) Profit margins in those industries were not high enough to absorb the rise in costs mentioned above.
- (B) Those industries had to contend with the fact that other countries banned imports from Country Z.
- (C) Those industries succeeded in expanding the domestic market for their products.

(D) Steps to offset rising materials costs by decreasing labor costs were taken in those industries.

(E) Those industries started to move into export markets that they had previously judged unprofitable.

## 2.简单的归纳：结合

- 样例

A violin constructed to have improved sound would sound different from the best-sounding existing violins. To professional violinists, a violin that sounds different from the best-sounding existing violins sounds less like a violin and therefore worse than the best-sounding existing violins. Professional violinists are the only accepted judges of the sound quality of violins.

Which of the following would be the best supported by those statements?

(A) Only amateur violinists should be asked to judge the sound quality of newly constructed violins.

(B) Professional violinists supervise the construction of violins.

(C) The best-sounding existing violins have been in existence for several centuries.

(D) It is currently impossible to construct a violin that the only accepted judges will evaluate as having improved sound.

(E) It is possible to construct a violin that sounds better than the best-sounding existing violins to everyone but professional violinists.

## 3.动脑的归纳：推理

- 样例

For a trade embargo against a particular country to succeed, a high degree of both international accord and ability to prevent goods from entering or leaving that country must be sustained. A total blockade of Patria's ports is necessary to an embargo, but such an action would be likely to cause international discord over the embargo.

The claims above, if true, most strongly support which of the following conclusions?

(A) The balance of opinion is likely to favor Patria in the event of a blockade.

(B) As long as international opinion is unanimously against Patria, a trade embargo is likely to succeed.

(C) A naval blockade of Patria's ports would ensure that no goods enter or leave Patria.

(D) Any trade embargo against Patria would be likely to fail at some time.

(E) For a blockade of Patria's ports to be successful, international opinion must be unanimous.

#### 4.严谨的归纳: Must Be True

- 样例

The percentage of households with an annual income of more than \$40,000 is higher in Merton County than in any other county. However, the percentage of households with an annual income of \$60,000 or more is higher in Sommer County.

If the statements above are true, which of the following must also be true?

(A) The percentage of households with an annual income of \$80,000 is higher in Sommer County than in Merton County.

(B) Merton County has the second highest percentage of households with an annual income of \$60,000 or more.

(C) Some households in Merton County have an annual income between \$40,000 and \$60,000.

(D) The number of households with an annual income of more than \$40,000 is greater in Merton County than in Sommer County.

(E) Average annual household income is higher in Sommer County than in Merton County.



## Lecture Nine

### “讲”之解释题：矛盾？不矛盾！

本节课教学大纲：

- 什么才需要解释？
- 解释题和加强题的相似之处
- 正确选项与文章focus的相关性
- 阅读理解的重要性
- 非矛盾型解释题

#### I. 什么才需要解释？



- explain
- account for
- support/justify the prediction/expectation/claim
- since/because \_\_\_\_\_.

#### ■ 样例I

In order to withstand tidal currents, juvenile horseshoe crabs frequently burrow in the sand. Such burrowing discourages barnacles from clinging to their shells. When fully grown, however, the crabs can readily withstand tidal currents without burrowing, and thus they acquire substantial populations of barnacles. Surprisingly, in areas where tidal currents are very weak, juvenile horseshoe crabs are found not to have significant barnacle populations, even though they seldom burrow.

Which of the following, if true, most helps to explain the surprising finding?

(A) Tidal currents do not themselves dislodge barnacles from the shells of horseshoe crabs.

- (B) Barnacles most readily attach themselves to horseshoe crabs in areas where tidal currents are weakest.
- (C) The strength of the tidal currents in a given location varies widely over the course of a day.
- (D) A very large barnacle population can significantly decrease the ability of a horseshoe crab to find food.
- (E) Until they are fully grown, horseshoe crabs shed their shells and grow new ones several times a year.

## —样例2

Crowding on Mooreville's subway frequently leads to delays, because it is difficult for passengers to exit from the trains. Subway ridership is projected to increase by 20 percent over the next 10 years. The Mooreville Transit Authority plans to increase the number of daily train trips by only 5 percent over the same period. Officials predict that this increase is sufficient to ensure that the incidence of delays due to crowding does not increase.

Which of the following, if true, provides the strongest grounds for the officials' prediction?

- (A) By changing maintenance schedules, the Transit Authority can achieve the 5 percent increase in train trips without purchasing any new subway cars.
- (B) The Transit Authority also plans a 5 percent increase in the number of bus trips on routes that connect to subways.
- (C) For most commuters who use the subway system, there is no practical alternative public transportation available.
- (D) Most of the projected increase in ridership is expected to occur in off-peak hours when trains are now sparsely used.
- (E) The 5 percent increase in the number of train trips can be achieved without an equal increase in Transit Authority operational costs.

## 2.解释题和加强题的相似之处

- 样例

The Maxilux car company's design for its new luxury model, the Max 100, included a special design for the tires that was intended to complement the model's image. The TOEFL, SAT, IELTS, GRE, GMAT 五大出国考试各科首席讲师齐聚智课网 ([SmartStudy.com](http://SmartStudy.com))

winning bid for supplying these tires was submitted by Rubco. Analysts concluded that the bid would only just cover Rubco's costs on the tires, but Rubco executives claim that winning the bid will actually make a profit for the company.

Which of the following, if true, most strongly justifies the claim made by Rubco's executives?

- (A) In any Maxilux model, the spare tire is exactly the same make and model as the tires that are mounted on the wheels.
- (B) Rubco holds exclusive contracts to supply Maxilux with the tires for a number of other models made by Maxilux.
- (C) The production facilities for the Max 100 and those for the tires to be supplied by Rubco are located very near each other.
- (D) When people who have purchased a carefully designed luxury automobile need to replace a worn part of it, they almost invariably replace it with a part of exactly the same make and type.
- (E) When Maxilux awarded the tire contract to Rubco, the only criterion on which Rubco's bid was clearly ahead of its competitors' bids was price.

### 3. 正确选项与文章focus的相关性

- 样例I

In Washington County, attendance at the movies is just large enough for the cinema operators to make modest profits. The size of the county's population is stable and is not expected to increase much. Yet there are investors ready to double the number of movie screens in the county within five years, and they are predicting solid profits both for themselves and for the established cinema operators.

Which of the following, if true about Washington County, most helps to provide a justification for the investors' prediction?

- (A) Over the next ten years, people in their teenage years, the prime moviegoing age, will be a rapidly growing proportion of the county's population.
- (B) As distinct from the existing cinemas, most of the cinemas being planned would be located in downtown areas, in hopes of stimulating an economic revitalization of those areas.

- (C) Spending on video purchases, as well as spending on video rentals, has been increasing modestly each year for the past ten years.
- (D) The average number of screens per cinema is lower among existing cinemas than it is among cinemas still in the planning stages.
- (E) The sale of snacks and drinks in cinemas accounts for a steadily growing share of most cinema operators' profits.

- 样例2

Hollywood restaurant is replacing some of its standard tables with tall tables and stools. The restaurant already fills every available seat during its operating hours, and the change in seating arrangements will not result in an increase in the restaurant's seating capacity. Nonetheless, the restaurant's management expects revenue to increase as a result of the seating change without any concurrent change in menu, prices, or operating hours.

Which of the following, if true, provides the best reason for the expectation?

- (A) One of the taller tables takes up less floor space than one of the standard tables.
- (B) Diners seated on stools typically do not linger over dinner as long as diners seated at standard tables.
- (C) Since the restaurant will replace only some of its standard tables, it can continue to accommodate customers who do not care for the taller tables.
- (D) Few diners are likely to avoid the restaurant because of the new seating arrangement.
- (E) The standard tables being replaced by tall tables would otherwise have to be replaced with new standard tables at a greater expense.

#### 4. 阅读理解的重要性

- 样例

Which of the following most logically completes the argument?

The computer industry's estimate that it loses millions of dollars when users illegally copy programs without paying for them is greatly exaggerated. Most of the illegal copying is done by people with no serious interest in the programs. Thus, the loss to the industry is quite small, because \_\_\_\_\_.

- (A) many users who illegally copy programs never find any use for them
- (B) most people who illegally copy programs would not purchase them even if purchasing them were the only way to obtain them

- (C) even if the computer industry received all the revenue it claims to be losing, it would still be experiencing financial difficulties
- (D) the total market value of all illegal copies is low in comparison to the total revenue of the computer industry
- (E) the number of programs that are frequently copied illegally is low in comparison to the number of programs available for sale

## 5.非矛盾型解释题

### • 样例1

As a construction material, bamboo is as strong as steel and sturdier than concrete. Moreover, in tropical areas bamboo is a much less expensive construction material than either steel or concrete and is always readily available. In tropical areas, therefore, building with bamboo makes better economic sense than building with steel or concrete, except where land values are high.

Which of the following, if true, most helps to explain the exception noted above?

- (A) Buildings constructed of bamboo are less likely to suffer earthquake damage than are steel and concrete buildings.
- (B) Bamboo is unsuitable as a building material for multistory buildings.
- (C) In order to protect it from being damaged by termites and beetles, bamboo must be soaked, at some expense, in a preservative.
- (D) In some tropical areas, bamboo is used to make the scaffolding that is used during large construction projects.
- (E) Bamboo growing in an area where land values are increasing is often cleared to make way for construction.

### • 样例2

Which of the following most logically completes the argument?

By competing with rodents for seeds, black ants help control rodent populations that pose a public health risk. However, a very aggressive species of black ant, the Loma ant, which has recently invaded a certain region, has a venomous sting that is often fatal to humans. Therefore, the planned introduction into that region of ant flies, which prey on Loma ants, would benefit public health, since \_\_\_\_\_ .

- (A) ant flies do not attack black ants other than Loma ants

- (B) Loma ants are less effective than many bird species in competing with rodents for seeds
- (C) certain other species of black ants are more effective than Loma ants in competing with rodents for seeds
- (D) the sting of Loma ants can also be fatal to rodents
- (E) some pesticides that could be used to control Loma ants are harmful to the environment

## Lecture Ten

### “黑”体作用题：一点都不“黑”！

本节课教学大纲：

- 只管2件事
- 方向的判断
- 作用的归类
- 如何取巧地读文章
- 一条“黑”捷径：较真你就输了

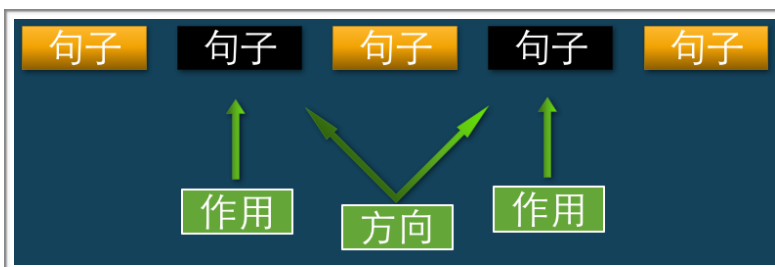
#### 1. 只管2件事

- 样例

Last year a record number of new manufacturing jobs were created. Will this year bring another record? Well, a new manufacturing job is created either within an existing company or by the start-up of a new company. Within existing firms, new jobs have been created this year at well below last year's record pace. At the same time, there is considerable evidence that the number of new companies starting up will be no higher this year than it was last year, and surely the new companies starting up this year will create no more jobs per company than did last year's start-ups. Clearly, it can be concluded that the number of new jobs created this year will fall short of last year's record.

In the argument given, the two portions in boldface play which of the following roles?

(A) The first is a prediction that, if accurate, would provide support for the main conclusion of the argument; the second is that main conclusion.



- boldface
- roles



## 2.方向的判断

- 样例

Since it has become known that several of a bank's top executives have been buying shares in their own bank, the bank's depositors, who had been worried by rumors that the bank faced impending financial collapse, have been greatly relieved. They reason that, since top executives evidently have faith in the bank's financial soundness, those worrisome rumors must be false. Such reasoning might well be overoptimistic, however, since corporate executives have been known to buy shares in their own company in a calculated attempt to dispel negative rumors about the company's health.

(A) The first describes evidence that has been taken as supporting a conclusion; the second gives a reason for questioning that support.

(C) The first provides evidence in support of the main conclusion of the argument; the second states that conclusion.

## 3.作用的归类

- 样例

Hunter: Many people blame hunters alone for the decline in Greenrock National Forest's deer population over the past ten years. Yet clearly, black bears have also played an important role in this decline. In the past ten years, the forest's protected black bear population has risen sharply, and examination of black bears found dead in the forest during the deer hunting season showed that a number of them had recently fed on deer.

In the hunter's argument, the portion in boldface plays which of the following roles?

(A) It is the main conclusion of the argument.

(B) It is a finding that the argument seeks to explain.

(C) It is an explanation that the argument concludes is correct.

(D) It provides evidence in support of the main conclusion of the argument.

(E) It introduces a judgment that the argument opposes.

## 4.如何取巧地读文章

- 样例

Scientists typically do their most creative work before the age of forty. It is commonly thought that this happens because aging by itself brings about a loss of creative capacity. However, studies show that of scientists who produce highly creative work beyond the

age of forty, a disproportionately large number entered their field at an older age than is usual. Since by the age of forty the large majority of scientists have been working in their field for at least fifteen years, the studies' finding strongly suggests that the real reason why scientists over forty rarely produce highly creative work is not that they have aged but rather that scientists over forty have generally spent too long in their field.

#### 5.一条“黑”捷径：较真你就输了

- 样例

In the argument given, the two portions in boldface play which of the following roles?

- (A) The first is a claim, the accuracy of which is at issue in the argument; the second is a conclusion drawn on the basis of that claim.
- (B) The first is an objection that has been raised against a position defended in the argument; the second is that position.
- (C) The first is evidence that has been used to support an explanation that the argument challenges; the second is that explanation.
- (D) The first is evidence that has been used to support an explanation that the argument challenges; the second is a competing explanation that the argument favors.
- (E) The first provides evidence to support an explanation that the argument favors; the second is that explanation.

## 课程体系



### 单项提分课程

五大出国考试各科首席讲师为你系统讲解每个考试单项的命题趋势、备考讲解、答题逻辑与技巧归纳，针对考试单项重点学习。



### 全程提分课程

五大出国考试各科首席讲师为你系统讲解各个考试所有题型的命题趋势、备考讲解、答题逻辑与技巧归纳。全程学习，系统提分。



### 精讲精练提分课程

五大出国考试各科首席讲师与毕业于哈佛、耶鲁、剑桥等世界名校的高分讲师为你共同讲授“精品课程”与各大考试热门教材与题库“逐题精讲”。依据中国学生目标分数与专家多年教学经验，科学设计课程。精讲精练，透彻学习，高效提分。

## 课程体系



### 直通车

从学员留学申请目标出发，系统设计“美国本科直通车”、“美国研究生/商科直通车”，全面讲解各大考试所有题型的命题趋势、备考讲解、答题逻辑与技巧归纳。一站式学习，系统备考，直达名校。



### 考霸课程

为你打造高中生与大学生留学申请无忧课程组合，让你赢得更优成绩，拥有更多选择。融合智能学习管理与极致课程体验，让你不仅高效提分，更让你享受整个学习过程。



### 学习年卡

为您提供最顶级、最超值的一站式出国考试学习方案。成为智课网年卡会员，随时随地任意学习五大出国考试各科首席讲师课程与所有热门教材逐题精讲，学习、练习、讲解三位一体，高分、名校一举锁定。

高中生北美留学课程VIP学习年卡

大学生及职场人士北美留学课程VIP学习年卡

大学生及职场人士商科留学课程VIP学习年卡

英联邦留学课程VIP学习年卡

## 产品特点



### 在线课堂

SmartStudy集结最顶尖的师资，最科学的知识切片和庞大的逐题精讲内容研发库，让你体验“品质远远高于线下”但是“价格远远低于线下”的线上学习模式。



### 顶级名师团队

TOEFL IELTS SAT GRE GMAT，五大出国考试中国最顶尖的各科首席讲师齐聚SmartStudy，权威大佬们如此聚集，史上空前。



### 影视级课程大片

电影级别的拍摄手段，所有精品课堂配备同步字幕，为学习者提供比现场更加真实的“大片级”的视频课程体验，让你在视觉享受中体验学习的愉悦和效率。



### 智能学习过程管理

超级强大智能学习管理中心给你提供科学智能的个性化学习方案和备考计划推送，SmartStudy认为，要想保障你的学习结果，必须引导你的学习过程和学习习惯。



### 基于知识点的系统课程

5大出国考试各科顶尖权威，32门超级系统课程，500小时生动的“纯干货”精品课程，覆盖5大出国留学考试2620个知识点与考点，看了才知道多震撼！



### 逐题精讲

最顶级国外考试教学专家，哈佛，耶鲁，哥大的老师，满分考试得主为你逐题精讲，所有热门教材及海量题库逐题分析。学习，练习，讲解三位一体。

## 课程理念

### 智能学习过程管理 科技释放学习力

SmartStudy 融入了非常先进的数据挖掘模型和算法, 融合权威专家多年教学经验, 以及庞大的学员用户行为数据, 为每位学员打造一个学习管理中心。

SmartStudy 学习管理中心, 根据学生学习目标对学习行为进行搜索与定位, 计算出学生的备考 SWOT 分析, 精细诊断“输入-输出”过程中疏漏、薄弱环节点, 结合专家评估自动给用户匹配非常精准合适的专家课程与逐题精讲, 挖掘学员每一分潜力。为学员提供真正“个性化”、“结果导向”的学习解决方案。



### 3-3-4 系统学习模型 学习练习讲解三位一体

SmartStudy 独创的“3-3-4 系统学习模型”, 倡导 3 分学, 3 分练, 4 分管, 全面涵盖“学习、练习和教学管理服务”三大环节。在 SmartStudy 专家课程学习各大考试备考策略与与解题方法, 在 SmartStudy 逐题精讲学习热门考试教材的每道题目, 并聆听权威专家的详细讲解, 在 SmartPigai 进行实战练习, 并享受权威专家与外教的专业批改。

SmartStudy 为所有学员提供一站式学习、练习与教学管理服务, 为学员打造现代化的“学习私塾”。



### 四轮解题 全面提升独立解题能力

SmartStudy 逐题精讲融合经典学习理论“四轮学习法”, 完全符合心理学的认识过程“感知、理解、巩固、应用”四大阶段。并通过人性化的产品设计为学员提供“循序渐进, 由表及里, 透过现象抓住本质”的“四轮解题方法”。从题目解析, 到考点剖析, 到知识点衍生, 最后到举一反三, 既提高分数, 又提升能力。



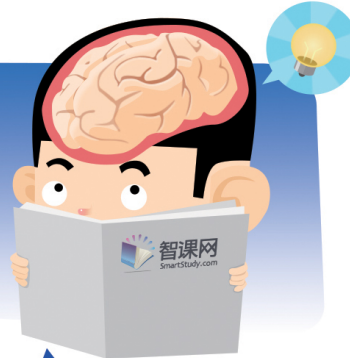


## 课程理念

## 以学论教 攻破学习难点

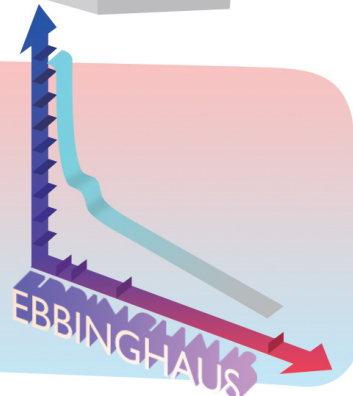
美国教育心理学家加里认为，学生的“学”才是获得学习结果的內因，教师的“教”只是外因。传统教学，以教为基础，先教后学，更加注重方法论的传授。教师教多少，学生就学多少。教师无法为每个学生解答每个题目。造成“学”无条件地服从“教”，“教学”由共同体变成了单一体，学生的自主性、独创性缺失，主体性被压抑。学生学习中的难点没有被个性化的解决，形成了学习的断点。

SmartStudy 逐题精讲教学设计核心思想之一就是“以学论教”，逐题精讲涵盖所有热门教材与题库的题目，学生自主选择学习练习中的难点要点，让学习者成为学习活动的真正主人，改变了以往外在性、被动性、依赖性的学习状态，充分激发学生的学习积极性与潜能。



## 遵循艾宾浩斯遗忘曲线 符合记忆规律

SmartStudy 课程遵循艾宾浩斯遗忘曲线，通过系统化知识点切片实现遗忘跟踪，课前预习与课后重点回顾，自动记录知识点卡壳频率，提示难点重温，帮助学员不放过一个可能遗忘的知识点，充分实现考试能力的內化。在 SmartStudy，你可以根据知识切片自由学习重点难点，直到完全掌握。



## 结果导向式 提分才是硬道理

目标解构：一方面，逆向备考、目标分解，把相应的考试分数对应上匹配的任务，层层分布到核心技巧的训练，另一方面权威专家进行核心技巧归纳，模块要点化，整理出备考最需要的考点内容，提高复习的精准度。

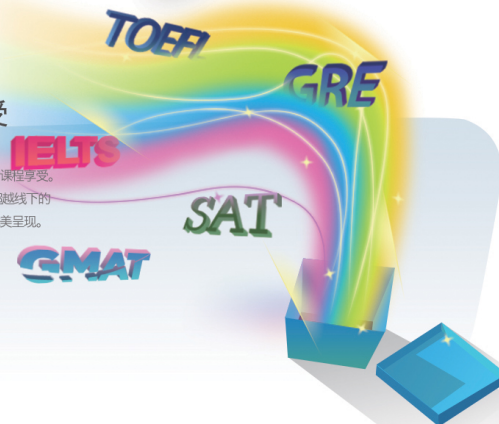
过程控制：先进的视频触点控制，让课程学习中随时停下记录薄弱环节，随时向名师提问，在过程中实现痛点直击，复习不留死角，每分必争。

批改矫正：在权威讲解和有素训练之后，SmartStudy 另增加专业透彻的批改环节，严格依据官方评分标准，全面诊断考生学习效果，查漏补缺，告别自我良好的幻觉，切实清醒，提高分数才是王道。



## 极致课程品质 让学习成为享受

打开 SmartStudy，你收获的不仅是顶级专家的知识，更是极致的课程享受。影视级课程品质，专业的学习控制中心，中英文字幕，让你享受超越线下的学习体验。学习本该就是一个很享受的过程，SmartStudy 为您完美呈现。





## 我们的使命



### 科技进化教育

互联网正掀起教育变革浪潮，在线教育与在线学习成为未来趋势，智课网致力于通过科技的力量进化传统教育。

### 解放学生

在线学习需要提供真正高品质的内容研发和极客般的线上学习体验，通过高质量和友好用户体验的在线课程与同步课程，普及优质教育资源，解放学生，实现教育均贫富。

### 解放老师

通过互联网的力量，让老师从“体力劳动者”回归成为“教研工作者”，构建权威老师和平台之间的“合作共赢”关系，解放老师。

学习专线: 400-011-9191

客户服务: [service@smartstudy.com](mailto:service@smartstudy.com)

商务合作: [bd@smartstudy.com](mailto:bd@smartstudy.com)

新浪微博: @SmartStudy

人人主页: @SmartStudy



SmartStudy微信



从今天起，学习进入SmartStudy时代!