

SAT考试和课程简介

张斯乐



自我介绍

张斯乐

新东方在线美本美研项目教学主管

持有TKT证书, CELTA证书, 教师资格证

8年留学考试教学规划经验, 近万小时教学时间

教授学生5000余人

主讲SAT文法和数学

WHAT? WHY? HOW?



◆WHAT? WHY? HOW?

关于SAT



◆ WHAT? WHY? HOW?

How Does the SAT® Measure Academic Achievement?

Questions on the SAT will not ask you to recall details of *Hamlet* or to name the capital of Nevada or the location of the Rappahannock River. If you recall those facts, good for you, but the SAT will ask for something different. Instead of asking you to show what you've memorized, the questions invite you to exercise your thinking skills.

All of the learning you've done — from childhood to now — contributes to how you think, how your mind manages information. Even if you don't recall the details of a history or science lesson, the process of learning information and blending it with previously learned information is key to becoming a skilled thinker.

◆ WHAT? WHY? HOW?

How Is the SAT Organized?

The SAT has four tests, with the Essay being optional. The three tests that everyone will take are (1) the Reading Test, (2) the Writing and Language Test, and (3) the Math Test. The timing and number of questions are as follows:

Component	Time Allotted (minutes)	Number of Questions/Tasks
Reading	65	52
Writing and Language	35	44
Math	80	58
Essay (optional)	50	1
Total	180 (230 with Essay)	154 (155 with Essay)

◆ WHAT? WHY? HOW?

The Essay is optional, but some high schools and colleges require it. Depending on your high school and your college choices, you may already know whether or not you'll take the Essay. If you have any uncertainty — for instance, if you can imagine that you might transfer from a school that doesn't require it to one that does — consider taking the SAT with Essay.

◆ WHAT? WHY? HOW?

How Is the SAT Scored?

When you take the SAT, you don't get just one score. The SAT reports a total score, but there are also section scores, test scores, cross-test scores, and subscores. This wide array of scores provides insight into your achievement and your readiness for college and career.

You earn points on the SAT by answering questions correctly. No points are deducted for wrong answers, so go ahead and give your best answer to every question — there's no advantage to leaving any blank.

◆ WHAT? WHY? HOW?

Total Score and Section Scores

The total score is the number most commonly associated with the SAT. The total score ranges from 400 to 1600. This score is the sum of the scores on the Evidence-Based Reading and Writing section (which includes the Reading and Writing and Language Tests) and the Math section. Of the 154 questions in the entire SAT (not counting the Essay), 96 questions are on the Reading and the Writing and Language Tests and 58 questions are on the Math Test.

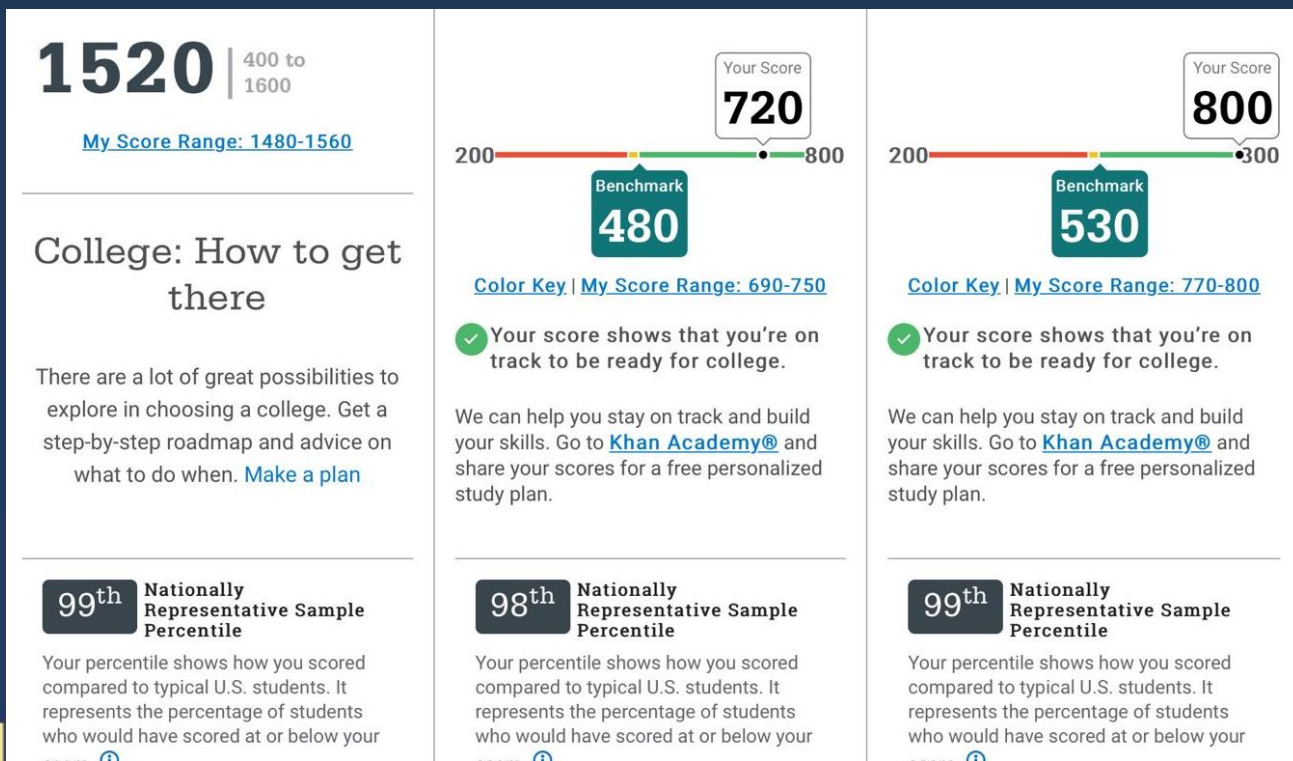
Section scores for Evidence-Based Reading and Writing and for Math are reported on a scale from 200 to 800. The Evidence-Based Reading and Writing section score is derived in equal measure from the scores on the Reading and the Writing and Language Tests. The Math section score is derived from the score on the Math Test.

◆WHAT? WHY? HOW?

关于成绩报告



WHAT? WHY? HOW?

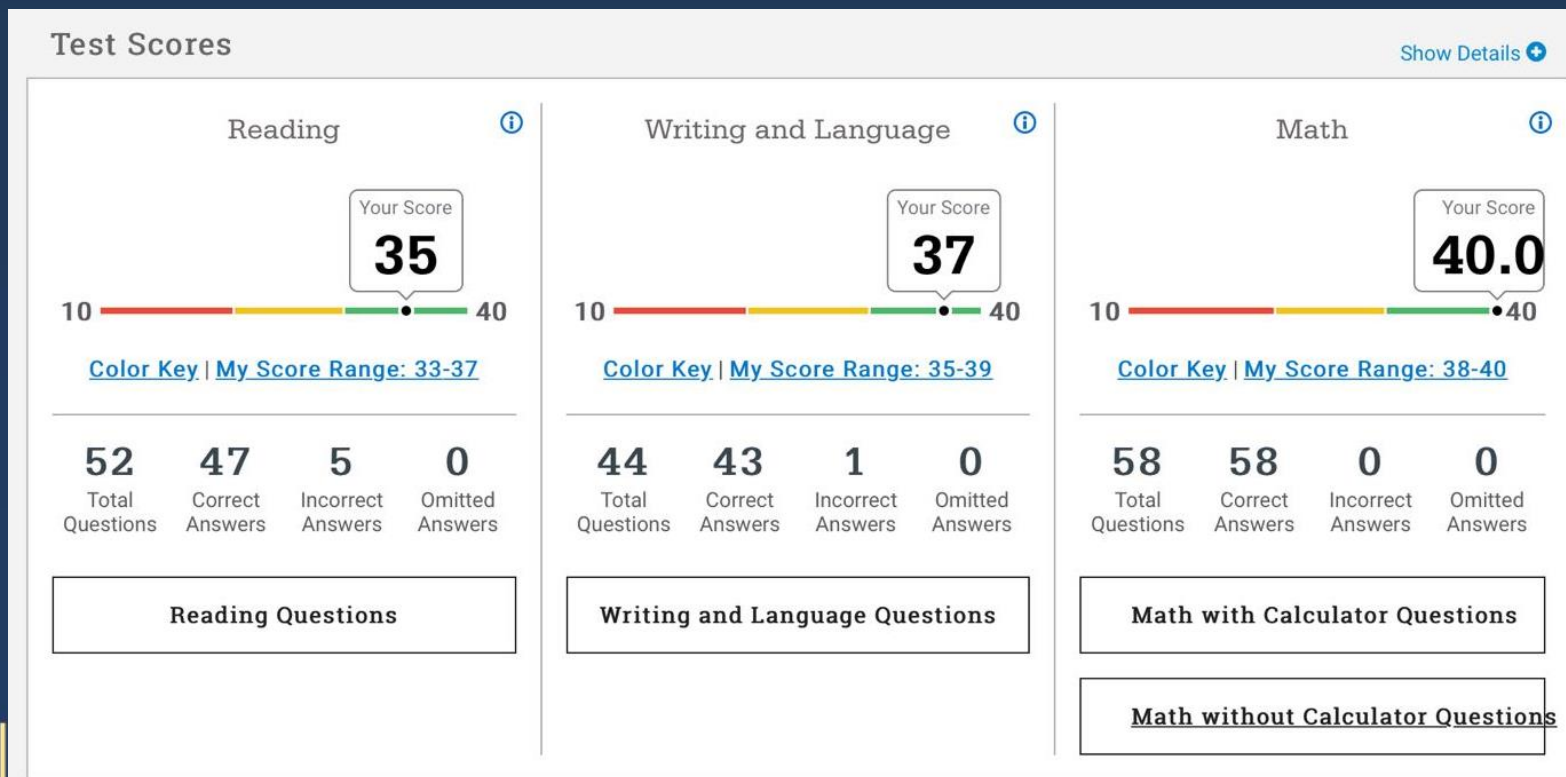


◆WHAT? WHY? HOW?

Test Scores

Test scores are reported on a scale of 10 to 40 for each of the three required tests: Reading, Writing and Language, and Math.

WHAT? WHY? HOW?

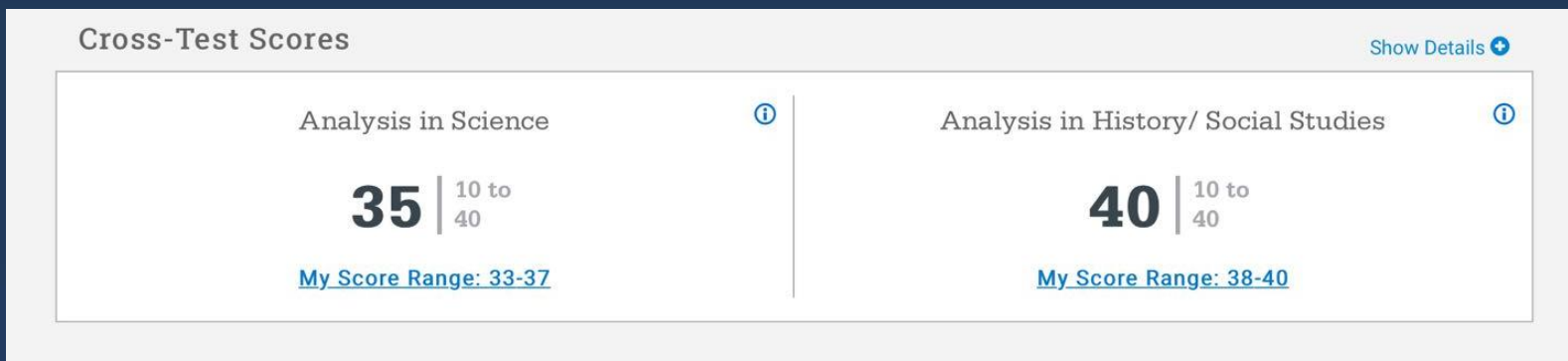


◆WHAT? WHY? HOW?

Cross-Test Scores

Cross-test scores — one for **Analysis in History/Social Studies** and one for **Analysis in Science** — are reported on a scale of 10 to 40 and are based on selected questions in the Reading, Writing and Language, and Math Tests that reflect the application of reading, writing, language, and math skills in history/social studies and science contexts.

WHAT? WHY? HOW?



◆ WHAT? WHY? HOW?

Subscores

Subscores are reported on a scale of 1 to 15. They provide more detailed information about how you're doing in specific areas of literacy and math.

Two subscores are reported for Writing and Language: Expression of Ideas and Standard English Conventions.

The **Expression of Ideas** subscore is based on questions focusing on topic development, organization, and rhetorically effective use of language.

The **Standard English Conventions** subscore is based on questions focusing on sentence structure, usage, and punctuation.

◆ WHAT? WHY? HOW?

The Math Test reports three subscores: Heart of Algebra, Problem Solving and Data Analysis, and Passport to Advanced Math.

Heart of Algebra focuses on linear equations, systems of linear equations, and functions.

Problem Solving and Data Analysis focuses on quantitative reasoning, the interpretation and synthesis of data, and problem solving in rich and varied contexts.

Passport to Advanced Math focuses on topics important for progressing to more advanced mathematics, such as understanding the structure of expressions, reasoning with more complex equations, and interpreting and building functions.

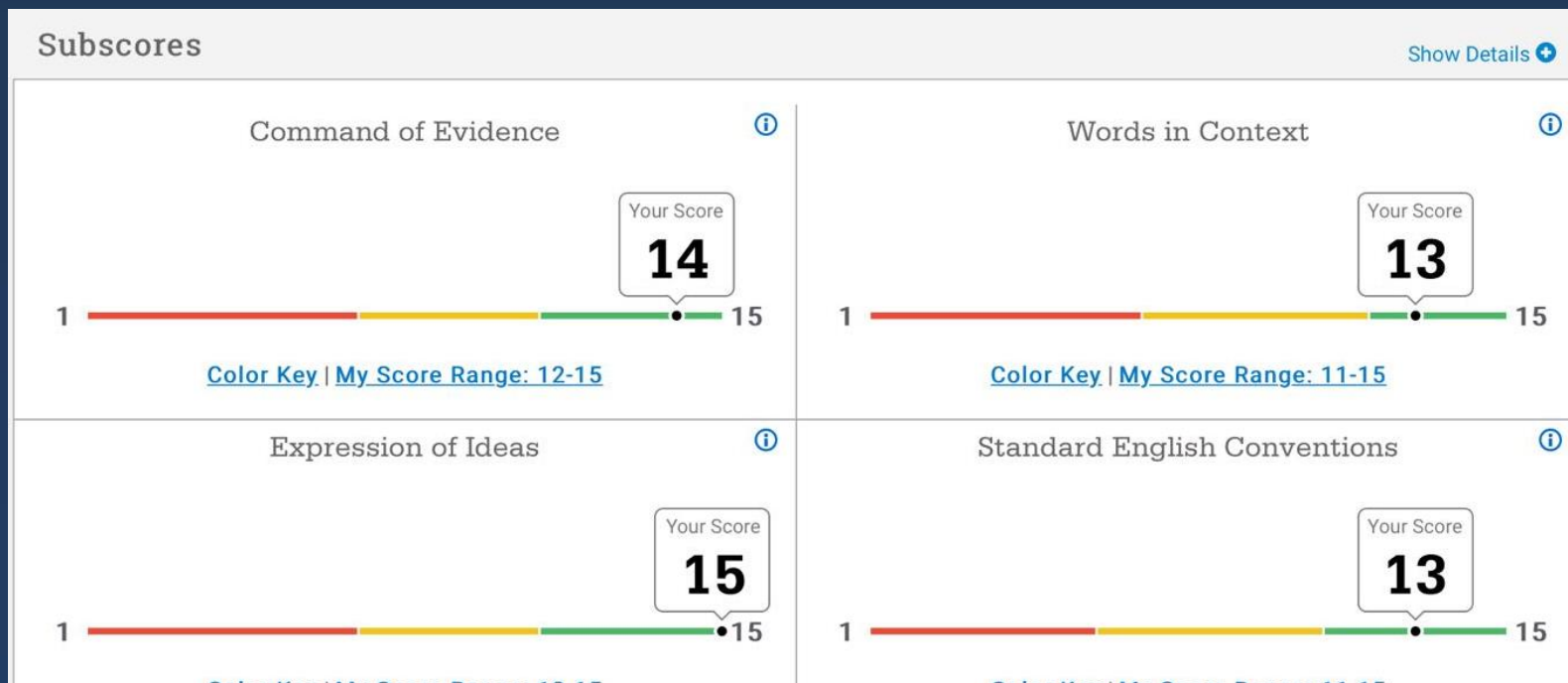
◆ WHAT? WHY? HOW?

The final two subscores — Words in Context and Command of Evidence — are based on questions in both the Reading and the Writing and Language Tests.

Words in Context questions address word and phrase meanings in context as well as rhetorical word choice.

Command of Evidence questions ask you to interpret and use evidence found in a wide range of passages and informational graphics, such as graphs, tables, and charts.

WHAT? WHY? HOW?



◆ WHAT? WHY? HOW?

Essay Scores

The scores for the optional SAT Essay are reported separately and aren't factored into any other scores. The Essay yields three scores, one each on three dimensions:

Reading: How well you demonstrate your understanding of the included passage

Analysis: How well you analyze the passage and carry out the task of explaining how the author of the passage builds an argument to persuade an audience

Writing: How skillfully you craft your response

Two raters read each response and assign a score of 1 to 4 to each of the three dimensions. The two raters' scores are combined to yield Reading, Analysis, and Writing scores, each on a scale of 2 to 8.

WHAT? WHY? HOW?

Essay Scores		
Essay - Reading ⓘ	Essay - Analysis ⓘ	Essay - Writing ⓘ
6 2 to 8	5 2 to 8	8 2 to 8
Essay Details		

◆WHAT? WHY? HOW?

强烈建议



◆ WHAT? WHY? HOW?

Student Answer Verification Services

The SAT Program offers two answer verification services for the SAT. These services are intended to help you feel confident that your test was scored accurately by providing information about the questions and how you answered them. Depending on when and where you take the SAT, you can order either the Student Answer Service (SAS) or the Question-and-Answer Service (QAS). You can order the services when you register for the SAT or up to five months after your test date.

Both SAS and QAS tell you which questions you answered correctly, which ones you didn't answer correctly, and which ones you didn't answer. You'll also see information about the type and difficulty of questions. QAS provides additional information, including the test questions themselves. The Essay prompt is only released as part of the Question-and-Answer Service.

WHAT? WHY? HOW?

SAT Student Answer Service*	This service provides a list of question types from the specified test you took; whether you answered the question correctly or incorrectly, or omitted the answer; and the level of difficulty.	\$13.50 Fee waiver available
Multiple-choice hand score verification	When hand scoring of a multiple-choice score is requested, your entire answer sheet will be manually reviewed—you can't request verification of scores for a single section on the SAT or just one of several SAT Subject Tests taken on the same date. For SAT only: If you order hand score verification, you will no longer see the full online score report, and you won't have access to the Student Answer Service or Question-and-Answer Service for your hand scored answer sheet.	\$55 Fee reduction available

WHAT? WHY? HOW?

Student Score Reports				
		Dashboard My Score Reports		
Question	Correct Answer	Your Answer	Difficulty	
^			⬆	
1	D	✓	■■■	N/A
2	B	A	■■□	N/A
3	C	B	■■□	Words in Context
4	B	✓	■■□	N/A
5	C	✓	■■■	N/A

◆WHAT? WHY? HOW?



◀ WHAT? WHY? HOW?



◆ WHAT? WHY? HOW?

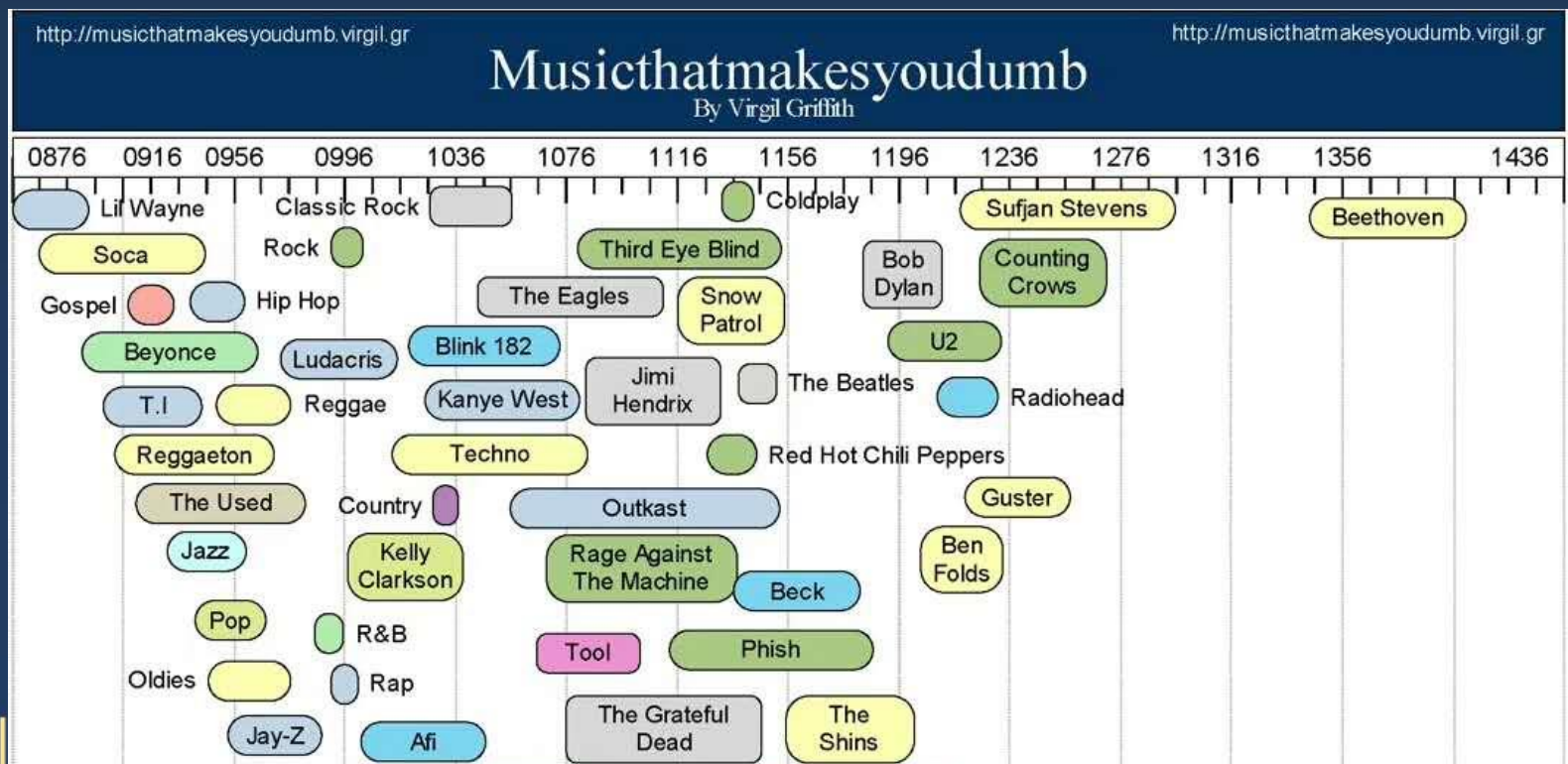
先看数据



WHAT? WHY? HOW?

Total	Test Takers		Mean Score		
	Number	Percent	Total	ERW	Math
Total	2,136,539		1068	536	531
Took Essay ¹	1,449,142	68%	1096	549	546

11



WHAT? WHY? HOW?

Race / Ethnicity	Test Takers		Mean Score		
	Number	Percent	Total	ERW	Math
American Indian/Alaska Native	10,946	1%	949	480	469
Asian	217,971	10%	1223	588	635
Black/African American	263,318	12%	946	483	463
Hispanic/Latino	499,442	23%	990	501	489
Native Hawaiian/Other Pacific Islander	5,620	0%	986	498	489
White	930,825	44%	1123	566	557
Two or More Races	77,078	4%	1101	558	543
No Response	131,339	6%	954	472	481

WHAT? WHY? HOW?

First Language Learned	Test Takers		Total	Mean Score	
	Number	Percent		ERW	Math
English Only	1,359,663	64%	1083	548	535
English and Another Language	414,790	19%	1056	526	530
Another Language	246,921	12%	1069	521	547
No Response	115,165	5%	930	463	467

WHAT? WHY? HOW?

Total and Section Scores

Total Score			ERW			Math		
1400–1600	145,023	<div><div></div></div> 7%	700–800	140,614	<div><div></div></div> 7%	202,088	<div><div></div></div> 9%	
1200–1390	434,200	<div><div></div></div> 20%	600–690	495,747	<div><div></div></div> 23%	371,188	<div><div></div></div> 17%	
1000–1190	741,452	<div><div></div></div> 35%	500–590	719,988	<div><div></div></div> 34%	739,109	<div><div></div></div> 35%	
800–990	619,145	<div><div></div></div> 29%	400–490	601,691	<div><div></div></div> 28%	570,292	<div><div></div></div> 27%	
600–790	192,267	<div><div></div></div> 9%	300–390	170,178	<div><div></div></div> 8%	239,597	<div><div></div></div> 11%	
400–590	4,452		200–290	8,321		14,265		

100

WHAT? WHY? HOW?

	Total Students	Female	Male	American Indian	Asian	African American	Hispanic	Native Hawaiian	White
Test Takers	2,136,539	1,117,329	1,018,459	10,946	217,971	263,318	499,442	5,620	930,825
Section (Test) Scores - Math¹									
700–800 (35–40)	9%	7%	12%	2%	36%	1%	3%	3%	10%
600–690 (30–34.5)	17%	16%	19%	8%	26%	7%	10%	10%	23%
500–590 (25–29.5)	35%	36%	33%	29%	25%	27%	33%	34%	41%
400–490 (20–24.5)	27%	29%	24%	37%	10%	40%	36%	36%	21%
300–390 (15–19.5)	11%	12%	11%	23%	3%	23%	17%	17%	5%
200–290 (10–14.5)	1%	1%	1%	2%	0%	1%	1%	1%	0%

WHAT? WHY? HOW?

	Total Students	Female	Male	American Indian	Asian	African American	Hispanic	Native Hawaiian	White
Test Takers	2,136,539	1,117,329	1,018,459	10,946	217,971	263,318	499,442	5,620	930,825
Test Scores - Reading									
35-40	8%	7%	8%	2%	16%	2%	3%	3%	11%
30-34	25%	25%	25%	13%	33%	12%	17%	15%	32%
25-29	34%	36%	33%	31%	32%	33%	35%	35%	36%
20-24	26%	26%	25%	38%	16%	40%	34%	36%	17%
15-19	7%	6%	8%	15%	3%	13%	10%	10%	3%
10-14	0%	0%	1%	1%	0%	1%	1%	1%	0%

WHAT? WHY? HOW?

	Total Students	Female	Male	American Indian	Asian	African American	Hispanic	Native Hawaiian	White
Test Takers	2,136,539	1,117,329	1,018,459	10,946	217,971	263,318	499,442	5,620	930,825
Test Scores - Writing and Language									
35–40	8%	9%	8%	2%	21%	2%	3%	3%	11%
30–34	23%	24%	22%	11%	33%	11%	14%	14%	30%
25–29	32%	32%	31%	27%	27%	29%	31%	33%	33%
20–24	27%	27%	28%	40%	15%	41%	37%	38%	20%
15–19	9%	8%	10%	20%	4%	17%	13%	13%	4%
10–14	1%	1%	1%	1%	0%	1%	1%	1%	0%

◆ WHAT? WHY? HOW?

目标1500，数学全对的情况下，获得难度

1905北美，阅读错5，文法错5或阅读错7，文法错4；

1905亚太，阅读错5，文法错1或阅读错4，文法错2；

1903北美，阅读错5，文法错5或阅读错8，文法错3；

1903亚太，阅读错5，文法错3或阅读错6，文法错2；

◀ WHAT? WHY? HOW?



◀ WHAT? WHY? HOW?



◆WHAT? WHY? HOW?

课程目标 (2-3次考试)

托福100-SAT1500

托福90-SAT1400

托福80-SAT1300



◆WHAT? WHY? HOW?

课程目标（2-3次考试）

路径1：申请前一年8/10月首考，12月二战，3月最后冲刺

路径2：申请前一年12月首考，3月二战，8月最后冲刺

路径3：申请当年3月首考，5月二战，8月最后冲刺

◆WHAT? WHY? HOW?

课程目标（2-3次考试）

路径1：申请前一年8/10月首考，12月二战，3月最后冲刺

*申请年第一场考试出分，对大学申请有利，且留充足时间给AP，SAT2和暑假活动

◆WHAT? WHY? HOW?

课程目标（2-3次考试）

路径2：申请前一年12月首考，3月二战，8月最后冲刺

*申请年第一场考试接近目标，5月考AP，8月冲分，10月保底

◆WHAT? WHY? HOW?

课程目标 (2-3次考试)

路径3: 申请当年3月首考, 5月二战, 8月最后冲刺

*准备时间较晚, 不建议申请年考AP, 主要保证SAT分数, 10月还有一场保底考试

◆WHAT? WHY? HOW?

学习资料

讲义

官方指南

乐词APP (背单词)



◆WHAT? WHY? HOW?

课程阶段

第一阶段，考试题型和涉及基础知识点串讲

第二阶段，官方指南样题精讲

*每个月有模考和直播精讲，用于检测学习成果

***强烈建议**至少听完所有科目知识点串讲再参加模考

◆WHAT? WHY? HOW?

学习路径

先判断数学和满分之间的差距（测试）

开始学习阅读，文法

文法知识点牢固掌握后，开始阅读，文法，写作同步学习

◆WHAT? WHY? HOW?

时间安排

1. 集中时间学习

寒暑假集中学习60天，每天6-8小时，听课+练习+积累文史阅读

2. 非集中时间学习

练习+积累时间：听课时间
至少应为2：1

◆WHAT? WHY? HOW?

关于一对一备考规划（旗舰班）

根据你目前的基础和目标，老师给你定制专属学习方案

◆WHAT? WHY? HOW?

关于一对一课程（旗舰班）

一对一讲解你在课程中遇到的任何问题，随时预约，随时解答

◆WHAT? WHY? HOW?

关于模考精讲（旗舰班）

贴近最新考试趋势，每月一次检测学习效果的机会，及时发现问题，解决问题

Thanks

新东方旗下官方网络课堂



koolearn